

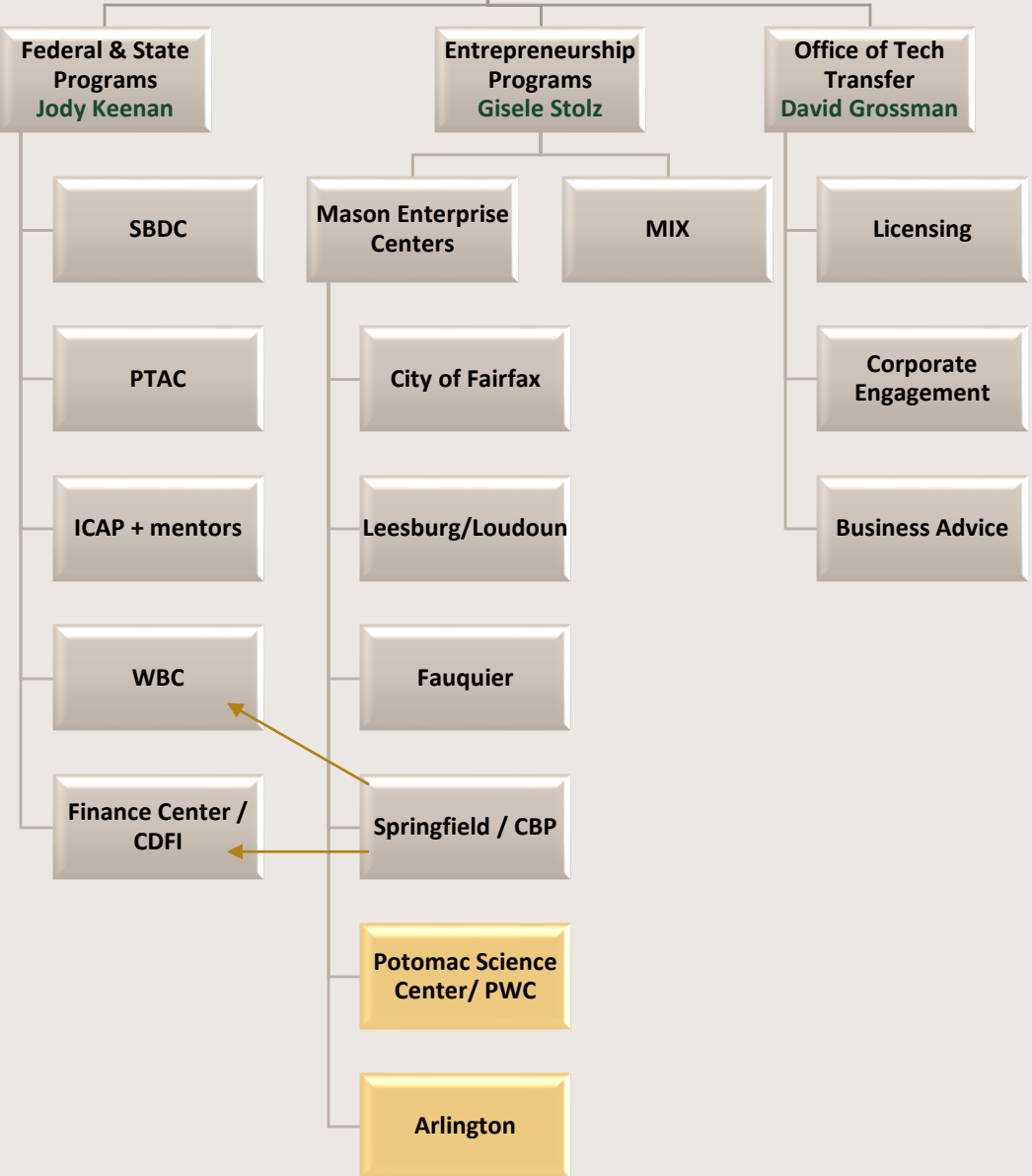
Fairfax County 11-16-21



**Mason
Enterprise**



Mason Enterprise
Paula Sorrell



FY 2020 IMPACT

10,000 small businesses

45% minority, 32% women, 12% veterans

863 Programs, 18K attendees

\$2 Billion Impact

Mission

- Create a high functioning, inclusive ecosystem for entrepreneurs where Mason plays a leading role as a connector and operator. Through this work we leverage the university's assets to deliver knowledge-based interventions that increase our value to the university, the commonwealth, and our public and private partners.



Researcher Support

Activities Outside of Researcher training

Invention Disclosure • Market Exploration • Team Building • Prototype Testing • Business Model Development • Finance Development

ACTIVITIES
CURRENT FUNDING
GAPS

Federal Research – Basic \$

Federal Research – Applied \$

Licensing & Spinouts \$

Industry Research \$

Consistent Business Mentorship

Proof of Concept Funding

IP Protection

Market Ready Product

Customer Introductions

Funding Sourcing

Manufacturing Scale-Up

De-Risk Technology and Increase Survival Rate

Necessary activities that require funding

2021 Critical Activities

Increase Office of Tech Transfer	←
Launch MIX 3.0	←
Inaugural Accelerate 2022	←
Complete Innovation District Roadmap	←
Launch SBDC/ICAP Tech Mentor Team	←
Launch Arlington Accelerator	←

2022 Critical Activities

- President Washington's Virginia Promise
- Innovation District / Corridor Planning & Execution
- Regional Entrepreneurship Convening
- Expansion of Accelerate Investor Event
- Coulter Model Translational Research
- First Customer Program