

FIRE MARSHAL INFORMATION

FIRE LANE SIGNS:

SIGN TYPE "A"	SIGN TYPE "C"	SIGN TYPE "D"
STANDARD WORDING WITH AN ARROW AT BOTTOM POINTING TO THE RIGHT. ONE SIGN MOUNTED PARALLEL TO THE LINE OF CURBING OR PAVEMENT EDGE AT END OF PAINTED AREA.	STANDARD WORDING WITH AN ARROW AT BOTTOM POINTING TO THE LEFT. ONE SIGN MOUNTED PARALLEL TO THE LINE OF CURBING OR PAVEMENT EDGE AT END OF PAINTED AREA.	STANDARD WORDING WITH NO ARROW. TWO SIGNS, BACK TO BACK, MOUNTED PERPENDICULAR TO LINE OF CURBING OR PAVEMENT EDGE.
■ "A" DENOTES SIGN TYPE "A"	■ "C" DENOTES SIGN TYPE "C"	■ "D" DENOTES SIGN TYPE "D"

FIRE LANE NOTE:

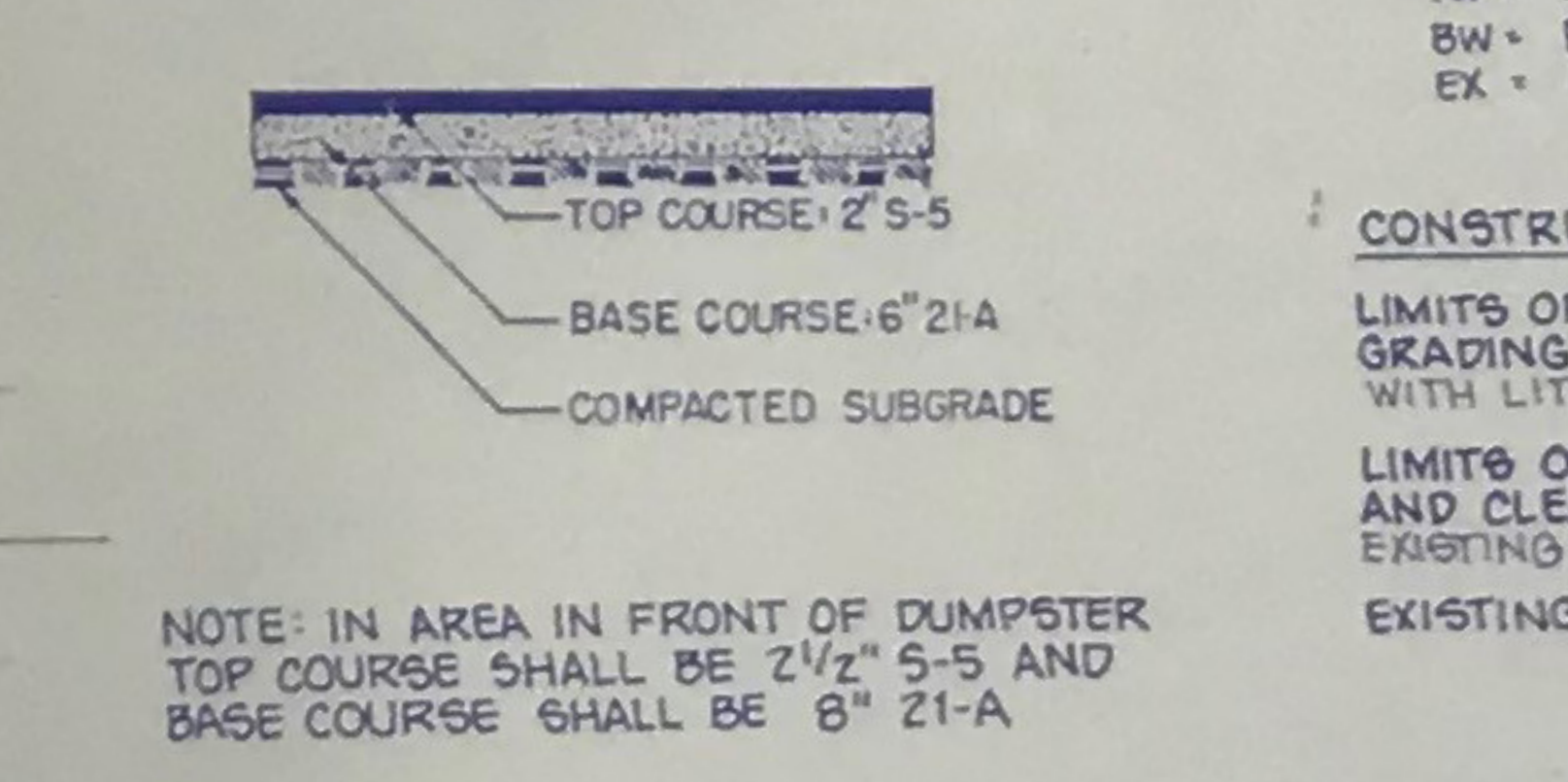
***** DENOTES A FIRE LANE
 Fire Marshal Field Inspection Necessary For Final Approval Of Fire Lanes. Fire Lanes Must Have Final Approval Prior To Request For Occupancy.

Owner Shall Notify Fire Prevention Division.
 Fire Lane Section, 4084 University Drive,
 Suite 101, Fairfax, Virginia 22030 When
 Fire Lanes Have Been Installed.

FIRE PREVENTION NOTES

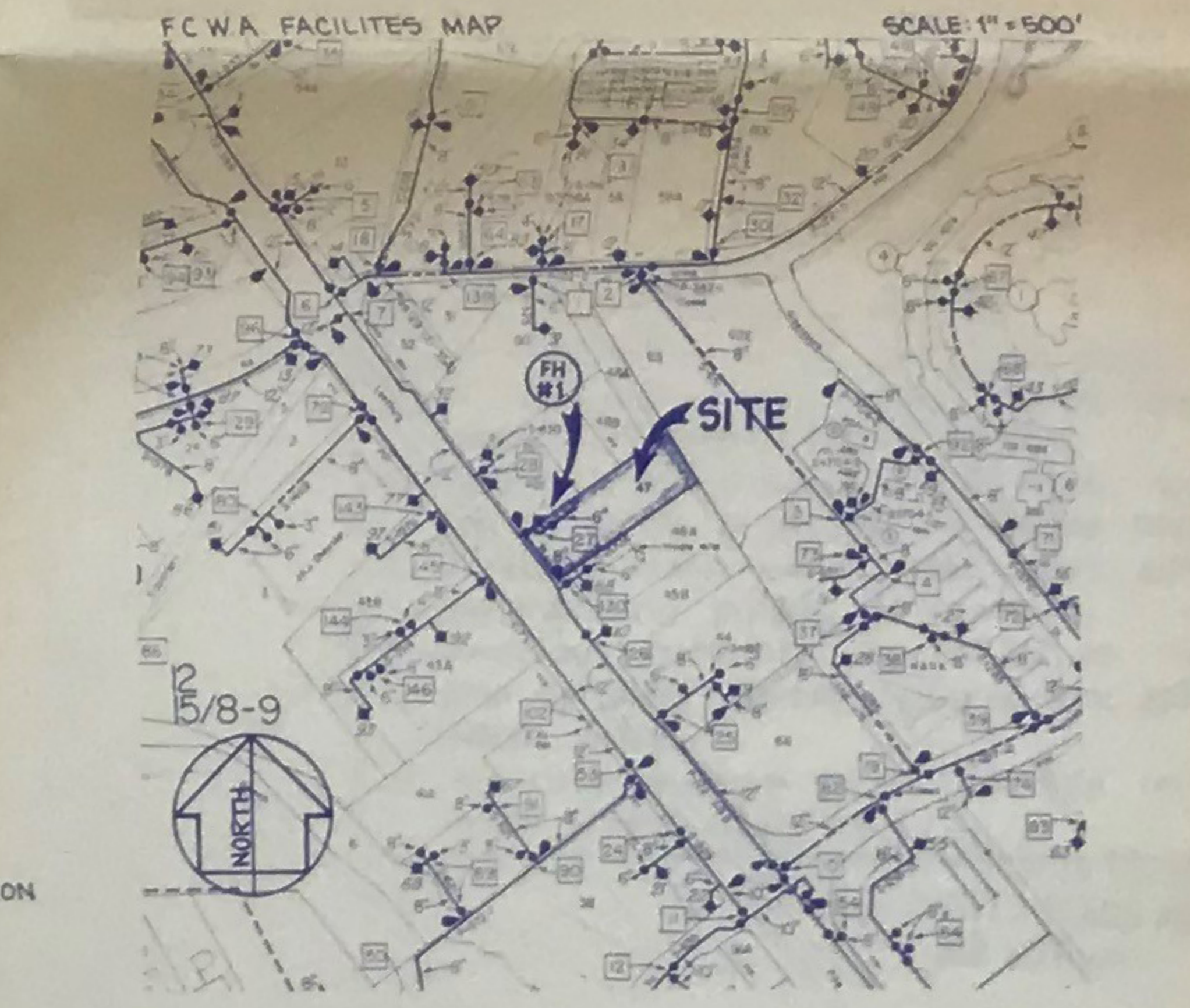
- TYPE OF CONSTRUCTION: SEE COVER SHEET
- USE GROUP: SEE COVER SHEET
- NUMBER OF STORIES: 1
- BUILDING HEIGHT: SEE COVER SHEET
- FOOT PRINT AREA: 19,260 SQ FT
- GROSS FLOOR AREA: SEE COVER SHEET
- FIRE WALLS WILL BE PROVIDED AS SHOWN ON THE ARCHITECTS PLANS
- BUILDING IS SPRINKLERED
- FLOW DATA: TH 29-3-FW1
 - TEST DATE: MARCH, 1990
 - STATIC = 47 PSI
 - RESIDUAL = 41 PSI
 - FLOW = 1075 GPM @ 20'
 - Q 20 = 2420 GPM AVAILABLE
 - Q 20 = 1725 GPM REQUIRED
- FIRE LANE SIGNS SHALL BE OF METAL CONSTRUCTION, 12" x 18", WITH RED LETTERS ON WHITE BACKGROUND WITH 3/8" RED TRIM STRIP AROUND ENTIRE OUTER EDGE OF SIGN. LETTERING SIZE TO BE AS FOLLOWS: "NO PARKING" AND "STANDING" - 2 INCHES, "OR" - 1 INCH, "FIRE LANE" - 2 1/2 INCH, APPROX 1 INCH x 4 INCH SOLID SHAFT WITH A SOLID HEAD 1 1/2 INCHES WIDE AND 2 INCHES DEEP. SIGNS ARE TO BE MOUNTED 7 FEET FROM THE ROUND TO THE BOTTOM OF THE SIGN UNLESS OTHERWISE DIRECTED BY THE FAIRFAX COUNTY FIRE PREVENTION DIVISION, FIRE LANES SECTION.
- ROSTERS FOR SIGNS SHALL BE METAL AND SECURELY MOUNTED.
- ALL CURBS OR PAVED SPACES DESIGNATED AS FIRE LANES SHALL BE INDICATED BY YELLOW PAINT AS APPROVED BY THE FIRE PREVENTION DIVISION. IN AREAS WITHOUT CURBING, A 6" WIDE YELLOW STRIPE SHOULD BE APPLIED TO THE EDGE OF THE PAVEMENT. PAINT SHALL BE HIGHWAY TRAFFIC GRADE.
- THE ENTRANCE TO THE SITE AT STATION 10 + 00 SHALL BE IDENTIFIED AS A FIRE LANE ENTRANCE WHICH SHALL BE MAINTAINED CLEAR AND ACCESSIBLE ALL YEAR.

TYPICAL SECTION ONSITE PAVING (NO SCALE)



GENERAL NOTES

- OWNER: TYSONS PROMENADE LIMITED PARTNERSHIP, 676 WEIRSELAS & SONS, INC., 1430 SPRINGHILL ROAD, SUITE 200, McLEANS, VA 22104
- RECORDED AT: 08 7565 PG 1274
- TAX MAP: 29-3-111-47
- THIS SITE IS AN EXISTING SITE ON WHICH THE EXISTING BUILDING WILL REMAIN, THE USE REVISED, AND THE PARKING LOT EXPANDED.
- SOLID WASTE WILL BE STORED IN A CENTRAL CONTAINER AND COLLECTED AT LEAST ONCE A WEEK, AND DISPOSED OF AT A COUNTY APPROVED SITE.
- BOUNDARY AND TOPOGRAPHIC SURVEYS WERE COMPILED BY RUNYON, DUDLEY, ANDERSON, ASSOCIATES, CONTOUR INTERVAL = 2 FEET.
- THE EXISTING UNDERGROUND UTILITIES SHOWN HEREON ARE BASED UPON AVAILABLE INFORMATION. THE CONTRACTOR SHALL BE RESPONSIBLE FOR DETERMINING THE EXACT LOCATION OF ALL UTILITIES BEFORE COMMENCING WORK AND FOR ANY DAMAGES WHICH OCCUR BY HIS FAILURE TO LOCATE OR PRESERVE THESE UNDERGROUND UTILITIES. IF DURING CONSTRUCTION OPERATIONS THE CONTRACTOR SHOULD ENCOUNTER UTILITIES OTHER THAN THOSE SHOWN ON THE PLANS, HE SHALL IMMEDIATELY NOTIFY THE ENGINEER AND TAKE NECESSARY AND PROPER STEPS TO PROTECT THE FACILITY AND ASSURE THE CONTINUANCE OF SERVICE.
- ALL CONSTRUCTION SHALL CONFORM TO FAIRFAX COUNTY, VDOT, AND FAIRFAX COUNTY WATER AUTHORITY STANDARDS AND SPECIFICATIONS.
- ALL UTILITIES TO BE PLACED UNDER VDOT RIGHT OF WAYS SHALL BE BORED AND JACKED UNLESS MODIFIED BY PERMIT.
- THE DEVELOPER IS RESPONSIBLE FOR ANY DAMAGE TO VDOT RIGHT OF WAYS DUE TO THIS DEVELOPMENT.
- THE DEVELOPER SHALL PROVIDE ADEQUATE YEARS OF CLEANING TRUCKS AND/OR OTHER EQUIPMENT OF MUD PRIOR TO ENTRANCE ONTO A VDOT RIGHT OF WAY.
- CONTROLLED FILLS MUST BE COMPACTED TO 95% AS DETERMINED BY METHOD "A" PER STANDARD PROCTOR METHOD T-99 OR ST1M B698. DENSITY MUST BE CERTIFIED BY A REGISTERED PROFESSIONAL ENGINEER AND RESULTS SUBMITTED TO FAIRFAX COUNTY PRIOR TO FOOTING CONSTRUCTION.
- ALL STREETS AND PARKING AREAS OUTSIDE DEDICATED RIGHTS OF WAY WILL BE PRIVATELY MAINTAINED.
- ABOVE GROUND SIGN FOR THE HANDICAP SPACE TO BE INSTALLED AS PER FAIRFAX COUNTY REQUIREMENTS.
- THIS PLAN IS IN ACCORDANCE WITH THE ADOPTED FAIRFAX COUNTY COMPREHENSIVE PLAN.
- THE SITE IS WITHIN THE HIGHWAY CORRIDOR OVERLAY DISTRICT AND THE SIGN CONTROL OVERLAY DISTRICT.



CONSTRUCTION LIMITS AND TREE LINES:

LIMITS OF CONSTRUCTION AND GRADING (IN OPEN OR PAVED AREAS WITH LITTLE OR NO VEGETATION)

LIMITS OF CONSTRUCTION, GRADING AND CLEARING (IN AREAS WHERE EXISTING TREES ARE TO BE REMOVED)

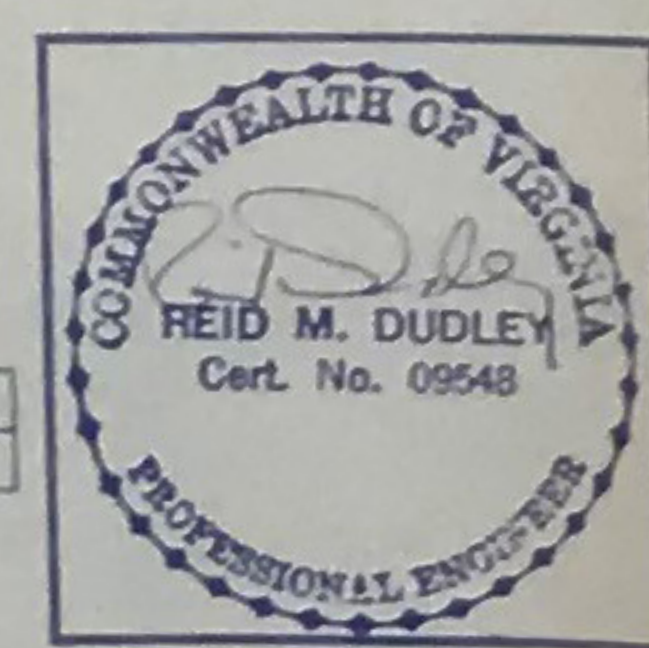
EXISTING TREE LINE

AMERICAN RECEIVED
 FEB 27 1992
 AUTOMATIC SPRINKLER SYSTEMS, INC.

LEESBURG PIKE - ROUTE # 7
 (R.O.W. VARIES)
 CENTERLINE R.O.W.

NO.	DESCRIPTION	REVIEWED BY	APPROVED BY	DATE
	REVISION APPROVED BY ENVIRONMENTAL MANAGEMENT			

THIS CERTIFIES THAT THE CHANGES CIRCLED IN RED ARE THE ONLY REVISIONS TO THIS PLAN OTHER THAN ALREADY APPROVED.



SCALE: 1" = 30'
 BY: CPS, DTC, EB
 DATE: APRIL 16, 1990
 REVISIONS:
 1-30-90 FIRE MARSHAL
 7-12-90
 1-30-92

SITE PLAN - INFORMATION SHEET

TYSONS PROMENADE
 DRANESVILLE DISTRICT, FAIRFAX COUNTY, VIRGINIA

RUNYON, DUDLEY, ANDERSON, ASSOCIATES, INC.
 ENGINEERING, SURVEYING & PLANNING
 10858 MAIN STREET SUITE 101
 FAIRFAX, VIRGINIA 22030 (703) 591-4606

SHEET 1 OF 1
 F-1372-5P

LARGE ORIFICE UPRIGHT & PENDENT SPRINKLERS

ISSUE C SOLDER TYPE, 17/32" ORIFICE - 3/4" NPT CONNECTION

DESCRIPTION
The Model F1 Large Orifice Upright and Pendent Sprinklers are made of brass and are designed for use in fire protection systems. They are available in upright and pendent configurations. The upright sprinkler has a glass bulb and a glass gasket. The pendent sprinkler has a glass bulb and a glass gasket. The glass bulb contains a liquid that expands when heated, causing the glass bulb to break and the sprinkler to discharge.

INSTALLATION
The Model F1 Large Orifice Upright and Pendent Sprinklers should be installed in accordance with the instructions provided in this manual. The upright sprinkler should be installed in a vertical position. The pendent sprinkler should be installed in a horizontal position.

TEMPERATURE RATING
The Model F1 Large Orifice Upright and Pendent Sprinklers are available in the following temperature ratings: 135°F, 155°F, 175°F, 200°F, 225°F, 250°F, 275°F, 300°F, 325°F, 350°F, 375°F, 400°F, 425°F, 450°F, 475°F, 500°F, 525°F, 550°F, 575°F, 600°F, 625°F, 650°F, 675°F, 700°F, 725°F, 750°F, 775°F, 800°F, 825°F, 850°F, 875°F, 900°F, 925°F, 950°F, 975°F, 1000°F.

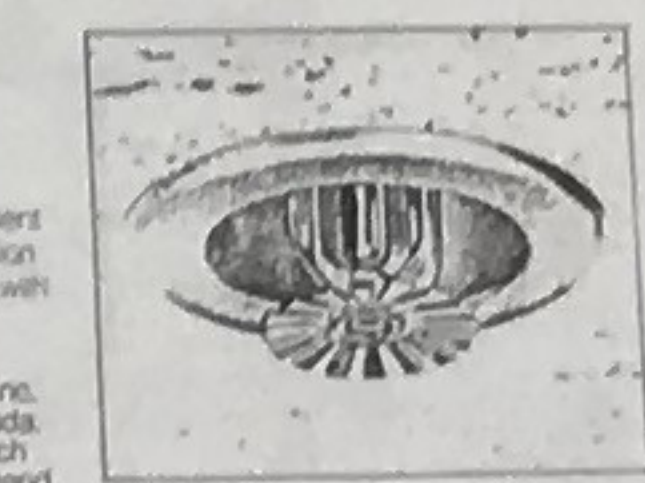
APPROVALS
The Model F1 Large Orifice Upright and Pendent Sprinklers are approved by the following organizations: Underwriters Laboratories (UL), Factory Mutual Research Corporation (FM), and the National Fire Protection Association (NFPA).

CONVERSION TABLE

INCHES	MILLIMETERS
1/8"	3.175
1/4"	6.350
3/8"	9.525
1/2"	12.700
5/8"	15.875
3/4"	19.050
7/8"	22.225
1"	25.400

Reliable

Model F1
Recessed
Design
Sprinkler



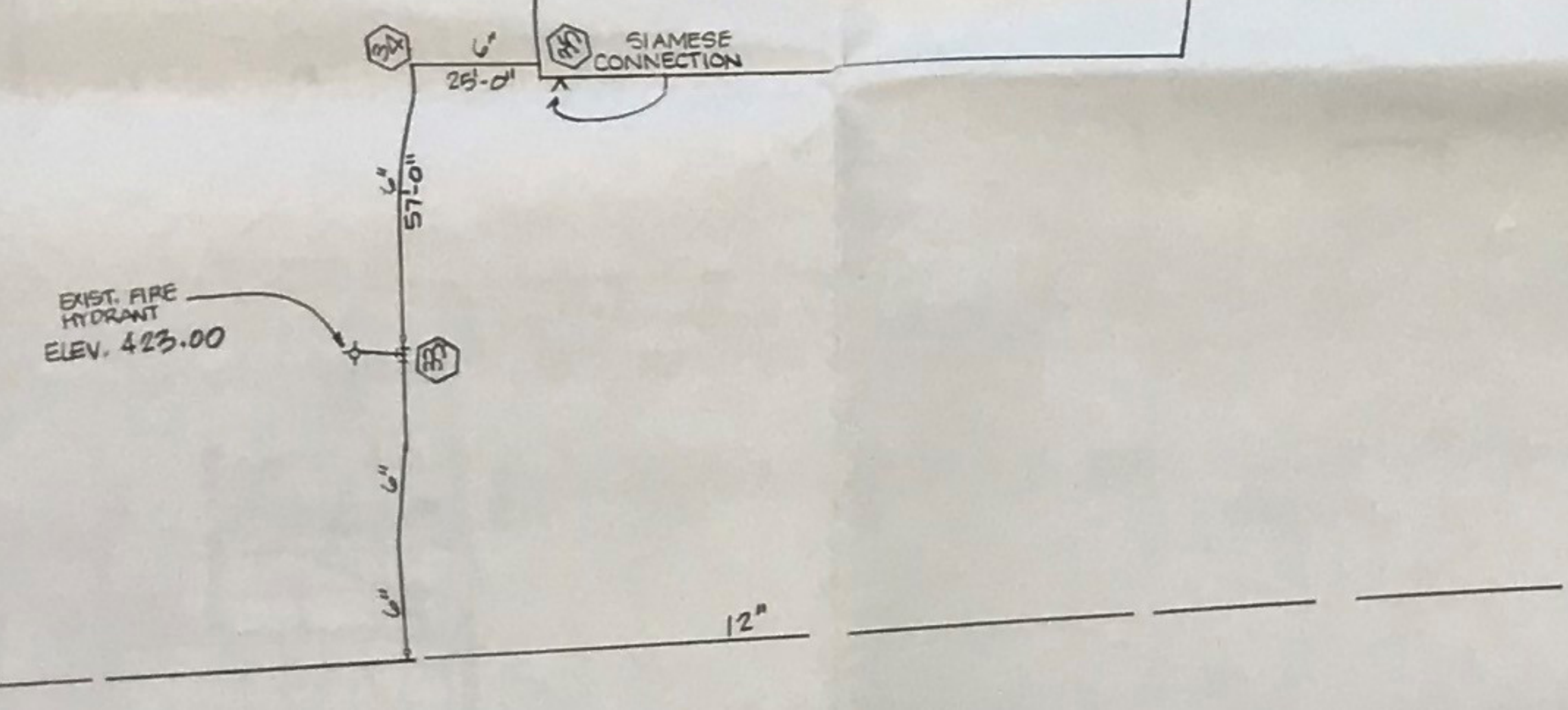
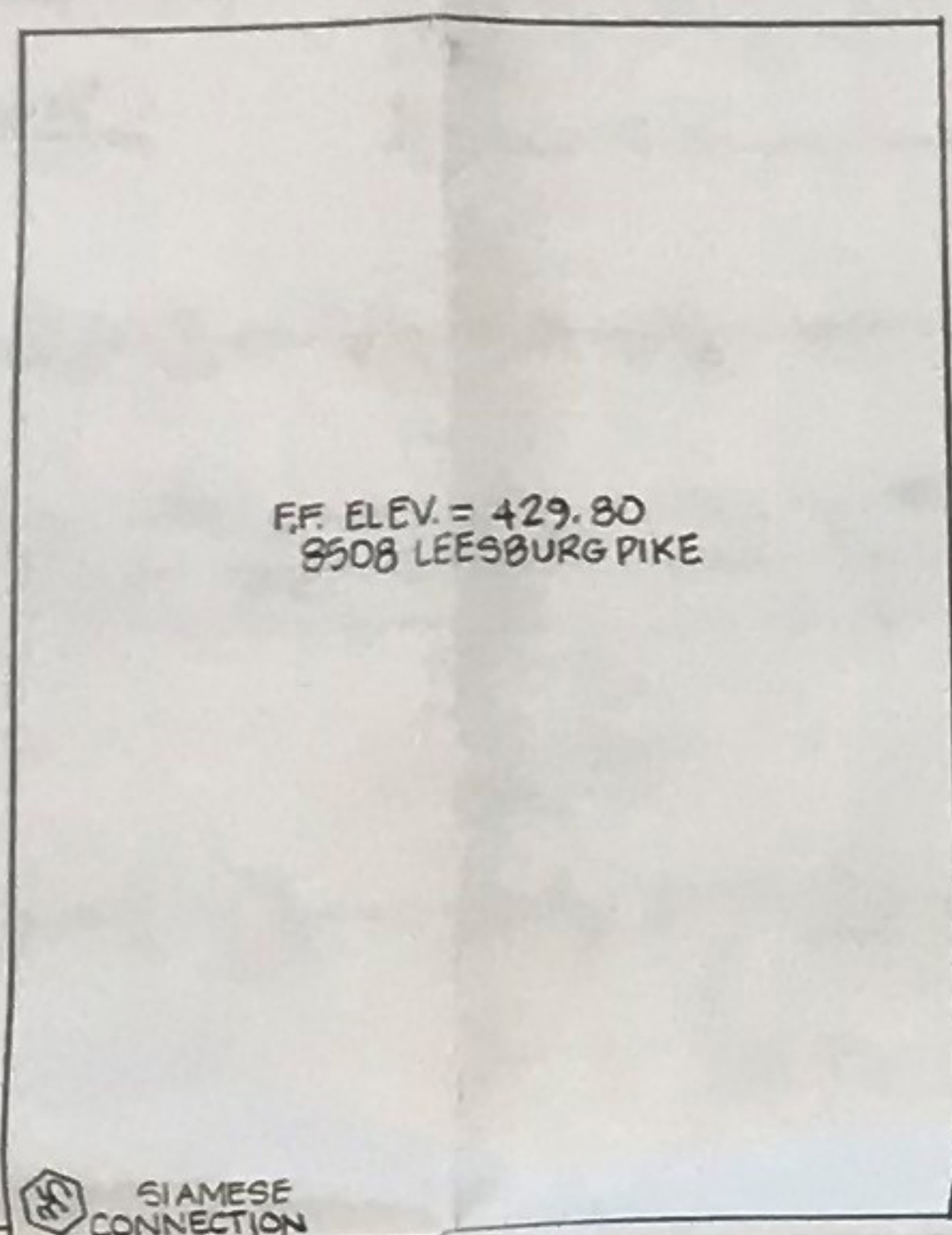
- Designer's Features**
- Highly decorative and adjustable recessed pendant sprinkler
 - Placed and easy installation
 - Compatible with an equalizing arrangement
 - Adjustment to both pendant position and minimum height
 - Adjustment to pendant position with minimum height
 - Finishes to match any decor
 - Listed by Underwriters Laboratories, Inc. & Underwriters Laboratories of Canada. Approved by Factory Mutual Research Corp., Fire Offices Committee & Verward for the International Fire Code (IFC).

Model	Temperature Rating	Orifice Size	Response Time	Weight	Height
F1-135	135°F	17/32"	1.5	1.5	1.5
F1-155	155°F	17/32"	1.5	1.5	1.5
F1-175	175°F	17/32"	1.5	1.5	1.5
F1-200	200°F	17/32"	1.5	1.5	1.5
F1-225	225°F	17/32"	1.5	1.5	1.5
F1-250	250°F	17/32"	1.5	1.5	1.5
F1-275	275°F	17/32"	1.5	1.5	1.5
F1-300	300°F	17/32"	1.5	1.5	1.5
F1-325	325°F	17/32"	1.5	1.5	1.5
F1-350	350°F	17/32"	1.5	1.5	1.5
F1-375	375°F	17/32"	1.5	1.5	1.5
F1-400	400°F	17/32"	1.5	1.5	1.5
F1-425	425°F	17/32"	1.5	1.5	1.5
F1-450	450°F	17/32"	1.5	1.5	1.5
F1-475	475°F	17/32"	1.5	1.5	1.5
F1-500	500°F	17/32"	1.5	1.5	1.5
F1-525	525°F	17/32"	1.5	1.5	1.5
F1-550	550°F	17/32"	1.5	1.5	1.5
F1-575	575°F	17/32"	1.5	1.5	1.5
F1-600	600°F	17/32"	1.5	1.5	1.5
F1-625	625°F	17/32"	1.5	1.5	1.5
F1-650	650°F	17/32"	1.5	1.5	1.5
F1-675	675°F	17/32"	1.5	1.5	1.5
F1-700	700°F	17/32"	1.5	1.5	1.5
F1-725	725°F	17/32"	1.5	1.5	1.5
F1-750	750°F	17/32"	1.5	1.5	1.5
F1-775	775°F	17/32"	1.5	1.5	1.5
F1-800	800°F	17/32"	1.5	1.5	1.5
F1-825	825°F	17/32"	1.5	1.5	1.5
F1-850	850°F	17/32"	1.5	1.5	1.5
F1-875	875°F	17/32"	1.5	1.5	1.5
F1-900	900°F	17/32"	1.5	1.5	1.5
F1-925	925°F	17/32"	1.5	1.5	1.5
F1-950	950°F	17/32"	1.5	1.5	1.5
F1-975	975°F	17/32"	1.5	1.5	1.5
F1-1000	1000°F	17/32"	1.5	1.5	1.5

Reliable

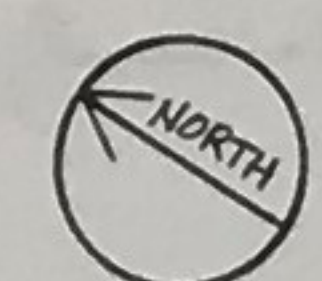
FLOW TEST DATA SUPPLIED BY DAVE GUERRA AT FAIRFAX COUNTY WATER AUTHORITY:
 STATIC: 53 PSI ELEV. 423.00 FT.
 RESIDUAL: 47 PSI MIN. GRADIENT: 530 FT.
 FLOW: 1000 GPM

MINIMUM GRADIENT: 530 FT.
 HYDRANT ELEVATION: - 423 FT.
 107 FT.
 X .4394 PRESSURE LOSS
 46 PSI=ADJUSTED STATIC
 53 PSI - 46 PSI = 7 PSI
 47 PSI - 7 PSI = 40 PSI
 40 PSI = ADJUSTED RESIDUAL



LEESBURG PIKE

SITE PLAN
 1" = 30'-0"



- GENERAL NOTES**
- This system is hydraulically calculated.
 - All system control valves to be supervised by a tamper switch.
 - All main piping to be sch#10.
 - All line piping to be Eddylite pipe.
 - All main piping to be hung from trapeze hangers modulus .37 or greater.
 - All branch lines to be hung from the top of joists with 3/8" all thread rod.
 - Existing alarm valve, gate valve, and all underground piping to remain.
 - American Automatic Sprinkler to install a new sprinkler system beyond the existing alarm valve.
 - Sprinkler system to be installed in accordance with NFPA standards.

Plans Reviewed by Fire Marshal
 Plans are:
 Approved
 Approved as noted
 Not Approved, correct and resubmit
 Date: 2-6-92
 By: D. THOMAS

Approval WILL BE MADE UNLESS APPROVED PLANS ARE ON JOB SITE

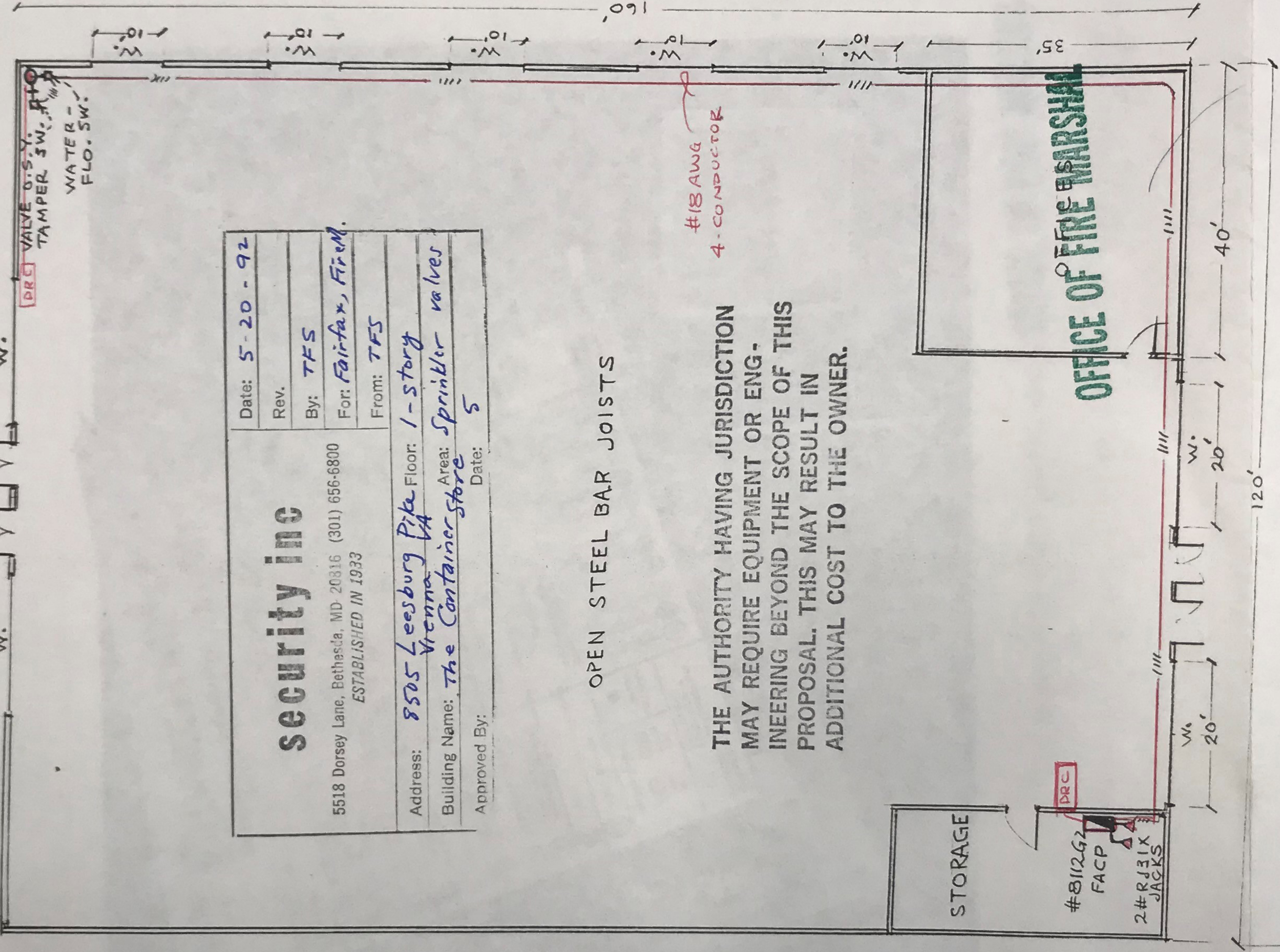
Substation Requirements shall conform to:
 BOCA
 NFPA 13

Although the sprinkler heads are shown as being located in the center of the tile it is not the intent of this contract to do so. The sprinklers shall be no closer than 4" to the ceiling grids.
 FIRE MARSHAL FIELD INSPECTION NECESSARY FOR FINAL APPROVAL

GENERAL NOTES	SPRINKLERS				APPROVALS			REVISIONS		AMERICAN AUTOMATIC SPRINKLER SYSTEMS, INC. OFFICE OF FIRE MARSHAL	PROPERTY PROTECTED THE CONTAINER STORE 8508 LEESBURG PIKE VIENNA, VIRGINIA	DATE 2-26-92 SCALE 1" = 30'-0" JOB NO.
	TYPE	SYM	TEMP	NO.	AUTHORITY	DATE SUB	DATE REC	NO.	BY			
					FF CO.	2/21/92						
					HARVEY-CLOUGH	2/21/92						

Name: **The Container Corp.** Date: **5-19-92** Approved by: **T.F. SMITH, #527 ML**
 Structure: **TYSON'S CORNER, VA: 8505 Leesburg Pike, VIENNA, VA**
 Wall-to-Wall Carpet: Plaster: Drywall: Size: Large: Mod: Small:
 Map Page: _____ Grid: _____ U.I.: **71** NFPA _____ Ceiling higher than 10 ft.: Wallpaper:
 Plenum Ceiling: _____ Fire Marshal Appvd: Date Submitted: **5-20** Pay Parking: _____

ENCLOSURE A



security inc	
5518 Dorsey Lane, Bethesda, MD 20816 (301) 656-6800 ESTABLISHED IN 1933	
Date: 5-20-92	Rev.
By: TFS	
For: Fairfax, Fr.M.	
From: TFS	
Address: 8505 Leesburg Pike Floor: 1-story	
Building Name: The Container store	Area: Sprinkler valves
Approved By: _____	Date: 5

OPEN STEEL BAR JOISTS

THE AUTHORITY HAVING JURISDICTION
 MAY REQUIRE EQUIPMENT OR ENGINEERING BEYOND THE SCOPE OF THIS PROPOSAL. THIS MAY RESULT IN ADDITIONAL COST TO THE OWNER.

- Burglary, Fire Protection and CCTV Legend
- Control Panel
 - Key Remote Control
 - Digital Remote Control
 - Digital Communicator
 - Transmitter Direct Wire
 - Motion Detector
 - Shock Sensor
 - Glass Breakage
 - Foll
 - Trap
 - Emergency Button
 - Door Contacts (Surface)
 - Door Contacts (Flush)
 - Entry / Exit
 - CCTV Camera
 - CCTV Monitor
 - CCTV Switcher
 - Video Cassette Recorder
 - Siren Speaker
 - Bell
 - Sirene
 - Sirobe w/ Siren
 - Sirobe w/ Bell
 - Water Flow Switch
 - Valve Tamper Switch
 - Smoke Detector
 - Heat Detector
 - Pull Station
 - Door Holder
 - Telephone Jack