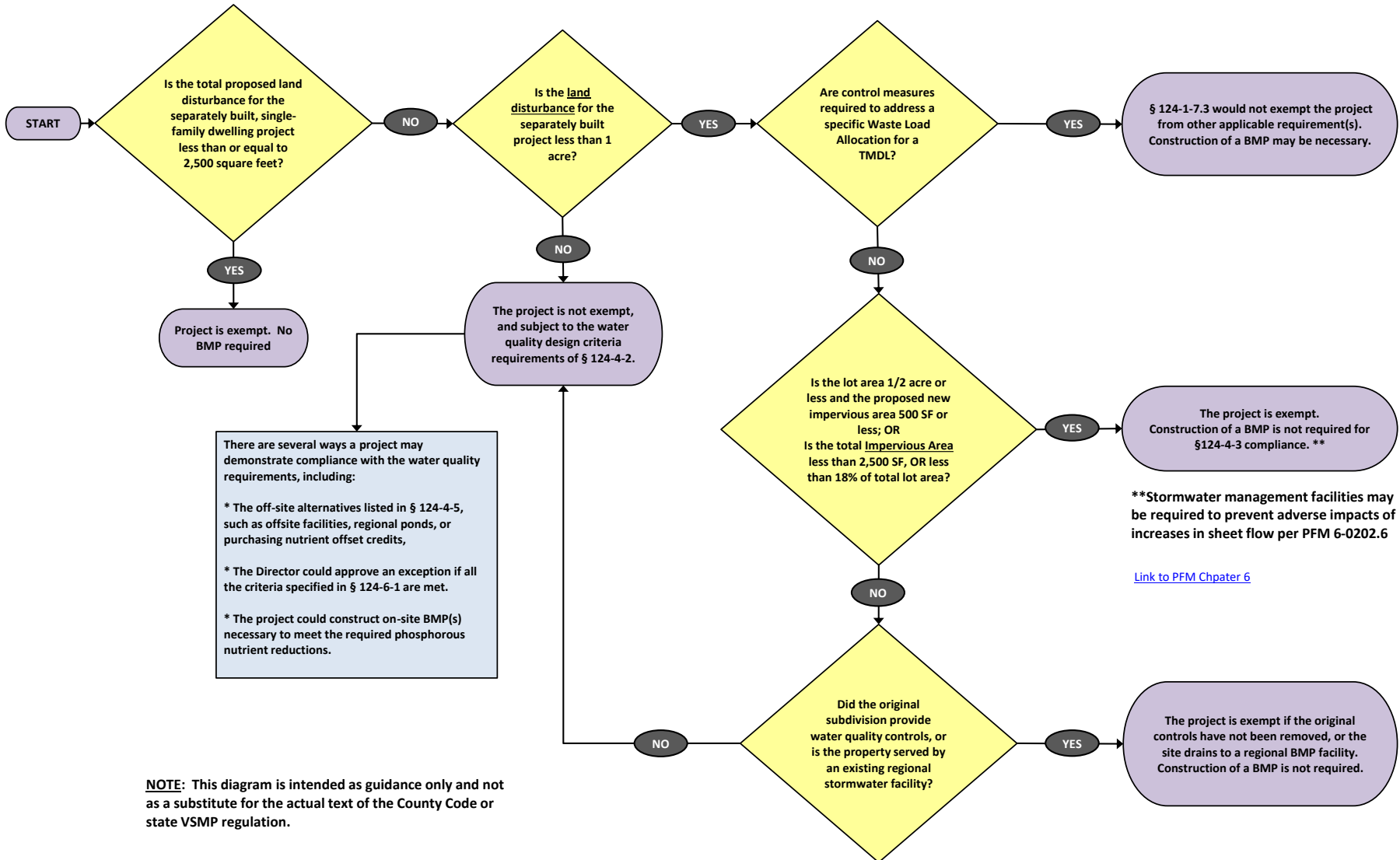


SINGLE-FAMILY INFILL HOME EXEMPTION
 (Single-Family Dwellings, Additions, Modifications, Demolitions or Accessory Structures
 that are Not Part of a Common Plan of Development or Sale)

When is a BMP required for Single Family Detached Residential Construction?



NOTE: This diagram is intended as guidance only and not as a substitute for the actual text of the County Code or state VSMP regulation.