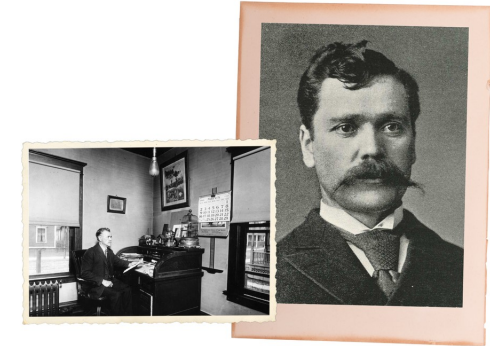




HISTORIC ALLAN HERSHELL CAROUSEL!



This Herschell carousel was built in 1918 by the Herschell company based in Tonawanda, New York. The carousel is one of 3,000 built by one of Herschell's companies. In 1975, this carousel was purchased for the Park Authority and operated in the Lee District until moved to Frying Pan Farm Park in 2011.

Allan Herschell was a Scottish immigrant and a trained mechanic who became intrigued by a new amusement powered by gears and steam so he convinced his business partner to build a carousel in 1883. The Herschell Company specialized in portable carousels that could be taken to county fairs and carnivals.

This portable carousel originally had wooden hand carved horses, but these were replaced after WWII with cast aluminum horses which are more durable for transporting. These horses are called "jumpers" since they have four legs in the air and are meant to simulate galloping horses in a Medieval jousting competition when they move up and down.