

Appendix C – Summary of Public Involvement

This appendix contains meeting summaries from the two public forums and the five Watershed Advisory Group (WAG) meetings in chronological order:

Issues Scoping Forum: 10/1/08

WAG #1: 12/1/08

WAG #2: 3/16/09

WAG #3: 5/18/09

WAG #4: 2/22/10

WAG #5: 6/29/10

Draft Plan Forum: 9/16/10

Little Rocky Run – Johnny Moore Creek Presentation Summary Introductory and Issues Scoping Forum 10/1/08

Participants were welcomed by Fairfax County Stormwater Planning Division Staff, Supervisor Michael Frey (Sully District) and Supervisor Pat Herrity (Springfield)

A watershed primer was presented that described the characteristics of a watershed and the watershed planning units in Fairfax County. The watershed planning units were defined:

- A Watershed Management Area or WMA is a portion of a watershed with similar land use and development characteristics for evaluation and management. For this study, they are generally 3-5 square miles in area.
- A subwatershed is an even smaller area used for more detailed evaluation in the planning process. They vary in size for this study between 100 and 300 acres in area.

The watershed planning process was also described:

- Evaluate data to determine the state of the watersheds
- Identify issues that the plan will address
- Establish a vision for the watershed goals that will improve, enhance and protect the watershed
- To achieve these goals, develop specific actions
- Create a framework and timeframe for implementation.

Over the past year, previous studies have been reviewed and known data about the watershed has been compiled. The watersheds have been characterized and the information presented in a draft Watershed Workbook. After this Introductory and Issues Scoping Forum, subwatershed strategies will be developed and a draft Watershed Plan prepared. This draft plan will be presented in another public form. After feedback from the community, the final plan will be prepared and presented to the Board of Supervisors for adoption.

The plan will recommend various methods to address common watershed issues. These recommendations may include:

- retrofitting existing stormwater management ponds
- creating new Best Management Practices (BMPs)
- implementing Low Impact Development (LID) techniques
- revegetate stream buffers
- stabilize and restore streams
- implementing changes to policies and regulations.

The benefits of creating watershed plans were presented:

- to help restore and preserve the vital natural resources which form the basis of people's lives
- watershed impact our drinking water, our health and the health of the environment
- the watershed plans will help the County and its residents make informed decisions to help ensure a better future in regards to our watersheds and quality of life

A summary of the Watershed Workbook was also presented.

Chapter 1 of the workbook provides a summary of previous studies related to the watersheds. Studies and reports are presented by topic: reports that provide data, reports that discuss policy changes and those that recommend proposed projects and improvements.

Chapter 2 of the workbook provides the subwatershed characterization. The chapter is organized by the three WMAs in the watersheds: Johnny Moore Creek, Little Rocky Run – Lower and Little Rocky Run – Upper.

Examples of the maps that are included in Chapter 2 were presented:

Existing and Future Conditions Land Use

Highlighted the importance of the Resource Conservation (RC) District in these watersheds – this area was rezoned by the Board of Supervisors in 1982 to protect the Occoquan Reservoir. In this district, development is limited to one dwelling unit per 5 acres. All of Johnny Moore Creek and the southern portion of Little Rocky Run are located in this district.

Stormwater Infrastructure

This map shows the location of stormwater management facilities, parcels that are controlled by some type of stormwater management, stormwater complaints and the storm sewer system.

Stream Condition

This map is based on data from the County's Stream Physical Assessment performed in 2005. Impact areas such as obstructions, erosion, dumps, headcuts and crossings are shown on the map. The map also identifies stream reaches that are actively evolving and unstable based on the Channel Evolution Model (CEM). Habitat assessment scores are also reflected on the stream reaches to reflect if the habitat assessment was ranked as very poor, poor, fair, good or excellent.

Preliminary Modeling Results

Maps reflecting the results from preliminary modeling of pollutant loads, stream discharges, and floodplains were presented.

Pictures of problem areas found during the field reconnaissance were presented.

A summary of the methodology used in the subwatershed ranking was presented based on the County's watershed planning goals and planning objectives (hydrology, habitat, stream water quality, drinking water quality and stewardship). Examples of objective ranking maps as well as source composite and overall composite ranking maps were presented.

The use of this data in the watershed planning process was discussed. The rankings and maps are one tool to be used in the planning process and will provide a framework for identification of problem areas and to evaluate the effectiveness of proposed projects and policy changes. The County will also be able to use the ranking County-wide in order to prioritize projects.

Methods for public participation were presented:

- attend the public forum
- email comments to watersheds@fairfaxcounty.gov
- phone the County at 703-324-5500 TTY 711
- use the virtual forum on the web:
www.fairfaxcounty.gov/dpwes/watersheds/johnnymoorecreek.htm

Following the workshop, a watershed advisory group (WAG) of 12 to 20 members will be formed. The WAG will include representative watershed interests, review plan ideas and projects and serve as a liaison to the community. If interested in serving on the WAG, contact karenfirehock@virginia.edu.

An open house where the participants were asked to provide comments at three WMA stations was held.

Fairfax County Issues Scoping Forum Notes: Oct. 1, 2008, Centreville Elementary School

(Note: see dots on maps for locations. AMEC has maps from the workshop.)

HOA = Homeowners Associate

LRR = Little Rocky Run

JMC = Johnny Moore Creek

As personal contact information is included here, this document must not be posted to any public sites unless names and numbers are first deleted.

Little Rocky Run – Upper

Recorder: Kate Bird, KBird@e2inc.com

1. Undercutting throughout this area of stream
 - a. (Larry Baldwin)
2. Dump and municipal school bus lot may be impacting water quality – suggest water monitoring
 - a. (Larry Baldwin)
3. Retention pond – large, smells bad & unsightly – poorly constructed and does not seem to drain adequately
 - a. (Larry Baldwin)
4. Colin Powell Elementary location – add to land use map (Lynne Mowery)
5. Culvert eroding stream bed and causing flooding – overflow overwhelming habitat
6. Heavy water runoff from subdivision – ponds exist but possibly inadequate – need to investigate

Note: Culpepper Rift along where elementary school lies – alluvial soil with very little basalt. Meeting of low country and piedmont geology. Many upper drainages have been paved over time.

Little Rocky Run – Lower

Recorder: Michael Baker, mbaker@e2inc.com

1. Erosion control needed,
 - a. South Springs Drive – Al Francese (703-818-8178)
2. Solid waste and trash dumping
 - a. Entire watershed but especially the NE tributary under New Braddock Road
3. Construction along 29 corridor
 - a. Route 29- Friends of Little Rocky Run
4. Maintenance/overhaul of most of the containment (dry) ponds needed
 - a. Entire watershed – LRR HOA
5. Downcutting and channelizing
 - a. See map illustration – Ned Foster
6. RPA Violations in backyards

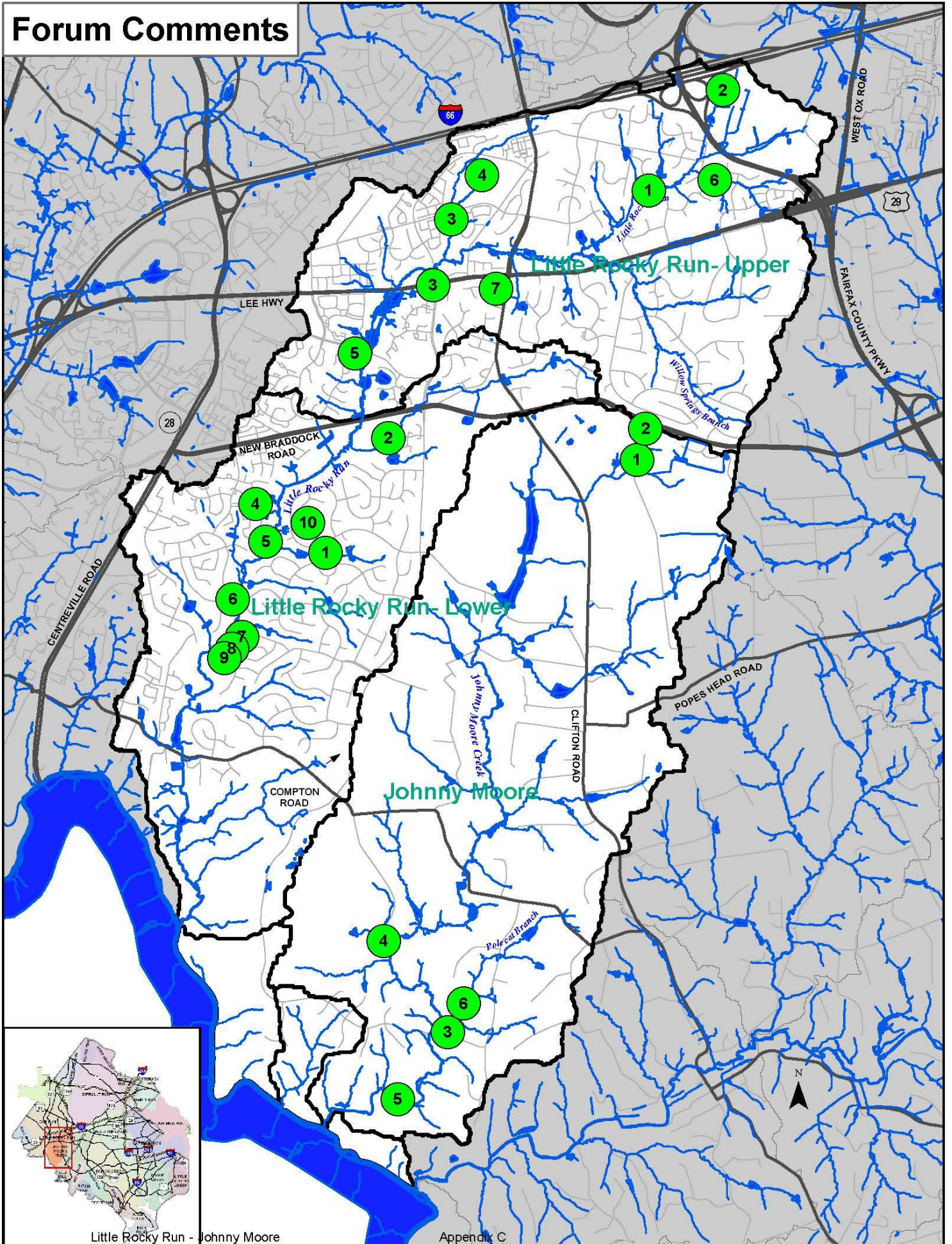
- a. All along LRR (both upper and lower) —Ned Foster
- 7. Need access to natural resources for recreation all along LRR
 - a. East side of LRR – LRR HOA and Lynn Foster
- 8. Bridges and trails as a solution to #7 (same contact as #7 above)
- 9. Paving options for trails (mow, asphalt or natural?)
- 10. Drainage stormwater inlet sits at highest point on land (stays dry)
 - a. Stonehunt Court on LRR – Paul Jensen at 13706 (571-643-6788)
 - b. Best access to site is from Stonehurst Place

Johnny Moore Creek

Recorder: James Wilkinson, Jwilkinson@e2inc.com

- 1. Doyle Rd. Subdivision – watershed impacts from lack of water and sewer connections
 - a. First house on right after turning onto doyle road from Braddock Road
 - b. Charles Dayharsh – 5720 Doyle Rd., cdayhardsh@verizon.net
- 2. Ditches covered by asphalt Doyle Rd.
 - a. Sedimentation and erosion along neighboring properties, ponds, JMC
 - b. Interested in water quality testing for this portion of JMC – all resulting from construction activities on church property – lawsuit underway
 - c. Location – Kings Chapel – 12925 Braddock Road
 - d. Suzie Kochare – Doyle Rd. 703-267-1193
- 3. Polecat branch and JMC – erosion has increased sig. in the last few years – no new construction (see number 6 – upstream polecat branch)
 - a. Paul Jensen – paul_jensen@cox.net 571-643-6788
- 4. Stream erosion at Jct of union hill rd. & JMC, regular flood events as well here
 - a. Paul Jensen
- 5. Streambank erosion along JMC in southern part of watershed
 - a. Location – general (also from Paul Jensen)

Forum Comments



Healthy Watersheds, Healthier Communities

Fairfax County Stormwater Planning Division

Meeting Summary for Johnny Moore Creek and Little Rocky Run

Watershed Advisory Committee Meeting

Liberty Middle School, December 1, 2008

Purpose:

The purpose of the meeting was to orient the new watershed advisory group (WAG) members to the watershed planning process for Little Rocky Run (LRR) and Johnny Moore Creek (JMC) and to solicit any additional watershed issues to address in the plan.

Watershed Advisory Committee:

Karen Firehock welcomed participants and provided a brief overview of the participation guidelines. Each attendee received a watershed planning notebook with background materials and a CD containing the watershed workbook. Ms. Firehock explained that the role of the WAG members is to provide meaningful participation options for a diversity of stakeholders, incorporate community ideas into the scope of the watershed plans and to assist with the prioritization of projects to be implemented throughout Fairfax County's 30 watersheds over the next 25 years. The WAG will assist in identifying issues of community concern, highlight key community priorities for watershed plan goals and conduct outreach functions. The WAG will meet approximately four to six times over a 10-12 month period with the understanding that meeting timing depends upon the work being performed (e.g. meet when a new study or modeling report is ready for review). WAG members are also responsible for providing their constituency groups with updates about the project and enlist the participation of members in the draft plan review forum. This is an important facet of the WAG as one person may not be able to fully represent all the interests of their respective group.

Ms. Firehock explained that there is only one representative allowed per group to ensure balanced representation on the committee. However, members of the WAG may bring alternates. She also emphasized that all WAG meetings are open to the public and anyone may attend and address the group. Finally, she noted that there were a number of groups invited who did not respond, so if WAG members know those individuals (listed on the member list as "invited but not confirmed") they should encourage them to join. If WAG members notice there are any other key groups missing, they should ask those groups to contact Ms. Firehock so she can determine if they are within the watershed boundaries and could join the project.

The WAG members also asked if emails could be shared. Hearing no objections, Ms. Firehock agreed to send an email list to everyone. She also noted that team contact information would be shared (found at the end of this summary) and that it was included in the participation guidelines sent previously.

Two slide shows were presented. Copies are posted on the watershed website at <http://www.fairfaxcounty.gov/dpwes/watersheds/> under Little Rocky Run and Johnny Moore Creek webpage.



Fairfax County Stormwater Planning Division

12000 Government Center Pkwy, Ste. 449 • Fairfax, VA 22035 • 703-324-5500, TTY 711

www.fairfaxcounty.gov/dpwes/watersheds



Watershed Primer:

Eric Forbes provided a watershed primer slide show to introduce participants to the watershed planning concept. He noted that the watersheds in LRR and JMC are in fairly good condition compared to some streams in the county. The county performed a number of studies to determine watershed condition including stream sampling and a physical assessment. One participant asked how the physical assessment was conducted. Mr. Forbes explained that this assessment was done by a consulting firm for the county and that they walked every stream in the watershed to determine channel condition. Another member asked about how to find the RPA boundaries. Mr. Forbes said they are available on line at http://www.fairfaxcounty.gov/maps/gallery_WallMaps.htm and then click on CBPA and watersheds map. There is also a digital map viewer available by clicking on Chesapeake Bay Map and the tax map panel.

Overview of Watershed Planning:

Fred Rose gave a brief overview of the watershed plans to date. He explained that many recommendations on policy have been collected and the county is evaluating how best to address them, most likely through a centralized stakeholder advisory committee that can look county-wide. He emphasized that the primary role of the LRR and JMC WAG is to address projects and the best locations for them to ensure suitable solutions to stormwater runoff.

One participant asked about regional ponds. Mr. Rose noted that some had been sited in the past but never built. A solution is still needed for these areas of the watershed, but new solutions arising from this effort may be more decentralized and smaller scale, since development in the area has made it more difficult to install large regional systems. On the plus side, he noted that these smaller scale systems often cost less and also can do a better job of treating water quality.

One participant asked who pays for the watershed plans. He noted that his HOA would be concerned that participation in the plan and siting projects in their community would result in a fee to the HOA. Staff responded that if there were an existing stormwater facility that was found to be malfunctioning or is in disrepair, the HOA would likely be required to repair it. However, Mr. Rose noted that this is the case regardless of whether a watershed planning effort is undertaken. Several HOA members agreed that their HOAs are indeed responsible for the upkeep of their HOA-owned facilities.

Mr. Rose also noted that the county is certainly open to cost sharing on any projects. If an individual installs their own private raingarden, the county would not be monitoring that or assessing any fees. Projects may be installed on private lands with permission as well as at public facilities, such as schools. If the county installs a project, the design and maintenance agreement would be developed in advance. Finally, staff noted that there would be more projects than funds and a key role of the group will be to help prioritize the preferred project list and suggested locations. All agreed that there is no desire to place projects where they are not wanted. An important role for the WAG is to advise the county on locations and to help find sites that are most suitable and desirable.

Lynne Mowery provided an overview of what is known about county streams and the comments received to date. First, she provided a description of the Watershed Workbook and the data provided on the maps in the Workbook. Problems in the watersheds identified in existing studies and issues identified at the Scoping Forum held on October 1, 2008 were presented. Existing studies and monitoring of the watershed show that benthic scores in the streams are low and that stream bank stability and buffer conditions are a concern on many of the stream reaches. Total Maximum Daily Load (TMDL) development for Bull Run for benthic and bacteria will also impact Little Rocky Run and Johnny Moore Creek because they flow into the impaired segment of Bull Run. Issues identified at the Scoping Forum were presented to the WAG for further discussion.

Ms. Mowery then presented some examples of structural projects that may be recommended as part of the watershed plan. Examples of stormwater pond retrofits, low impact development (LID), stream restoration, stream buffer restoration, road crossing projects and obstruction removal projects were presented.



Fairfax County Stormwater Planning Division

12000 Government Center Pkwy, Ste. 449 • Fairfax, VA 22035 • 703-324-5500, TTY 711

www.fairfaxcounty.gov/dpwes/watersheds



Additional issues to research and investigate:

Participants reviewed maps to determine other issues that should be flagged.

- Compton Heights noted that they have a severe erosion issue.
- A participant asked if a volunteer monitoring program could be implemented to provide more consistent local data and to be able to evaluate the watershed plan in the future.
- North Hart Run area has a lot of large lawns (as do several of the subdivisions) that may be contributing significant amounts of fertilizer and other chemicals to streams. Community education is needed regarding environmentally-friendly lawn care practices.
- A creek walk will be conducted by residents to look for additional suspected erosion locations (new site 7 on JMC Map).
- One road improvement project is planned and should be noted by project engineers (new site 8 on JMC Map).
- Flooding issue downstream of Green Trails Boulevard adjacent to Sorrel Chase Court
- Erosion on tributary north of Compton Heights Circle
- Erosion at low point on hard surface trail near Melstone Court
- A participant recommended that dry ponds in the Little Rocky Run subdivision be investigated for retrofit Next Steps: Lynne Mowery
- AMEC will review any new watershed issues raised at the meeting and research those. Participants should send any additional comments by Dec. 15. Later comments can also be included but the engineers need as much lead time as possible so they can move from problem characterization to devising potential solutions.
- Next meeting for the WAG to review proposed solutions is likely in early spring 2008.
- A short article will be sent to attendees to use in their newsletters and other communications about the project.

The Little Rocky Run and Johnny Moore Creek Watersheds Management Plan:

The Little Rocky Run and Johnny Moore Creek Watersheds have experienced environmental degradation, mostly due to urbanization. A planning process initiated by Fairfax County is underway to improve the quality of the waterways and their watersheds. The Watershed Advisory Group (WAG) provides input to Fairfax County. The WAG members serve as liaisons between their respective communities and the project team. AMEC Earth and Environmental, Inc. serves as the technical team lead and prepares watershed plan drafts and engineering studies and facilitates WAG and public meetings for the county. For more information please contact [<Eric.Forbes@fairfaxcounty.gov>](mailto:Eric.Forbes@fairfaxcounty.gov) or visit <http://www.fairfaxcounty.gov/dpwes/watersheds/johnnymoorecreek.htm>

(see last page for contact information and attendee list)



Fairfax County Stormwater Planning Division

12000 Government Center Pkwy, Ste. 449 • Fairfax, VA 22035 • 703-324-5500, TTY 711

www.fairfaxcounty.gov/dpwes/watersheds



To Contact Staff:

Karen Firehock, Public Involvement Coordinator, karenfirehock@virginia.edu, (434)975-6700, #222

Lynne Mowery, Project Manager, AMEC, lynne.mowery@amec.com, (703)488-3773

Eric Forbes, Ecologist, Fairfax County Stormwater Planning Division, Eric.Forbes@fairfaxcounty.gov, (703)324-5717

Fairfax County Watershed Website: <http://www.fairfaxcounty.gov/dpwes/watersheds/johnnymoorecreek.htm>

Use this site for meeting dates, workshops and to read meeting summaries and reports.

Watershed Plans Comment Email Address: watersheds@fairfaxcounty.gov

Little Rocky Run and Johnny Moore Creek Watershed Advisory Committee					
Dec. 1, 2008 Meeting					
LRR	JMC	Attended	Group	Name	Title
x		yes	Westfields Golf Club	Tom Farris	Manager
x		yes	Friends of Little Rocky Run	Ned Foster	President
x	x	yes	Occoquan Watershed Coalition	Jim Bonhivert	President
		yes	Clifton Horse Society	Jean Voss	President
x		yes	Little Rocky Run HOA	Jeff Hummel	President
x		no	Compton Village HOA	Joseph F. Cottone	President
x		yes	Green Trails HOA	Jay Hurst	President
x		yes	North Hart Run HOA	Sara Dyer	
	x	yes	Cedar Knolls of Clifton HOA	Laurie Anderson	HOA rep
	x	no	Union Mills HOA	Gene Griffe	President
x		yes	Compton Heights HOA	William Ballou	Vice President

Staff and Guests Attending

Fairfax County Stormwater Management	Fred Rose	Chief, Assessment
Fairfax County Stormwater Management	Eric Forbes	Ecologist
AMEC Inc.	Lynne Mowery	Project Manager
AMEC Inc.	Matt Breen	Engineer
AMEC Inc.	Karen Firehock	Public Involvement
Springfield Supervisor Pat Herrity	Marlae Schnare	Staff
Sully Supervisor Michael L. Frey	Meghan Kiefer	Staff
Additional attendees	Al Francese Ann Farris	LRR HOA Alternate Guest



Fairfax County Stormwater Planning Division

12000 Government Center Pkwy, Ste. 449 • Fairfax, VA 22035 • 703-324-5500, TTY 711

www.fairfaxcounty.gov/dpwes/watersheds





Meeting Summary for Johnny Moore Creek and Little Rocky Run

Watershed Advisory Committee Meeting

Little Rocky Run HOA Recreation Center, March 16, 2009

Purpose: The purpose of the meeting was to provide an overview of the problem areas identified in the subwatershed characterization and to introduce examples of solutions that may be recommended to address stormwater problems. The group also discussed additional specific focus areas for the watershed plan. Copies of the presentations are appended to this summary.

Countywide Goals and Objectives:

Eric Forbes provided a presentation of Countywide Goals and Objectives for the watershed plan (see attached presentation). He explained that since the planning effort has been underway across the county for several years, many of the goals and objectives created during the initial watershed planning projects were very similar. In order to reduce duplication and make the planning process more efficient, the county has created three overarching goals for all of the current plans under development which are:

1. Improve and maintain watershed functions in Fairfax County, including water quality, habitat and hydrology.
2. Protect human health, safety and property by reducing stormwater impacts.
3. Involve stakeholders in the protection, maintenance and restoration of county watersheds.

The county also has created standard categories for objectives:

1. Hydrology
2. Habitat
3. Stream Water Quality
4. Drinking Water Quality
5. Stewardship

He then explained that the county uses specific indicators to monitor these objectives. Indicators include watershed impact indicators such as sediment loading or phosphorus, and source indicators such as channelized streams, urban land cover or habitat quality.

Karen Firehock asked the committee if there were other concerns or objectives under the above categories specific to Little Rocky Run and Johnny Moore's Creeks that should be considered. Committee members noted that trash and debris seemed to be particularly problematic for Little Rocky Run and Johnny Moore Creeks.

Problem Areas identified by Subwatershed Characterization:

Matt Breen presented problem areas that were identified by the Subwatershed Characterization (see attached presentation). It was explained that the subwatershed ranking is used to identify currently impacted subwatersheds, those in danger of becoming impacted in the future and the potential stressors that may cause watershed impairment. He noted that the ranking system does not replace "common sense." A problem that is observed by a staff member or a resident will be investigated even if it is not on any existing list. He described the "overall watershed composite score map" as being comprised of rankings for hydrology, habitat, stream water quality and drinking water quality (related to the Occoquan Reservoir). He explained that lower ranked areas will require more attention in order to improve their scores. He explained that the source composite ranking is a combination of multiple stressors such as impervious cover, buffer deficiencies and concentrations of nutrients.

Discussion:

One participant asked if current data were used to create the evaluations. Mr. Breen explained that data sources included past studies such as the Stream Protection Study, the Stream Physical Assessment conducted in 2002 and 2003, and randomized in-stream sampling conducted by the county since 2004. Other sources of data include county maintenance records, citizen complaints and field observations by the team. He noted that while the maps show areas where we should focus, further field reconnaissance will still be needed. Once these maps are finalized and potential projects determined, a cost benefit analysis will be undertaken to help determine the priority for the project. He noted that projects may be suggested for HOA property or other private property, such as a church parking lot. He emphasized the importance of the committee in helping to suggest appropriate locations, once the engineering team has determined the focus areas in the subwatersheds.

He also explained that in some areas lacking stormwater management, it may be the case that a large pond was rejected or never built. Several members noted that there are existing ponds that also need to be retrofitted. On one example slide, members commented that the pond in question was the “watershed’s worst” and was often filled with debris, including dumped furniture. Mr. Breen noted that there was a regional pond proposed for the Green Trails HOA that was never built. He explained that the team would be determining other measures that could be taken instead of the pond to achieve better results.

Another member asked what measures would be installed in floodplain areas. The staff responded that those projects would likely consist of either buffer or channel restoration. They clarified that most of the low impact development (LID) measures would be located outside of the floodplain to prevent encroachment and to prevent damage to the technology. For example, during a flood event, a raingarden can be clogged with sediment and rendered inoperable. It was also noted that trails in the floodplain could be improved to ensure that they are not contributing to excess runoff or erosion. Ms. Mowery added that in some more remote areas where streams are eroding, the best approach may be to leave the stream alone in order to avoid damaging the buffer in trying to access the stream. She explained that if the sources of the problem are addressed, the stream may eventually repair itself but it may not be a high priority to fix now, if property and lives are not at risk.

Several members suggested specific issues for consideration in the watershed plan (in addition to those suggested at the last meeting).

- The bridge widening at Rt. 29 may impact some “swamp mallow” (*Hibiscus sp.*) habitat. Should make sure that VDOT replaces any plants that are disturbed.
- There is an area zoned C-8 (commercial) along Little Rocky Run that would be a great place for LID measures to be incorporated as part of any development.
- The Green Trails HOA has a multi-purpose court that needs renovation and this may be a good place to consider a low impact development approach, since it is located in the floodplain.
- The Union Mills HOA has applied for a FEMA grant on the west side of the Union Mills HOA property to address flooding of backyards. The watershed planning team should be aware of the project (if funded) and possibly collaborate on the solution and final design.
- Existing dry ponds should be restored and planted to improve water quality wherever possible. A participant noted that the Union Mills neighborhood has two good candidate ponds for this approach.

Map Review: Participants reviewed watershed maps and discussed possible issues and projects with the team.

Issues and Questions discussed during the map review included:

- The residents of the Cedar Knolls subdivision are averse to granting the county easements for stormwater management projects
- There is an area of stream erosion and flooding on Compton Road, approximately 1/8 mile west of Ivakota Road

- Existing facilities in the Union Mills subdivision could be enhanced by improving/expanding their water quality benefit. It was also noted that they are located in our lowest ranked subwatersheds (Overall Composite), which will be a targeted area for restoration

Problem Areas and Possible Solutions:

Lynne Mowery provided an overview of options for stormwater management and common areas that can be “retrofitted.” For example, a parking lot can be redesigned to provide curb cuts to infiltrate water into a rain garden, or manufactured best management practices can be installed to detain and filter water to reduce stormwater volumes, velocities and contaminants. These are examples of a low impact development (LID) approach that seeks to duplicate the original hydrology of the watershed that allowed rainwater to slowly infiltrate and filter through the ground before reaching streams. Ms. Mowery explained that LID is based on five principles; conservation and minimization, storage, conveyance, landscaping and infiltration.

In some areas, simply removing practices that we now know don’t work well is a simple solution. She provided the example of a “trickle ditch” consisting of a low-flow concrete channel across the stormwater pond. She said that these ditches do not slow velocities and they tend to accumulate sediment which is transported to surface waters during higher flows. Instead, she suggested that ditches be removed and ponds be planted to better slow stormwater and trap sediment.

She noted that AMEC staff would evaluate the watershed to determine where new approaches are needed and which measures to employ. Eric Forbes reminded everyone that a key role of the committee is to help make suggestions concerning the most appropriate areas to consider for these mitigation measures. Ms. Mowery explained that this would be part of the “homework” that the team will send to them in mid-April.

Next Steps:

- AMEC will begin identification of specific project areas and provide homework to WAG members regarding possible projects (likely by mid-April).
- Next meeting to be held in late April to discuss proposed solutions.

The Little Rocky Run and Johnny Moore Creek Watersheds Management Plan:

The Little Rocky Run and Johnny Moore Creek Watersheds have experienced environmental degradation, mostly due to urbanization. A planning process initiated by Fairfax County is underway to improve the quality of the waterways and their watersheds. The Watershed Advisory Group (WAG) provides input to Fairfax County. The WAG members serve as liaisons between their respective communities and the project team. AMEC Inc. serves as the technical team lead and prepares watershed plan drafts and engineering studies and facilitates WAG and public meetings for the county. For more information please contact <Eric.Forbes@fairfaxcounty.gov> or visit <http://www.fairfaxcounty.gov/dpwes/watersheds/>

“The opinions represented herein do not necessarily represent those of Fairfax County or its agents.”

To Contact Staff:

Karen Firehock, Public Involvement Coordinator, karenfirehock@virginia.edu, (434)975-6700, #222

Lynne Mowery, Project Manager, AMEC, lynne.mowery@amec.com, (703)488-3773

Matt Breen, Project Engineer, AMEC, matt.breen@amec.com, (703) 488-3787

Eric Forbes, Ecologist, Fairfax County Stormwater Planning Division, Eric.Forbes@fairfaxcounty.gov, (703)324-5717

Fairfax County Watershed Website: <http://www.fairfaxcounty.gov/dpwes/watersheds/>

Use this site for meeting dates, workshops and to read meeting summaries and reports.

Watershed Plans Comment Email Address: watersheds@fairfaxcounty.gov

Little Rocky Run and Johnny Moore Creek Watershed Advisory Committee					
March 16, 2009 Meeting					
LRR	JMC	Attended	Group	Name	Title
x		no	Westfields Golf Club	Tom Farris	Manager
x		yes	Friends of Little Rocky Run	Ned Foster	President
x	x	no	Occoquan Watershed Coalition	Jim Bonhivert	President
x	x	no	Springfield Supervisor Pat Herrity	Marlae Schnare	Staff
x		yes	Sully Supervisor Michael L. Frey	Meghan Kiefer	Staff
x	x	alternate	Clifton Horse Society	Jean Voss	President
x		yes	Little Rocky Run HOA	Jeff Hummel	President
x		no	Compton Village HOA	Joseph F. Cottone	President
x		yes	Green Trails HOA	Jay Hurst	President
x		yes	North Hart Run HOA	Sara Dyer	
	x	yes	Cedar Knolls of Clifton HOA	Laurie Anderson	HOA rep
	x	alternate	Union Mills HOA	Gene Griffe	President
x		no	Compton Heights HOA	William Ballou	Vice President

Staff and Guests Attending

	Fairfax County Stormwater Management	Darold Burdick	Engineer
	Fairfax County Stormwater Management	LeAnne Astin	Ecologist
	Fairfax County Stormwater Management	Eric Forbes	County Project Manager
	AMEC Inc.	Lynne Mowery	Project Manager
	AMEC Inc.	Matt Breen	Project Engineer
	AMEC Inc.	Karen Firehock	Public Involvement
Alternate	Union Mills HOA	Mike Shipley	
Alternate	Sue	Clifton Horse Society	

Healthy Watersheds, Healthier Communities

Fairfax County Stormwater Planning Division

Meeting Summary for Johnny Moore Creek and Little Rocky Run Watershed Advisory Committee Meeting Little Rocky Run HOA Recreation Center #3, May 18, 2009

Purpose:

The purpose of the meeting was to review the proposed project locations and restoration strategies for the two watersheds and to provide feedback to inform project prioritization. Watershed Advisory Group (WAG) members were asked to consider if the project location is appropriate, if there are alternate locations, whether or not there are any conflicts that would prohibit certain projects and whether any projects are missing that should be added.

Project Schedule Overview:

Karen Firehock provided an overview of the schedule. The next meeting (WAG #4) was proposed for June 15 to review prioritized and ranked projects. Three WAG members noted that they will be out of town, so this date may need to be moved. Following the fourth WAG meeting, projects will be incorporated into the watershed plan and reviewed by the WAG at their fifth meeting (proposed for August). Once the plan has been reviewed by the WAG, any required changes will be made and the plan will be presented to the public at a final draft plan workshop for fall (possibly in September). The public's comments will inform development of the final draft plan which will be presented to the Board of Supervisors (BOS) in winter 2009 for adoption. Following adoption by the BOS, implementation will begin.

Process to develop the project list and strategies (presentation is on project website):

Lynne Mowery provided an overview of how the projects were selected. She reminded the WAG that the projects are intended to meet the established goals for the watershed plan. She explained that the subwatershed rankings were used to determine candidate projects from the "project universe". She noted that a project could be ranked as a high priority because the stream is impaired, but an area that is in good condition may need projects to ensure that its relative high quality is maintained. Ms. Mowery provided examples of projects done for the other county watershed plans (also provided as a handout).

One participant asked what percentage of spillways tend to fail. They noted that their HOA had to spend money to reconstruct their spillway. Darold Burdick responded that the technologies have improved, so hopefully there will be less failure in the future. He also noted that all systems require repair and replacement at some point. Another participant asked about who maintains ponds. County staff explained that dry ponds are maintained by the county and wet ponds are maintained by the HOAs generally.

Another participant asked why ponds that are recently constructed to county standards, or are still covered by their performance bond, had been added to the list. The participant questioned why these relatively new ponds, built to modern standards, would now need to be retrofitted. The project engineers responded that they did not have information for their field work on the age and bonding status of the ponds they visited. The team was simply looking for opportunities where existing structures could be improved. It was explained that a pond could be built to standards for controlling stormwater volume and velocities, but that it could still be possible to add water quality improvements.



Fairfax County Stormwater Planning Division

12000 Government Center Pkwy, Ste. 449 • Fairfax, VA 22035 • 703-324-5500, TTY 711

www.fairfaxcounty.gov/dpwes/watersheds



Also, a pond may have been built to meet the runoff only for a particular development, but if there is a stormwater problem off site that could be met by expanding or altering an existing pond, then the engineering team would recommend the pond be modified. The team emphasized that existing structures or already disturbed areas are utilized whenever possible to maximize efficiencies, instead of constructing new best management practices. The engineers concluded that they still need to prioritize projects and that project types have not been finalized. This project list is a first pass and will be modified based on feedback received at this meeting.

Another question related to how Little Rocky Run – Johnny Moore Creek projects will be prioritized when they must compete for funds county-wide. Staff explained that all projects are ranked using the same objective system so a project with a high priority score for LRR or JMC would be ranked equally against a high scoring project in another watershed. Staff reminded everyone that projects will be implemented over a 25 year period based on their ranking and logical order for getting work done. Therefore, there is some flexibility in how and when projects are designed and implemented on the ground. It was noted also that projects would be completed both to protect existing good water quality as well as to restore impaired creeks. Fred Rose explained that the final countywide list of projects would not be a list of the worst water quality problems, but rather a mix of projects, so that good creeks do not decline while extreme problems are addressed. The ranking system will also factor in the expected benefits of a project such as, how much pollution can be removed or reduced and at what cost?

Projects' Review:

The group broke up to review the three watershed areas and the comments were noted on flip charts (listed below). Participants also were asked to email any other questions or feedback within a week so that the team could plan their field visits for the following week. At the fourth WAG meeting, project rankings will be provided and the final proposed refined list of project will be reviewed once more.

Project #s refer to project # on maps found on the watershed web site at:

http://www.fairfaxcounty.gov/dpwes/watersheds/johnnymoorecreek_docs.htm

Notes from Flip Charts: LRR and JMC

#21: Significant erosion issues are occurring along power line easement just north of this location. Considering the facility at proposed project #21 is known to have sedimentation issues (it has been dredged twice recently and was recently retrofitted), this area needs to be visited. The area mentioned is thought to drain directly into Little Rocky Run.

LR-LR-0010:

#25: The site limits options here and the community does not want a pond here. Note that the regional pond (R-5), currently inactive, was proposed at one time for this location. The site needs to be visited to determine whether or not a group of smaller, decentralized projects can attain the same or similar benefits as the proposed regional facility. It may also be determined that there is no longer a need for treatment at this location. The HOA representative expressed concern over the possibility of a new pond for a number of reasons and suggested that any future proposed pond was likely to be opposed by residents. Alternatives to the pond will be explored.

40: Look at runoff problems from land to the west caused by grading done by the landowner, that is now causing road flooding and ice conditions (ask the North Hart Run HOA for details on the location).



LR-LR-0015:

Where applicable, Little Rocky Run HOA requested consideration of retrofitting the parking areas of some townhouses with porous paving/detention systems (similar to Providence Rain Garden system).

LR-LR-0004

#43 Downstream stream restoration is needed (Located on map just under #4 in 43). There are concerns over what type of project was being contemplated. A relatively small number of parcels (~30) are draining into the main stem of the Little Rocky without being treated. The options to be explored include treating the runoff at the outfall in the back of the neighborhood, but there are access issues and other site limitations at this location. Another option is to incorporate small stormwater management facilities in the neighborhood - tree-box filters, raingardens, infiltration trenches etc. A site visit will need to occur before a final strategy is developed. There are several similar locations throughout Lower Little Rocky where groups of parcels are untreated and will be addressed in a similar manner.

LR-LR-008:

#s 47, 49 and 50. This is a nice wooded area and would benefit from stream habitat and other improvements.

In LR-LR 0011:

#s 51, 52, 53, 54, 58: All are on a degraded creek, so they will be a high priority.

55: Union Mill Elementary has educational opportunities, so this would be a priority.

#60: Townhouse area – porous pavers for area (see note for project #15)

Ques. Re # 67: Is that property publicly owned?

LR-LR-0016

#82, 83: Union Mills neighborhood, there are concrete channels and no water quality treatment so this is a high priority.

#83, 84: Union Mills HOA is supportive of retrofit opportunities. The facilities are older. Trickle ditches need to be removed. Mike has witnessed visible pollution (oil, cleaning agents, etc.) ponding occurs in the facilities and is washed right into the stream. Filtering needs to be improved.

#86: New bridge on Lee Highway - -keep watch on design process since environmental issues (e.g. VDOT has been apprised of the Swamp Mallows there).

#87: Trash problem here – Health Department required cleanup and the “Friends of LRR” have cleaned it again.

#93: Note the culvert was replaced here.

#102: Monitoring information is needed.

#111: It is difficult to provide a forested buffer here since houses are already too close to stream (within 20 feet, so little room for a project).



Fairfax County Stormwater Planning Division

12000 Government Center Pkwy, Ste. 449 • Fairfax, VA 22035 • 703-324-5500, TTY 711

www.fairfaxcounty.gov/dpwes/watersheds



#118: Site has old swimming pools filled with soil and buried. Should they be removed? Is this property abandoned?

LR-LR 0015:

Question regarding # 134: Are there habitat issues there that can be addressed by enlarging the pond? The pond is in good shape now, so just need to clarify what will be achieved if the pond is enlarged or improved.

Non-numbered Comments:

In LR-LR-0007. Green Trails Homeowner's association has potential project location to be evaluated. A multi-use court which is slated to be revamped may provide an opportunity to address watershed objectives and will be investigated. If that's the case, they are open to working with the County to find a layout that benefits the community as well as the watershed. HOA has a proposal for a green roof to be constructed on top of a pavilion to replace the tennis courts (see handout provided by Jay at the meeting). There are opportunities for more low impact development approaches around that site if needed.

Little Rocky Run HOA area: Positive feedback received for potential locations in Little Rocky Run HOA. The HOA is willing to work with the county for projects within the HOA, which is most of Lower Little Rocky Run.

Compton Heights HOA mentioned that there were some locations that were missed that had potential. Need more information from the HOA.

There are no comments for Johnny Moore Creek since those representatives did not attend meeting.

Next Steps:

- 1) Comments are requested from the committee by May 22 by email
- 2) The next meeting was proposed for June 15 to review a ranked list of projects, but this may need to be changed because three committee members were not able to make this date.

The Little Rocky Run and Johnny Moore Creek Watersheds Management Plan:

The Little Rocky Run and Johnny Moore Creek Watersheds have experienced environmental degradation, mostly due to urbanization. A planning process initiated by Fairfax County is underway to improve the quality of the waterways and their watersheds. The Watershed Advisory Group (WAG) provides input to Fairfax County. The WAG members serve as liaisons between their respective communities and the project team. AMEC Inc. serves as the technical team lead and prepares watershed plan drafts and engineering studies and facilitates WAG and public meetings for the county. For more information please contact <Eric.Forbes@fairfaxcounty.gov> or visit <http://www.fairfaxcounty.gov/dpwes/watersheds/>

“The opinions represented herein do not necessarily represent those of Fairfax County or its agents.”



Fairfax County Stormwater Planning Division

12000 Government Center Pkwy, Ste. 449 • Fairfax, VA 22035 • 703-324-5500, TTY 711

www.fairfaxcounty.gov/dpwes/watersheds



To Contact Staff:

Karen Firehock, Public Involvement Coordinator, karenfirehock@virginia.edu, (434)975-6700, #222

Lynne Mowery, Project Manager, AMEC, lynne.mowery@amec.com, (703)488-3773

Eric Forbes, Ecologist, Fairfax County Stormwater Planning Division
Eric.Forbes@fairfaxcounty.gov, (703)324-5717

Fairfax County Watershed Website: <http://www.fairfaxcounty.gov/dpwes/watersheds/>
 Use this site for meeting dates, workshops and to read meeting summaries and reports.

Watershed Plans Comment Email Address: watersheds@fairfaxcounty.gov

Little Rocky Run and Johnny Moore Creek Watershed Advisory Committee					
May 18, 2009 Meeting					
LRR	JMC	Attended	Group	Name	Title
x		no	Westfields Golf Club	Tom Farris	Manager
x		yes	Friends of Little Rocky Run	Ned Foster	President
x	x	no	Occoquan Watershed Coalition	Jim Bonhivert	President
x	x	no	Springfield Supervisor Pat Herrity	Marlae Schnare	Staff
x		yes	Sully Supervisor Michael L. Frey	Meghan Kiefer	Staff
x	x	no	Clifton Horse Society	Jean Voss	President
x		yes	Little Rocky Run HOA	Jeff Hummel	President
x		no	Compton Village HOA	Joseph F. Cottone	President
x		yes	Green Trails HOA	Jay Hurst	President
x		yes	North Hart Run HOA	Sara Dyer	
	x	no	Cedar Knolls of Clifton HOA	Laurie Anderson	HOA rep
	x	alternate	Union Mills HOA	Gene Griffe	President
x		yes	Compton Heights HOA	William Ballou	Vice President

Staff and Guests Attending

Fairfax County Stormwater Management	Fred Rose	Engineer
Fairfax County Stormwater Management	Darold Burdick	Engineer
Fairfax County Stormwater Management	Eric Forbes	Ecologist and County Project Manager
AMEC Inc.	Lynne Mowery	Project Manager
AMEC Inc.	Hrushikesh Sandhe	Engineer
AMEC Inc.	Matt Breen	Engineer
AMEC Inc.	Karen Firehock	Public Involvement
Green Trails HOA	Kevin Morely	
Union Mills HOA	Mike Shipley	

Alternate
 Alternate



Fairfax County Stormwater Planning Division

12000 Government Center Pkwy, Ste. 449 • Fairfax, VA 22035 • 703-324-5500, TTY 711

www.fairfaxcounty.gov/dpwes/watersheds



Healthy Watersheds, Healthier Communities

Fairfax County Stormwater Planning Division

Meeting Summary for Johnny Moore Creek and Little Rocky Run Watershed Advisory Committee Meeting #4 Little Rocky Run HOA Recreation Center #3, February 22, 2010

Purpose:

The purpose of the meeting was to review the proposed project rankings for the two watersheds and to provide feedback. Watershed Advisory Group (WAG) members were asked to consider if the ranking was appropriate based on their local knowledge.

Project Schedule Overview:

Karen Firehock provided an overview of the schedule. After comments and final reviews are incorporated from this meeting, there will be one more WAG meeting to review the final draft watershed plan. The plan will be available for public comment for 30 days. This will occur simultaneous to other agency reviews of the plan. The public forum to review the final draft of watershed plan will likely be scheduled for June, 2010. The plan will be edited over the summer and presented to the Board of Supervisors (BOS) in fall 2010 for review and possible adoption. Ms. Firehock reminded the group that the projects in the plan would still need to be budgeted and would receive all requisite public review and notice before implementation.

Fred Rose provided a brief overview of the watershed planning process to date and assured everyone that the planning effort for Little Rocky Run (LRR) and Johnny Moore Creek (JMC) is in the final stretch and will be completed this year. Fred Wilkins, who is a project engineer with the county, was in attendance to participate in the planning process which will facilitate improved project implementation once the plan has been adopted by the BOS.

Mr. Rose explained that the delays in completing the final project list had to do with the need to create a consistent county-wide ranking system that allows all projects in each watershed to be compared. This took some time to develop and test but is now in place. Thirteen plans have been completed to date. The LRR and JMC plans are part of the second round of watershed plans.

A participant asked if, in light of recent county budget challenges, whether funds were protected and would definitely be available for plan implementation. Mr. Rose responded that there was a penny of the real estate tax that had been dedicated in the past to fund the County's stormwater management program. The program is now funded by a stormwater service district shown as a separate item on the real estate tax bill.

Another participant asked if projects had been deleted and for clarification concerning whether all the previous projects were still on the list. Mr. Rose explained that the original list of 120 projects had to be paired down to the top 80 projects. Mr. Breen noted that if a project costs less than \$80,000 it could be combined with another related project, so some projects had been collapsed into a project suite, but were not deleted. He explained that, as of now, there are a total of 79 projects, but four of those are regional ponds so the project list under consideration for the WAG and the county is actually only 75 projects.



Fairfax County Stormwater Planning Division

12000 Government Center Pkwy, Ste. 449 • Fairfax, VA 22035 • 703-324-5500, TTY 711

www.fairfaxcounty.gov/dpwes/watersheds



A participant asked for an example of a type of project that may have been removed from the list. Lynne Mowery explained that if a project did not yield a significant benefit for pollution removal or address a serious problem, then it could have been removed. One that had been removed was the multi-purpose court that was proposed by an HOA to become an area for water infiltration. It was removed because its current location does not allow it to treat a very large drainage area and it is not in a place where there is a significant problem that needs remediation.

Ms. Mowery noted that some projects were removed because the benefits accrued would be mitigated by the difficulty of implementation. A good example for this was for some stream channels where there is existing erosion but, due to the remote location within a woodland, a great deal of disturbance would be required to allow heavy machinery to access the site. In that case, more harm than good would occur in attempting to get to the site to remediate it. There were also some instances in which homeowners were not receptive to having a county stormwater project on their private property, so those projects also were removed from the list.

Presentation of Candidate Project Investigation and Ranking (for presentation content see slide show in documents section of project website)

Lynne Mowery provided an overview of how the projects were investigated and ranked. She referenced the “Attachment Seven, Scores and Rankings Spreadsheet” that was emailed to the WAG and also made available at the meeting. She explained that the “source indicator” refers to the cause of the problem, whereas the “impact indicator” refers to the effect of the project, or how well it mitigates or eliminates the problem. The engineering team has calculated the pollution removal potential for each project. Those that scored a five had a high potential to remove pollution, while those that scored a one, had a low potential. She indicated that the top 20 best ranked projects had all scored a five for pollution removal or problem mitigation of total suspended solids (TSS), total nitrogen (TN) or total phosphorus (TP).

Several participants asked whether and how cost was factored into the ranking system. The engineering team explained that they were instructed to evaluate projects for this round of ranking solely on their ability to address an environmental problem as well as the practicality for doing so, as explained earlier. However, county staff noted that the projects will be evaluated for cost in the next step of the ranking process. A few participants responded that they felt cost should be considered now in case projects that are cost prohibitive would still make the final list even though they may be too expensive. County staff explained that it was not practical to fully calculate costs for every possible project and so they had instructed the engineering team to evaluate that once the final list had been proposed. It is possible that some projects could then drop down or move up on the list due to cost.

Mr. Breen of the engineering team clarified that it was not accurate to say that cost was not considered at all in the first round of evaluation. He explained that the engineering team did apply their existing professional knowledge of likely costs when they evaluated whether or not projects would likely be feasible and practical. Mr. Breen added that the feasibility of doing a project was an important factor in the ranking process. For example, those ponds that are owned by the county tended to score a ranking of five since it is easy to get access to add additional pollution mitigation features on the county’s own property.

Ms. Mowery explained that 20 percent of the project’s score was added if the project was located in the headwaters of the stream since it had a high potential for positive impacts the higher up in the watershed it was located. Those projects that are located in the headwaters can mitigate sources and stressors of stream



Fairfax County Stormwater Planning Division

12000 Government Center Pkwy, Ste. 449 • Fairfax, VA 22035 • 703-324-5500, TTY 711

www.fairfaxcounty.gov/dpwes/watersheds



problems that cause cumulative impacts downstream. For example, reducing the source of the problem, such as high flow velocities, can negate the need to repair eroding stream banks lower down in the watershed since the source of the problem has been abated. Staff also responded to a question that the degree of pollution removal, such as how much phosphorus could be removed, also was a factor in the ranking.

Review of Ranked Projects:

The group broke up to review the three watershed areas and the comments were noted on flip charts. Project #s refer to project # on maps found on the watershed web site at:

http://www.fairfaxcounty.gov/dpwes/watersheds/johnnymoorecreek_docs.htm

Upper Little Rocky Run:

Representatives from this watershed expressed concern for the amount of debris that regularly piles up in the dry ponds located behind the Union Mills shopping center. Any conceptual level project design should include some measure to reduce floatables to these ponds if possible. Staff from AMEC researched this concern and let the representatives know that project LR9112 does include litter control at the shopping center.

Lower Little Rocky Run:

Three participants expressed concern about the Regional Pond shown on the map at Green Trails neighborhood. AMEC staff explained that that the regional pond was included as a project in order to compare the benefits to suggested alternatives. Green Trails HOA would like assurance that the regional pond will not be included as a project in the final plan.

North Hart Run HOA provided information on two areas of concern:

- Compton Road between Paradise Mill and Bay Valley - overland flow overtops road creating icy, dangerous conditions where several car accidents have occurred. This is likely due to recent re-grading of the adjacent property and an inadequate ditch along the road that regularly fills with debris causing overflows.
- An area along Little Rocky Run south of Laura Ratcliffe Court seems to be “wet and mucky,” perhaps due to drainage problems.

Johnny Moore Creek:

There was concern expressed about flooding near project JM9500.

There was a question about whether projects at road crossings fall under VDOT jurisdiction. Eric Forbes responded that county staff work with VDOT to address problems but they have to clearly delineate who is responsible when problems are within the VDOT right of way or a VDOT-maintained culvert.

There was positive feedback that the #1 ranked project in Johnny Moore Creek was the JM9202 stream restoration.



Next Steps:

1. Comments were requested from the committee by March 1, 2010.
2. AMEC will incorporate comments and prepare the draft watershed plan.
3. Next WAG meeting in May to discuss the draft plan and plan for public Watershed Plan Forum to be held in summer 2010 (likely in June).

Meeting Attachments:

- Watershed Management Plan on Project Ranking
- Watershed Scores and Rankings (attachment 7)
- Watershed Maps

Meeting attendees are listed on the page following.

The Little Rocky Run and Johnny Moore Creek Watersheds Management Plan:

The Little Rocky Run and Johnny Moore Creek Watersheds have experienced environmental degradation, mostly due to urbanization. A planning process initiated by Fairfax County is underway to improve the quality of the waterways and their watersheds. The Watershed Advisory Group (WAG) provides input to Fairfax County. The WAG members serve as liaisons between their respective communities and the project team. AMEC Inc. serves as the technical team lead and prepares watershed plan drafts and engineering studies and facilitates WAG and public meetings for the county. For more information please contact <Eric.Forbes@fairfaxcounty.gov> or visit <http://www.fairfaxcounty.gov/dpwes/watersheds/>

“The opinions represented herein do not necessarily represent those of Fairfax County or its agents.”



To Contact Staff:

Karen Firehock, Public Involvement Coordinator, karenfirehock@virginia.edu, (434)975-6700, #222

Lynne Mowery, Project Manager, AMEC, lynne.mowery@amec.com, (703)488-3773

Eric Forbes, Ecologist, Fairfax County Stormwater Planning Division

Eric.Forbes@fairfaxcounty.gov, (703)324-5717

Fairfax County Watershed Website: <http://www.fairfaxcounty.gov/dpwes/watersheds/>

Use this site for meeting dates, workshops and to read meeting summaries and reports.

Watershed Plans Comment Email Address: watersheds@fairfaxcounty.gov

Little Rocky Run and Johnny Moore Creek Committee Meeting 2/22/2010					
LRR	JMC	Attended	Group	Name	Title
x		no	Westfields Golf Club	Colin Gooch	Manager (acting)
x		yes	Friends of Little Rocky Run	Ned Foster	President
x	x	no	Occoquan Watershed Coalition	Jim Bonhivert	President
x	x	no	Springfield Supervisor Pat Herrity	Marlae Schnare	Staff
x		yes	Sully Supervisor Michael L. Frey	Meghan Kiefer	Staff
x	x	yes	Clifton Horse Society	Beth Giorgiana	President
x		yes	Little Rocky Run HOA	Jeff Hummel	President
x		no	Compton Village HOA	Joseph F. Cottone	President
x		yes	Green Trails HOA	Jay Hurst	Representative
x		yes	North Hart Run HOA	Sara Dyer	Representative
	x	yes	Cedar Knolls of Clifton HOA	Laurie Anderson	HOA rep
	x	alternate	Union Mills HOA	Gene Griffe	President
x		no	Compton Heights HOA	William Ballou	Vice President

Staff and Guests Attending

Fairfax County Stormwater Management	Fred Rose	Engineer, Chief, Stormwater Planning
Fairfax County Stormwater Management (Implementation Branch)	Fred Wilkins	Engineer
Fairfax County Stormwater Management	Eric Forbes	Project Manager
Fairfax County Stormwater Management	Heather Ambrose	Ecologist
AMEC Inc.	Lynne Mowery	Project Manager
AMEC Inc.	Matt Breen	Engineer
AMEC Inc.	Thomas Williams	Engineer
AMEC Inc.	Karen Firehock	Public Invol.
Green Trails HOA	Kristin Girardin	President
Green Trails HOA	Kevin Morely	
Union Mills HOA	Mike Shipley	

Guest

Alternate

Alternate



Fairfax County Stormwater Planning Division

12000 Government Center Pkwy, Ste. 449 • Fairfax, VA 22035 • 703-324-5500, TTY 711

www.fairfaxcounty.gov/dpwes/watersheds



Healthy Watersheds, Healthier Communities

Fairfax County Stormwater Planning Division

**Meeting Summary for Johnny Moore Creek and Little Rocky Run
Watershed Advisory Committee Meeting #5
Little Rocky Run HOA Recreation Center #3,
June 29, 2010**

Purpose:

The purpose of the meeting was to review the format of the draft watershed plan, to explain how the projects are proposed to be considered and possibly implemented and to thank the committee for their dedication over several years. Watershed Advisory Group (WAG) members were asked to review projects proposed for the watersheds and to provide any further comments by July 15, 2010 in order to include them in the version to be presented at the fall draft plan public forum.

Thanks for Service:

Karen Firehock opened the meeting by thanking the committee for the dedication, insights and ideas and for their patience in seeing the plan through to its completion. She then turned the meeting over to Fred Rose of Fairfax County's Stormwater Management Division, who thanked the committee for their work and commitment. He reminded everyone that this is not the end but the beginning. After the board adopts the plan, the real work begins to implement the projects designed to improve the watershed's health and to prevent the surface waters from declining in the future. He congratulated the group for making it to the final phase and reminded everyone that this project is part of a larger effort to restore and better manage all of the county's watersheds to help contribute to a cleaner Chesapeake Bay.

Presentation of the Watershed Plan:*

Lynne Mowery presented the draft watershed plan's organizational structure and key components. She noted that while the plan is extensive, the WAG has already reviewed and commented on most of the chapters, which were shared in earlier meetings. Therefore, if WAG members are short on time they do not have to re-read the entire plan. She suggested that WAG members should focus their review on chapter five as it contains the project fact sheets. She explained that every project that was selected for early implementation (within the first 10 year time period) has a detailed fact sheet. Projects were first prioritized based on their benefits for water quality. A subset of those projects were chosen based on this analysis. This was followed by a cost benefit analysis, resulting in the list proposed in the draft watershed plan.

Next, Eric Forbes provided an overview of the process to date and a reminder of the major project milestones. He described the process for moving from assessment of the watersheds' conditions to development of projects and ranking of projects to ensure the most effective solutions were included in the final plan. He noted that 150 projects were originally proposed and these were pared down to a candidate list of the best potential projects. Field reconnaissance was conducted to evaluate the projects and this helped the team to pare down the larger list of projects. Additional field visits and further modeling were then conducted to arrive at the final list. The cost benefit analysis helped the team to determine which projects to propose for the first 10 year block of time. He explained that those projects not included in the first ten years were still part of the plan, but they could be changed as the county determines the effectiveness of the first half of the watershed plan's implementation, as



Fairfax County Stormwater Planning Division

12000 Government Center Pkwy, Ste. 449 • Fairfax, VA 22035 • 703-324-5500, TTY 711

www.fairfaxcounty.gov/dpwes/watersheds



conditions change in the watershed, or as new technologies or ideas are proposed for addressing the watershed's issues. He also noted that regulations can and will change over time, and new regulations may require changes to how the plan is implemented.

Mr. Forbes described the process for moving the plan to adoption. In addition to review by the WAG, there is also a review by county agencies such as the Park Authority and the Department of Planning and Zoning to ensure that the projects are agreed upon and that there are no conflicts with other agency's plans. There also will be additional internal review and edits by the county that will be made prior to presenting the plan to the Board of Supervisors for review and adoption.

Ms. Firehock concluded the presentation by reviewing the options for commenting on the plan. She asked the committee to please provide their comments on the plan by July 15 so that there would be adequate time to incorporate any needed changes into the plan prior to the public forum. She noted that the committee also can comment during the public review process in the fall, but the team would like to ensure that the committee's concerns or corrections are included in the draft that is shared with the public. The public comment period will be open for 30 days.

Ms. Firehock noted that the public forum was rescheduled for September to avoid conflicts with vacation schedules and to increase the likelihood that the public could attend. However, the forum's date for September cannot yet be nailed down because both the high school and middle school are still revising their fall calendars so they are not yet able to confirm a date. It is hoped that they will be able to confirm the date within the next few weeks.

Ms. Firehock explained that every committee member will be asked to help recruit participation from their HOAs and other interested civic groups. Once the date is set, members will receive a flyer to distribute and to post at places where the community will see them, such as community centers, the library, grocery stores or other places visible to the public. Eric Forbes also noted that everyone whose property includes or adjoins a potential project will receive a post card inviting them to the draft plan forum. Ms. Firehock added that this mailing would not include everyone in the watershed, so it still is very important that the WAG promote the event to their constituents.

A committee member asked how the new emphasis on cleaning up the Chesapeake Bay though new mandatory regulations could affect the committee process. County staff responded that since the county has already begun improving their watershed analysis, management and restoration projects voluntarily, the county should be in a good position once new regulations are enacted. Staff noted that Fairfax County was setting an example for what should be done and that the county may become a model for other localities that need to improve watershed management. Regardless of what standards are set, the county has done a great deal of analysis through the watershed planning and implementation process so the county will be able to plug their watershed projects into a model and show how they are helping to meet Chesapeake Bay goals for nutrient reduction. County staff offered the caveat that no one knows for sure what the new regulations will require, or whether they will require more work by the county. County staff also noted that they have been very well aware that new regulations were likely and the current watershed plans have sought to anticipate these changes, so regardless of what happens within the new regulatory framework, the county will be in a good position to participate fully in the bay cleanup.

Participants then reviewed maps displayed and project fact sheets and asked questions of the team. Participants were again thanked for their service and rewarded with refreshments. Staff reminded them to send any additional comments by July 15 and thanked them again for their participation.

*A copy of the watershed plan presentation is appended to this meeting summary, so only a few discussion highlights were included herein.

Next Steps:

- 1) Comments on project fact sheets or the watershed plan requested from the committee by July 15, 2010.
- 2) AMEC will incorporate comments into the draft watershed plan.
- 3) Public forum scheduled for September and flyers mailed to WAG to help recruit participants.

Meeting Attachments:

- Watershed Management Plan Presentation
- Watershed Plan (posted to project website)

The Little Rocky Run and Johnny Moore Creek Watersheds Management Plan:

The Little Rocky Run and Johnny Moore Creek Watersheds have experienced environmental degradation, mostly due to urbanization. A planning process initiated by Fairfax County is underway to improve the quality of the waterways and their watersheds. The Watershed Advisory Group (WAG) provides input to Fairfax County. The WAG members serve as liaisons between their respective communities and the project team. AMEC Inc. serves as the technical team lead and prepares watershed plan drafts and engineering studies and facilitates WAG and public meetings for the county. For more information please contact <Eric.Forbes@fairfaxcounty.gov> or visit <http://www.fairfaxcounty.gov/dpwes/watersheds/>

“The opinions represented herein do not necessarily represent those of Fairfax County or its agents.”

To Contact Staff:

Karen Firehock, Public Involvement Coordinator, karenfirehock@gmail.com, (434)975-6700, #222

Lynne Mowery, Project Manager, AMEC, lynne.mowery@amec.com, (703)488-3773

Eric Forbes, Ecologist, Fairfax County Stormwater Planning Division Eric.Forbes@fairfaxcounty.gov, (703)324-5717

Fairfax County Watershed Website: <http://www.fairfaxcounty.gov/dpwes/watersheds/>

Use this site for meeting dates, workshops and to read meeting summaries and reports.

Watershed Plans Comment Email Address: watersheds@fairfaxcounty.gov

Meeting attendees are listed on the following page.

Little Rocky Run and Johnny Moore Creek Committee Meeting 6/29/2010					
LRR	JMC	Attended	Group	Name	Title
x		yes	Friends of Little Rocky Run	Ned Foster	President
x	x	no	Springfield Supervisor Pat Herrity	Marlae Schnare	Staff
x		yes	Sully Supervisor Michael L. Frey	Meghan Kiefer	Staff
x	x	no	Clifton Horse Society	Beth Giorgiani	President
x		yes	Little Rocky Run HOA	Jeff Hummel	President
x		no	Compton Village HOA	Joseph F. Cottone	President
x		no	Green Trails HOA	Jay Hurst	HOA Representative
x		yes	North Hart Run HOA	Sara Dyer	HOA Representative
	x	yes	Cedar Knolls of Clifton HOA	Laurie Anderson	HOA Representative
	x	yes	Union Mills HOA	Mike Shipley	Representative
x		no	Compton Heights HOA	William Ballou	Vice President

Staff and Guests Attending

Fairfax County Stormwater Planning	Fred Rose	Engineer, Chief, Stormwater Planning
Fairfax County Stormwater Planning	Darold Burdick	Engineer
Fairfax County Stormwater Planning	Eric Forbes	Project Manager
Fairfax County Stormwater Planning	LeAnne Astin	Ecologist
Fairfax County Stormwater Planning	Heather Ambrose	Ecologist
Fairfax County Stormwater Planning	Fred Wilkins	Engineer
AMEC Inc.	Lynne Mowery	Project Manager
AMEC Inc.	Hrushikesh Sandhe	Engineer
AMEC Inc.	Thomas Williams	Engineer
AMEC Inc.	Karen Firehock	Public Involvement

Healthy Watersheds, Healthier Communities

Fairfax County Stormwater Planning Division

**Meeting Summary for Johnny Moore Creek and Little Rocky Run
Draft Watershed Plan Forum
Centreville High School
September 16, 2010**

Purpose:

The purpose of the meeting was to present the final draft of the watershed plan and solicit community input on proposed projects. Participants were welcomed by Supervisors Frey and Herrity. Staff presented a watershed planning primer and the contents of the watershed plan.

Following are comments received during the breakout sessions for Johnny Moore Creek and Little Rocky Run upper and lower portions. The public comment period remains open until October 16, 2010. Staff at the breakout sessions spent most of their time answering questions about the projects proposed. The comments below reflect any insights or recommendations that the community would like the county to consider.

Little Rocky Run Upper

LR9521 - Project is wonderful!

LR9525 – Near this project, a citizen believes that a waterline was constructed approximately 18 months ago. The site has never been stabilized: the trail is in disrepair, the silt fence has fallen into the stream, and the pipe has been crushed and abandoned. It was recommended that citizen contact Fairfax County about this issue.

LR9801 - This site next to Lee Highway was identified as having trash and junk storage problems by WAG members. The proposed non-structural project is to provide targeted education to the property owner. The landowner noted that it has been difficult to keep this site free of debris for several reasons. First, there is an apartment building that backs up to the property and residents throw trash, mattresses and other waste onto the land. Efforts to speak to management of that building have yielded no improvements. Second, there is a ditch that has been blocked and prior entrances onto the property have also been blocked. These obstructions cause water in the ditch to overflow across the property and to carry trash into the stream. VDOT is supposed to make some road improvements on Lee Highway and hopefully they will address the blocked ditch as part of that effort. The landowner would like to know more about how the county can assist with this problem. The landowner has spent a great deal of their own money hauling out waste dumped illegally by the public onto their land.

Little Rocky Run Lower

LR9101 – Pond retrofit is a great idea.

LR9514 – Union Mill Elementary School is right next to this project on the Little Rocky Run tributary. The school plans a building expansion which may impact water quality. The participants wanted to know how the school's



Fairfax County Stormwater Planning Division

12000 Government Center Pkwy, Ste. 449 • Fairfax, VA 22035 • 703-324-5500, TTY 711

www.fairfaxcounty.gov/dpwes/watersheds



the expansion impact watershed protection and planning. They also asked if there is coordination with the public schools. The county is coordinating with the public schools and seeks to implement projects on school sites whenever possible and necessary for stormwater management.

Buffering projects along streams in this watershed would be great!

A question about Stormwater Pond WP0283 was raised, however no project is planned for this facility. The question was whether or not the pond could be converted to a dry pond. A discussion about the hurdles arose, including the need to expand/change the footprint (facility was confirmed to be on-line after the meeting) and it was discussed that wet ponds achieve higher design pollutant removal efficiencies than dry ponds.

Johnny Moore Creek

JM9500 – This is a great location for a BMP/LID measure. Numerous trees have fallen into the creek downstream of JM9500 project site due to the eroding streambanks. There is severe undercutting of the streambanks along this section of the creek.

JM9201 – The proposed measure is a great idea and will help to address the unstable streambanks in this area.

JM9400 – This project should be a top priority for the county. The problems here pose a major public safety problem and need to be addressed as soon as possible. A big ditch is continuing to erode the roadside, creating a very dangerous situation.

JM9201 – Hikers and horse riders have a difficult time following the trail across the stream in this area due to the steep and eroding streambanks.

JM9400, JM8801, JM9201, JM9500, JM8800, JM9200 – These projects will affect hiking/horse trails - Coordinate with Northern Virginia Regional Parks and the Clifton Horse Society.

JM9200 – There are concerns about the impacts of establishing access to the stream restoration project site due to its remote location.

Comment not related to existing project:

Near 13724 Balmoral Greens Avenue there is a storm drain that flows into a settling pond which overflows and is eroded around the cement drain. This site collects all the water from Fairfax County Parks Cannon Mound. No vegetation is in the settling pond.

General questions

What is the Fairfax County Golf Course at the top of the watershed doing to manage their runoff? The water in the stream at the bottom (south) of the golf course appears to be colored green from the runoff. Is the golf course spraying something green on the land? (Note: This is likely due to excessive use of fertilizers.)

How do the proposed stormwater management projects correspond and coordinate with Master Plan requirements specified for the Johnny Moore Community Planning Sector?

How long will the proposed project list be relevant? Will the projects need to be revised every five years or so?

Does the County plan to approach community groups, such as schools, scouts, and local organizations, to assist with implementation? Local citizens would like the County to explore this option as a way to save money on implementation.

Meeting Attachments:

- Watershed Management Plan Presentations
- Watershed Plan (posted to project website)

The Little Rocky Run and Johnny Moore Creek Watersheds Management Plan:

The Little Rocky Run and Johnny Moore Creek Watersheds have experienced environmental degradation, mostly due to urbanization. A planning process initiated by Fairfax County is underway to improve the quality of the waterways and their watersheds. The Watershed Advisory Group (WAG) provides input to Fairfax County. The WAG members serve as liaisons between their respective communities and the project team. AMEC Inc. serves as the technical team lead and prepares watershed plan drafts and engineering studies and facilitates WAG and public meetings for the county. For more information please contact <Eric.Forbes@fairfaxcounty.gov> or visit <http://www.fairfaxcounty.gov/dpwes/watersheds/>

“The opinions represented herein do not necessarily represent those of Fairfax County or its agents.”

To Contact Staff:

Karen Firehock, Public Involvement Coordinator, karenfirehock@gmail.com, (434)975-6700, #222

Lynne Mowery, Project Manager, AMEC, lynne.mowery@amec.com, (703)488-3773

Eric Forbes, Ecologist, Fairfax County Stormwater Planning Division Eric.Forbes@fairfaxcounty.gov, (703)324-5717

Fairfax County Watershed Website: <http://www.fairfaxcounty.gov/dpwes/watersheds/>

Use this site for meeting dates, workshops and to read meeting summaries and reports.

Watershed Plans Comment Email Address: watersheds@fairfaxcounty.gov