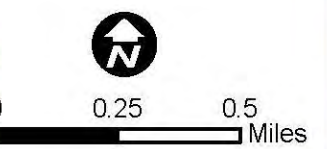
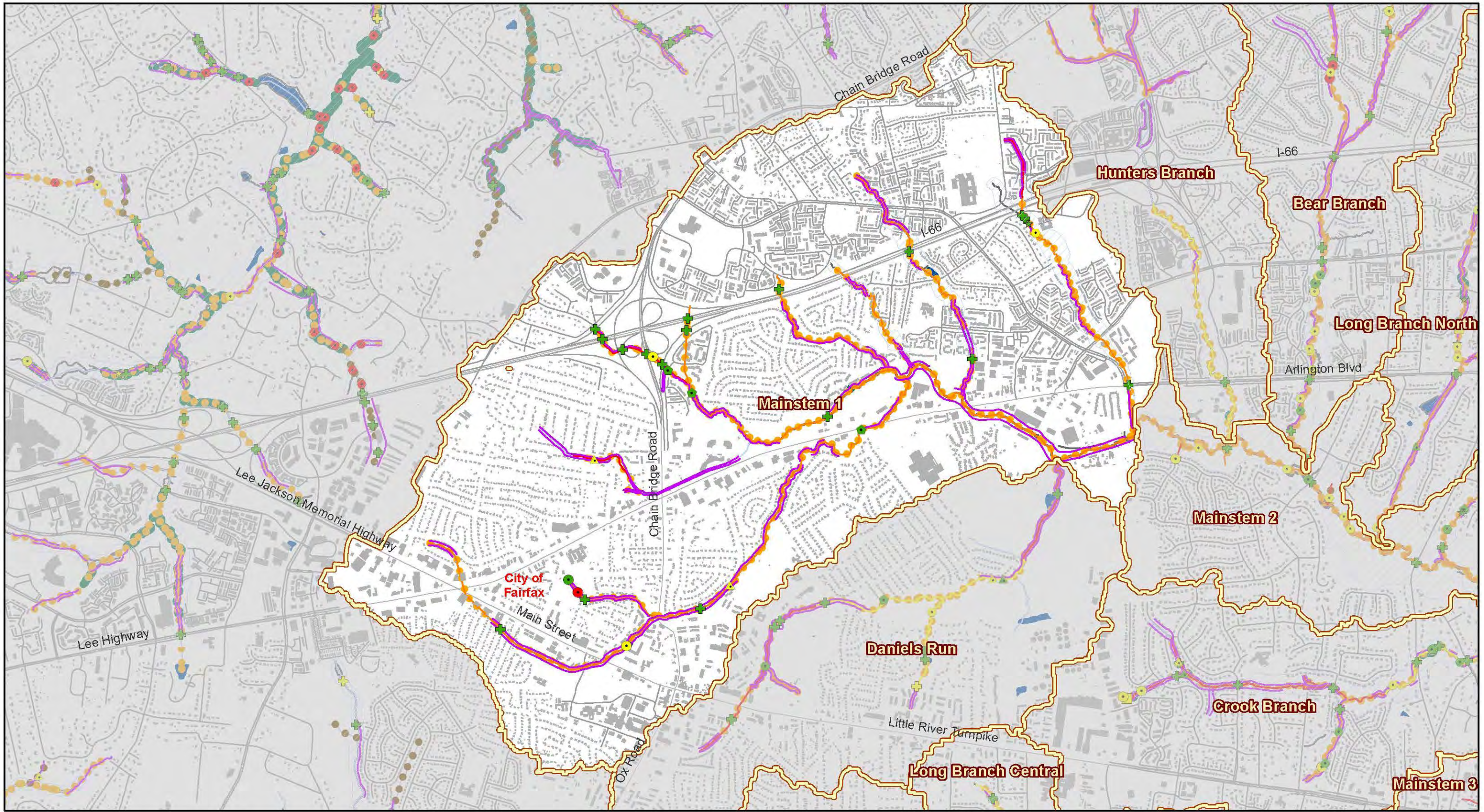


0 0.25 0.5 Miles

- | | | | |
|---------------------|-----------------------|----------------------|---|
| WMA Boundary | Regional Ponds | Subarea | MSMD Flooding/Drainage Complaints |
| 303d Listed Streams | Constructed | Quantity and Quality | STMDRN; SWM/BMP |
| Stormnet Facilities | Planned | Quantity | Public Identified Problem Areas 2003 - 2006 |
| Stormnet Arcs | | | |
| Parcels | | | |

Map 2-21
Stormwater Infrastructure Map

Mainstem 1



Obstruction Impact	Dump Site Impact	Pipe Impact	Ditch Impact	Utility Impact	Crossing Impact	Head Cut Height
Minor to Moderate	Minor to Moderate	Minor to Moderate	Minor to Moderate	Minor to Moderate	Minor to Moderate	0.5' - 1.0'
Moderate to Severe	Moderate to Severe	Moderate to Severe	Moderate to Severe	Moderate to Severe	Moderate to Severe	1' - 2'
Severe to Extreme	Severe to Extreme	Severe to Extreme	Severe to Extreme	Severe to Extreme	Severe to Extreme	>2'

Habitat Rating			CEM Category	
Excellent	Fair	Very Poor	CEM 2 - Incising	CEM 3 - Widening
Good	Poor	Unassessed		

Resource Protection Area (RPA)	Lakes and Ponds	Deficient Buffer	Erosion
Resource Protection Area (RPA)	Lakes and Ponds	Deficient Buffer	Erosion
WMA Boundary			

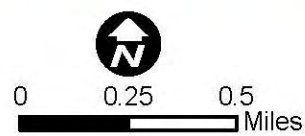
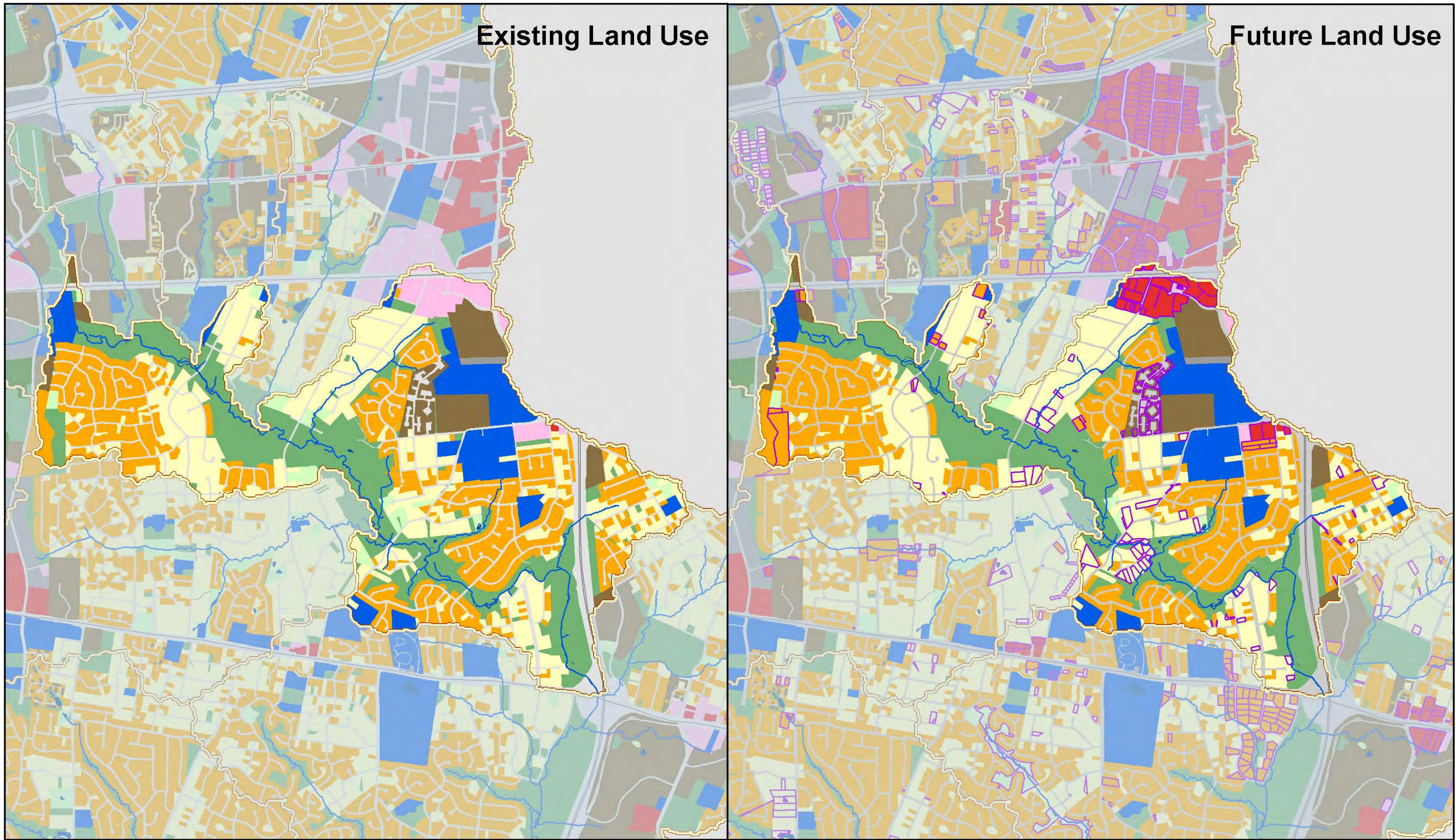
Map 2-22

Stream Condition Map

Mainstem 1

Existing Land Use

Future Land Use



Land Use

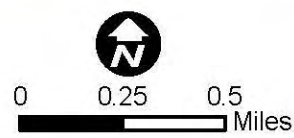
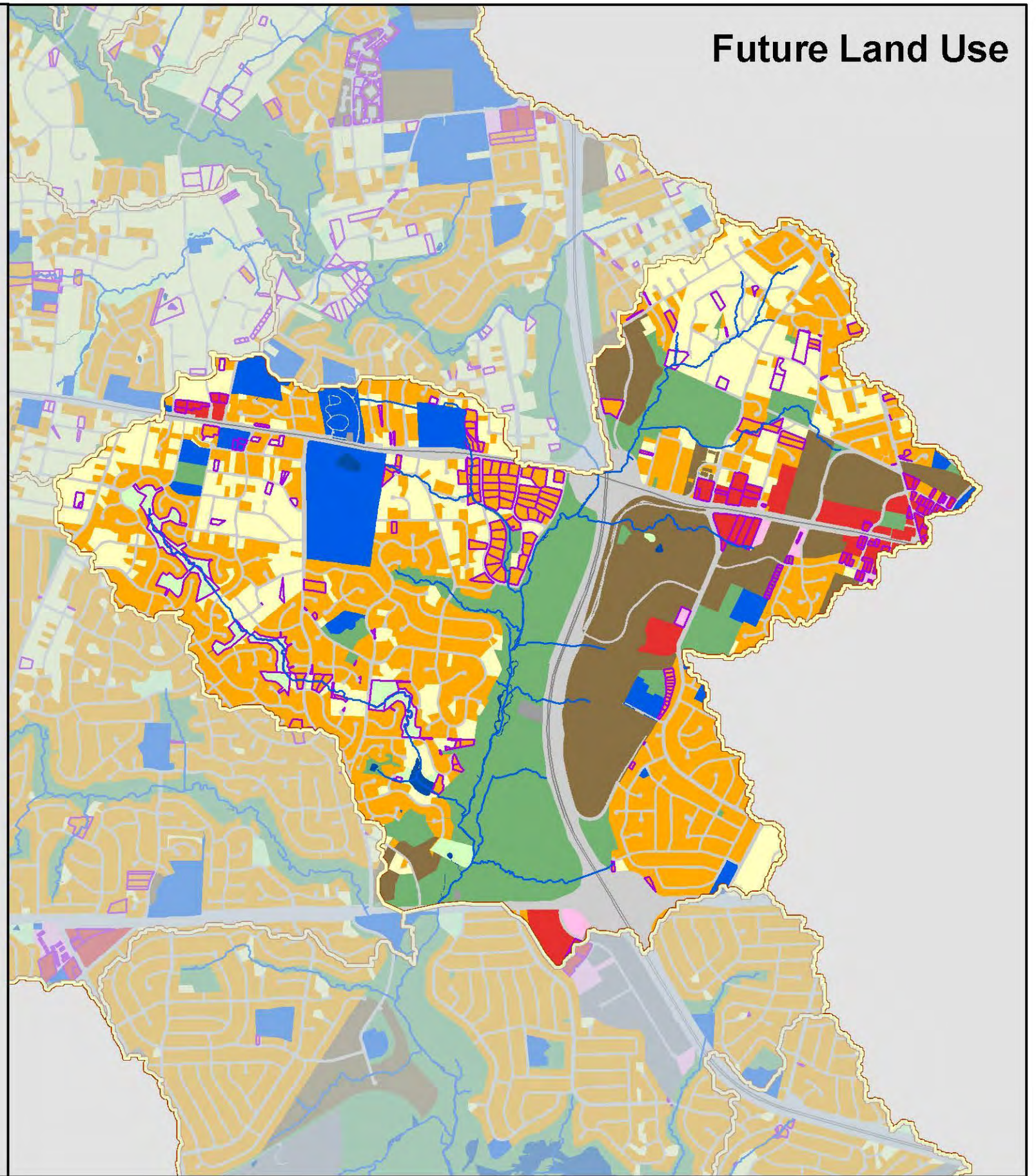
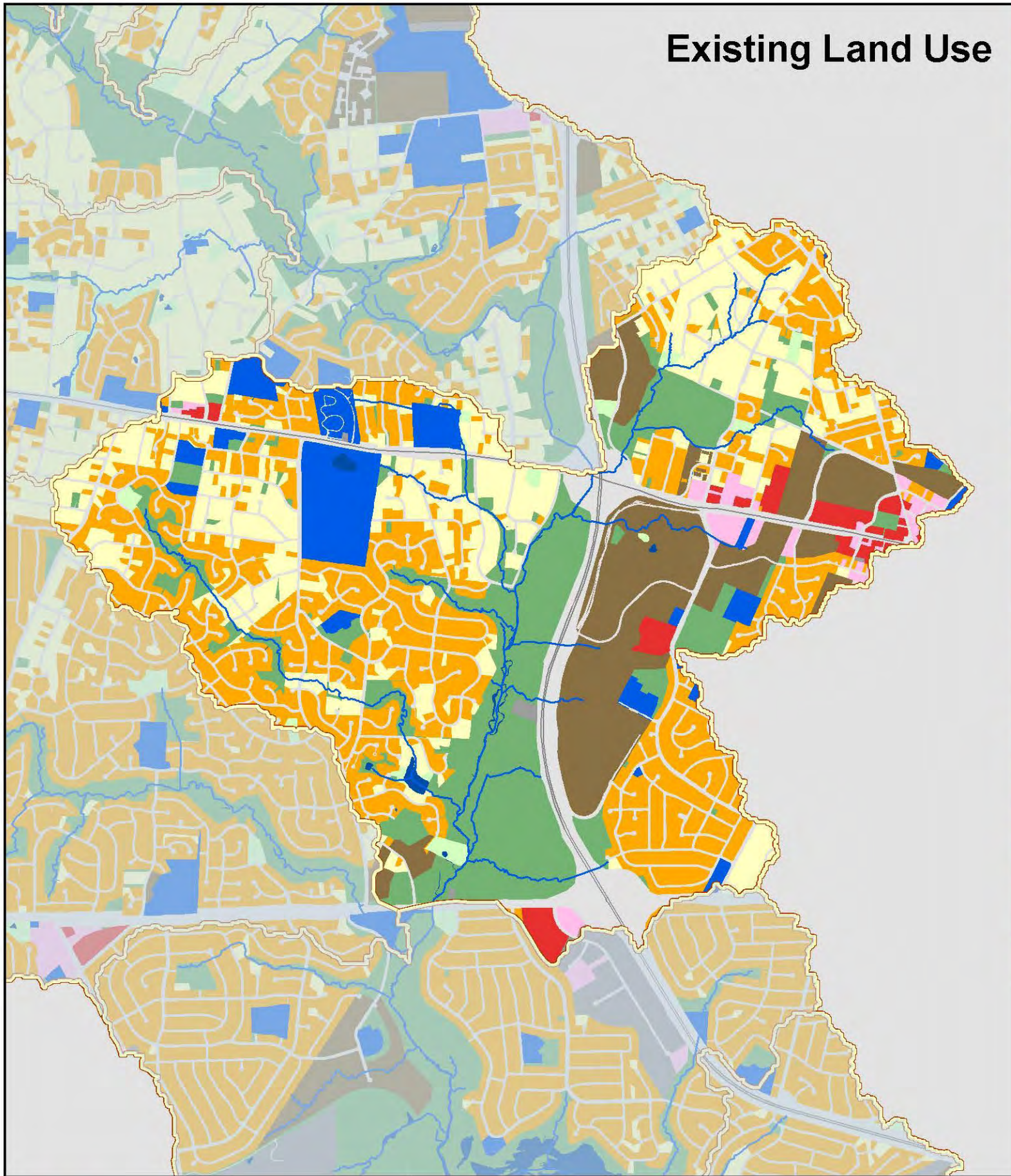
- | | | | |
|--------------------------|---------------------------|----------------------------|--------------------|
| Estate Residential | High Intensity Commercial | Low Density Residential | Open Space |
| Golf Course | Industrial | Low Intensity Commercial | Transportation |
| High Density Residential | Institutional | Medium Density Residential | Water |
| | | | WMA Boundary |
| | | | Change in Land Use |

Map 2-23

Land Use Map
Mainstem 2

Existing Land Use

Future Land Use



Land Use

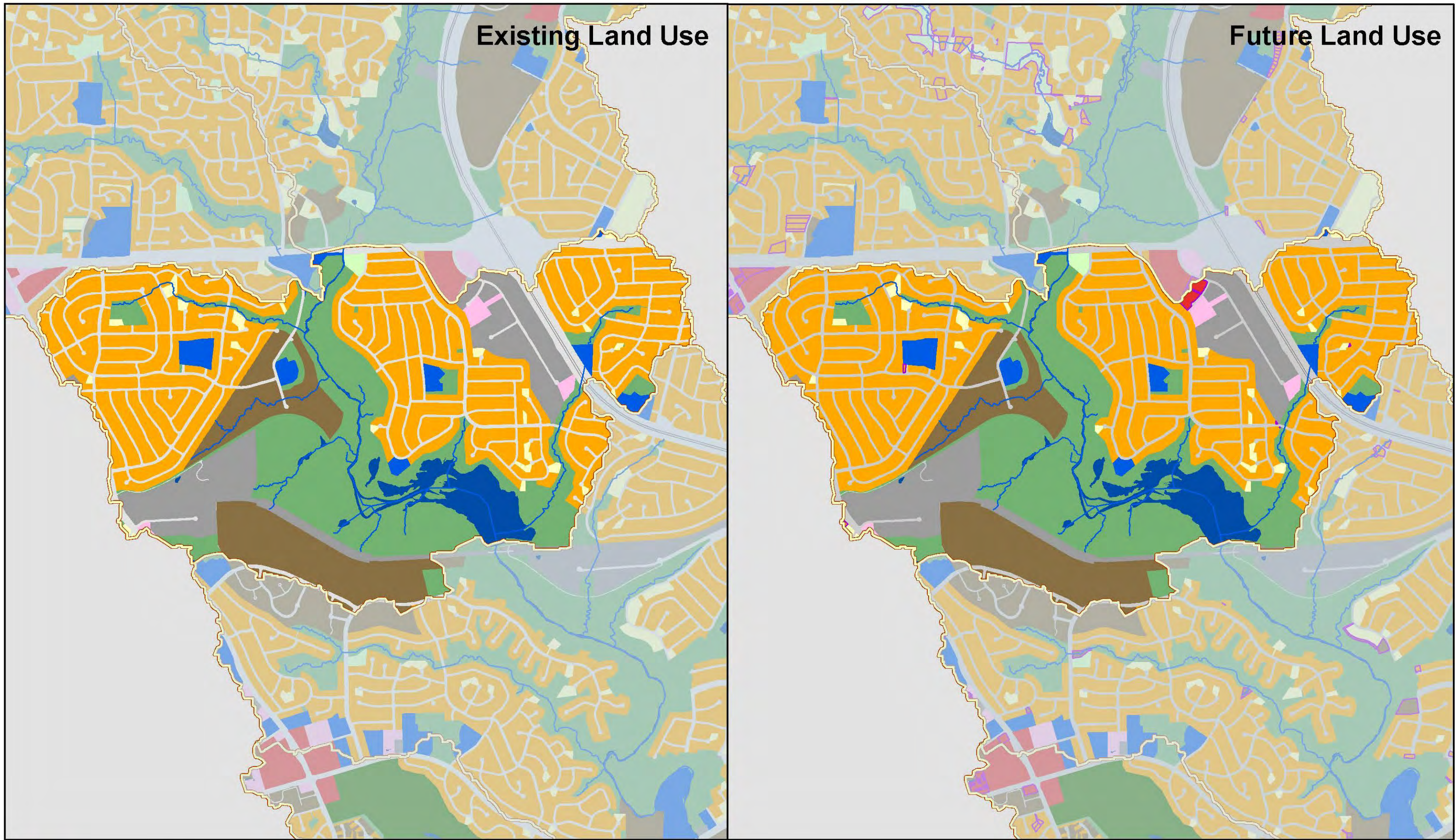
- | | | | | |
|--------------------------|---------------------------|----------------------------|----------------|--------------------|
| Estate Residential | High Intensity Commercial | Low Density Residential | Open Space | WMA Boundary |
| Golf Course | Industrial | Low Intensity Commercial | Transportation | Change in Land Use |
| High Density Residential | Institutional | Medium Density Residential | Water | |

Map 2-24

Land Use Map
Mainstem 3

Existing Land Use

Future Land Use

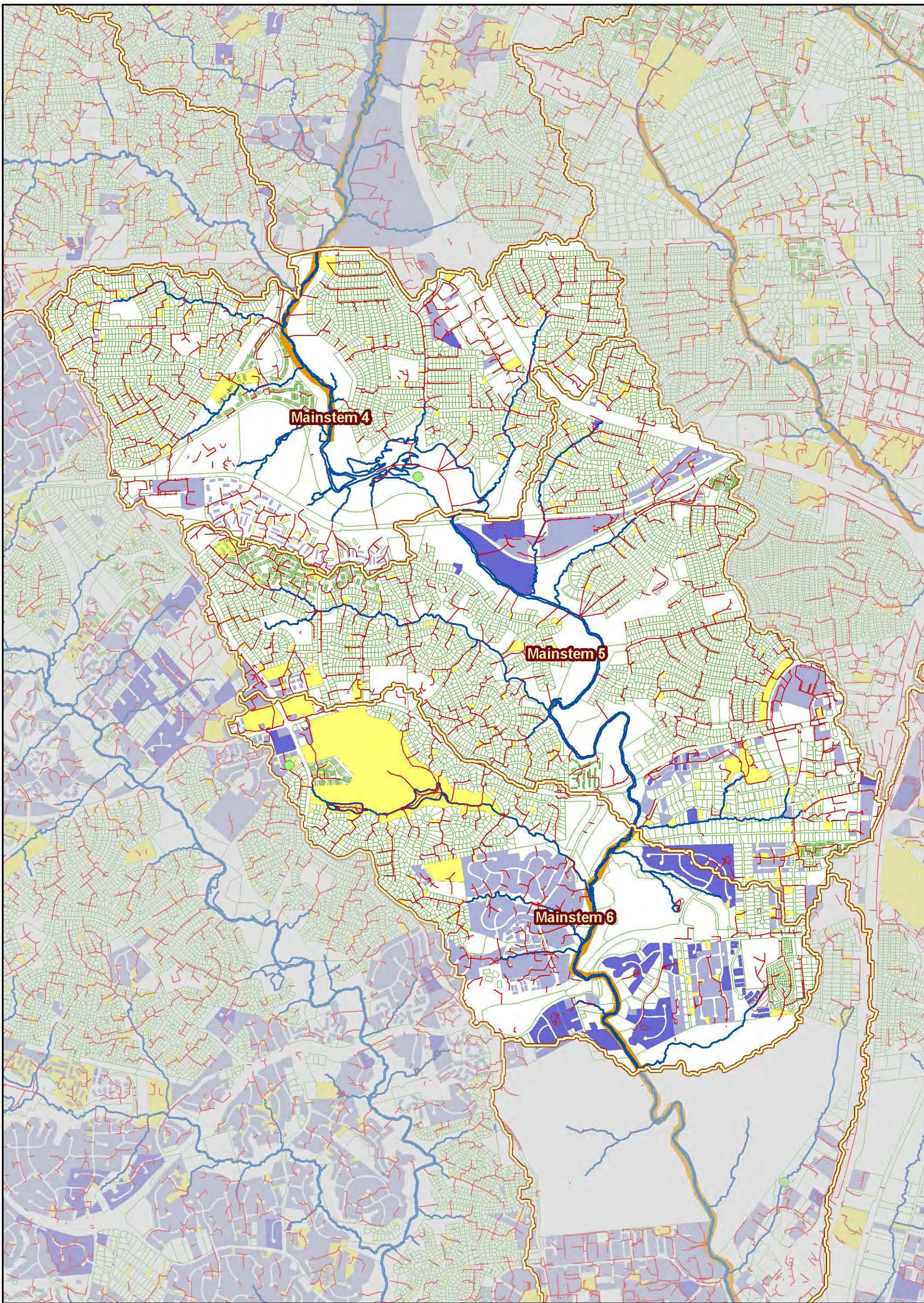


Land Use

- | | | | | |
|--------------------------|---------------------------|----------------------------|----------------|--------------------|
| Estate Residential | High Intensity Commercial | Low Density Residential | Open Space | WMA Boundary |
| Golf Course | Industrial | Low Intensity Commercial | Transportation | Change in Land Use |
| High Density Residential | Institutional | Medium Density Residential | Water | |

Map 2-25

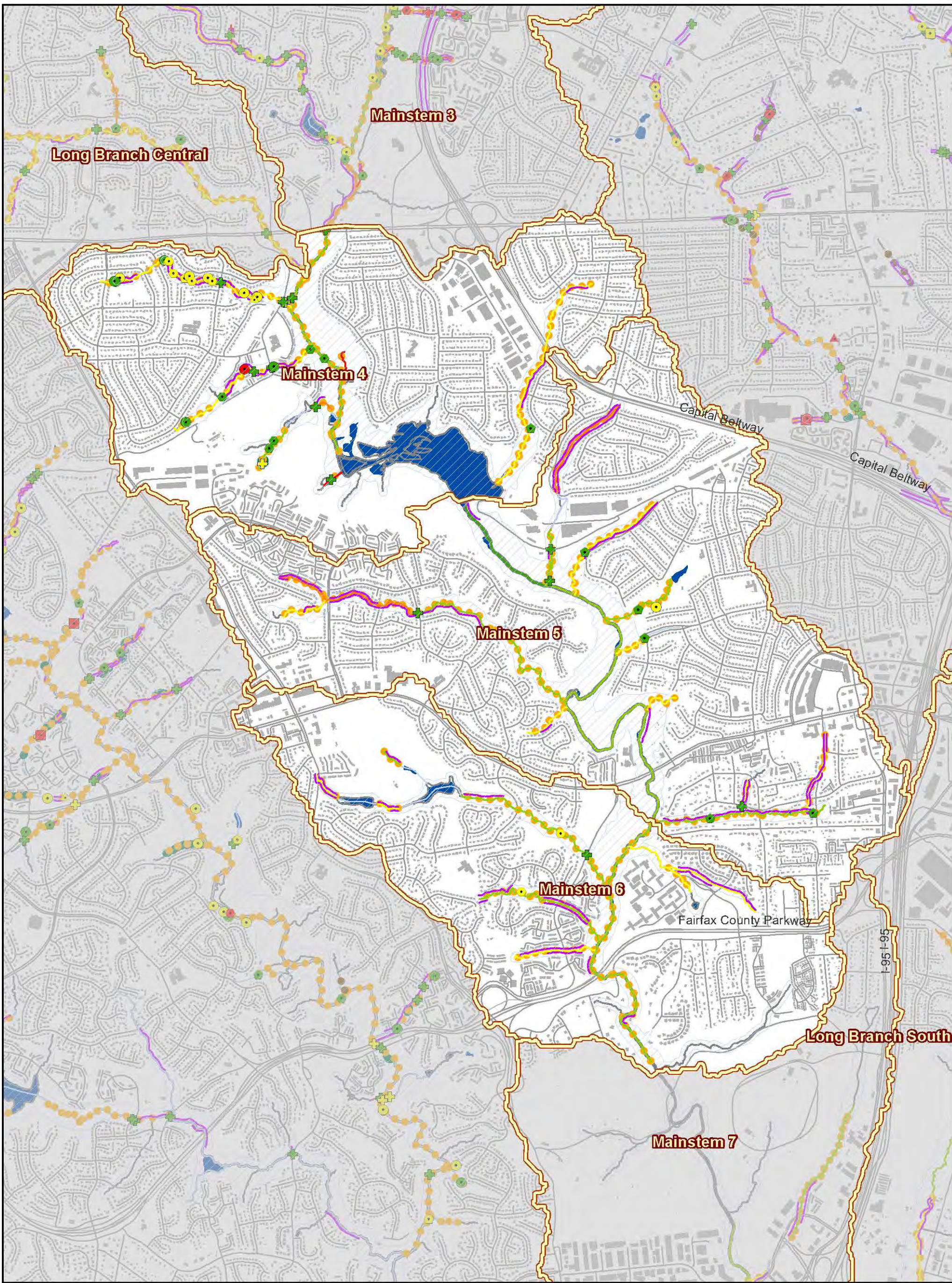

Land Use Map
Mainstem 4




0 0.25 0.5 Miles

- | | |
|-----------------------|---|
| WMA Boundary | Subarea |
| 303d Listed Streams | Quantity and Quality |
| Stormnet Facilities | Quantity |
| Stormnet Arcs | MSMD Flooding/Drainage Complaints |
| Parcels | STMDRN; SWM/BMP |
| Regional Ponds | Public Identified Problem Areas 2003 - 2006 |
| Constructed | |
| Planned | |

Map 2-26
**Stormwater
 Infrastructure
 Map**
 Mainstem 4
 Mainstem 5
 Mainstem 6

1742



0 0.25 0.5 Miles

- Obstruction Impact**
- Minor to Moderate
 - Moderate to Severe
 - Severe to Extreme
- Dump Site Impact**
- ★ Minor to Moderate
 - ★ Moderate to Severe
 - ★ Severe to Extreme
- Habitat Rating**
- Excellent
 - Good
 - Fair
 - Poor
 - Very Poor
 - Unassessed

- Head Cut Height**
- ▲ 0.5' - 1.0'
 - ▲ 1' - 2'
 - ▲ >2'
- Pipe Impact**
- Minor to Moderate
 - Moderate to Severe
 - Severe to Extreme

- Ditch Impact**
- Minor to Moderate
 - Moderate to Severe
 - Severe to Extreme
- Utility Impact**
- ◆ Minor to Moderate
 - ◆ Moderate to Severe
 - ◆ Severe to Extreme
- CEM Category**
- CEM 2 - Incising
 - CEM 3 - Widening

- Crossing Impact**
- ✚ Minor to Moderate
 - ✚ Moderate to Severe
 - ✚ Severe to Extreme
- ▭ WMA Boundary
 - ▭ Resource Protection Area (RPA)
 - Deficient Buffer
 - Erosion
 - Lakes and Ponds

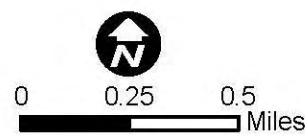
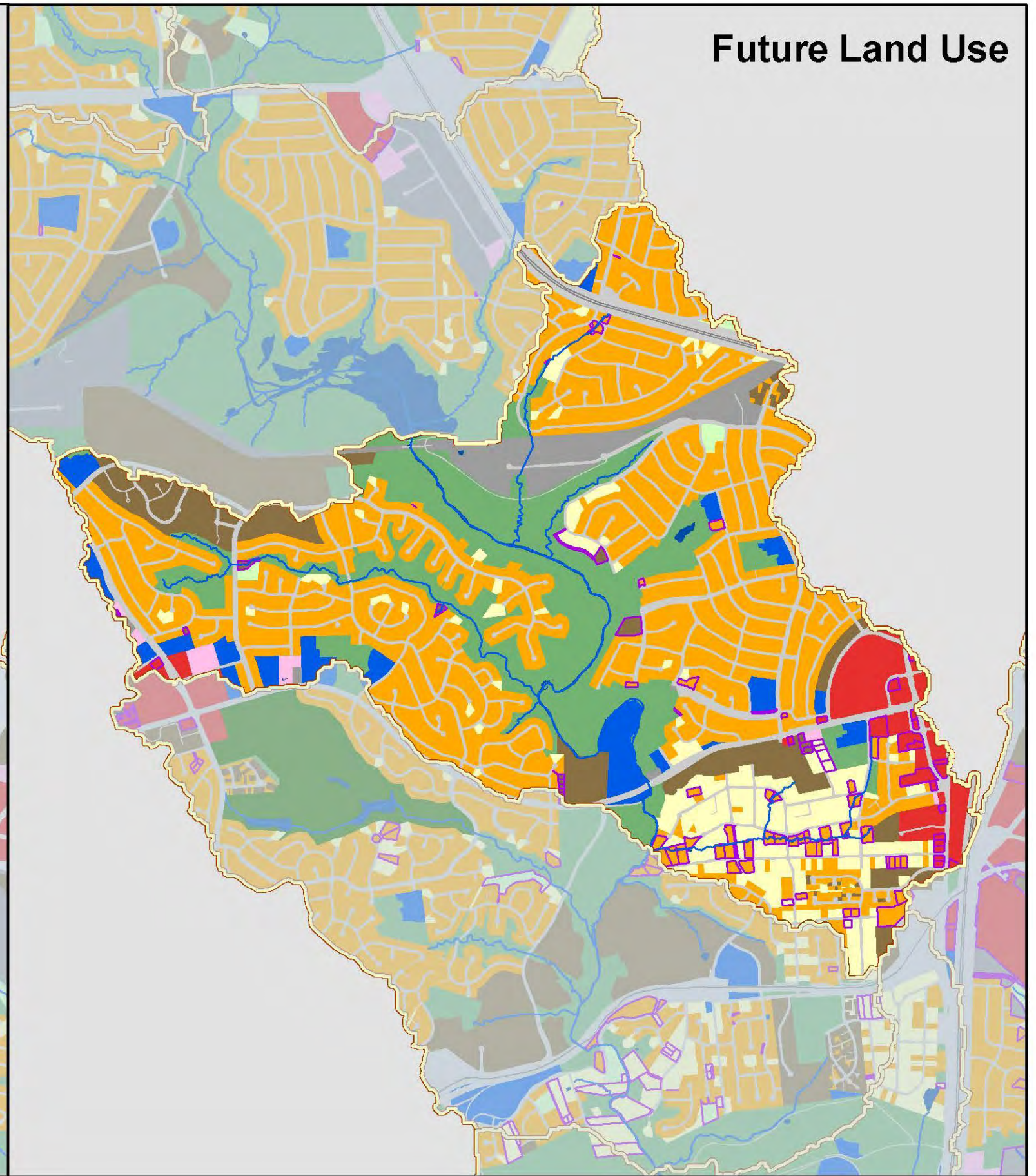
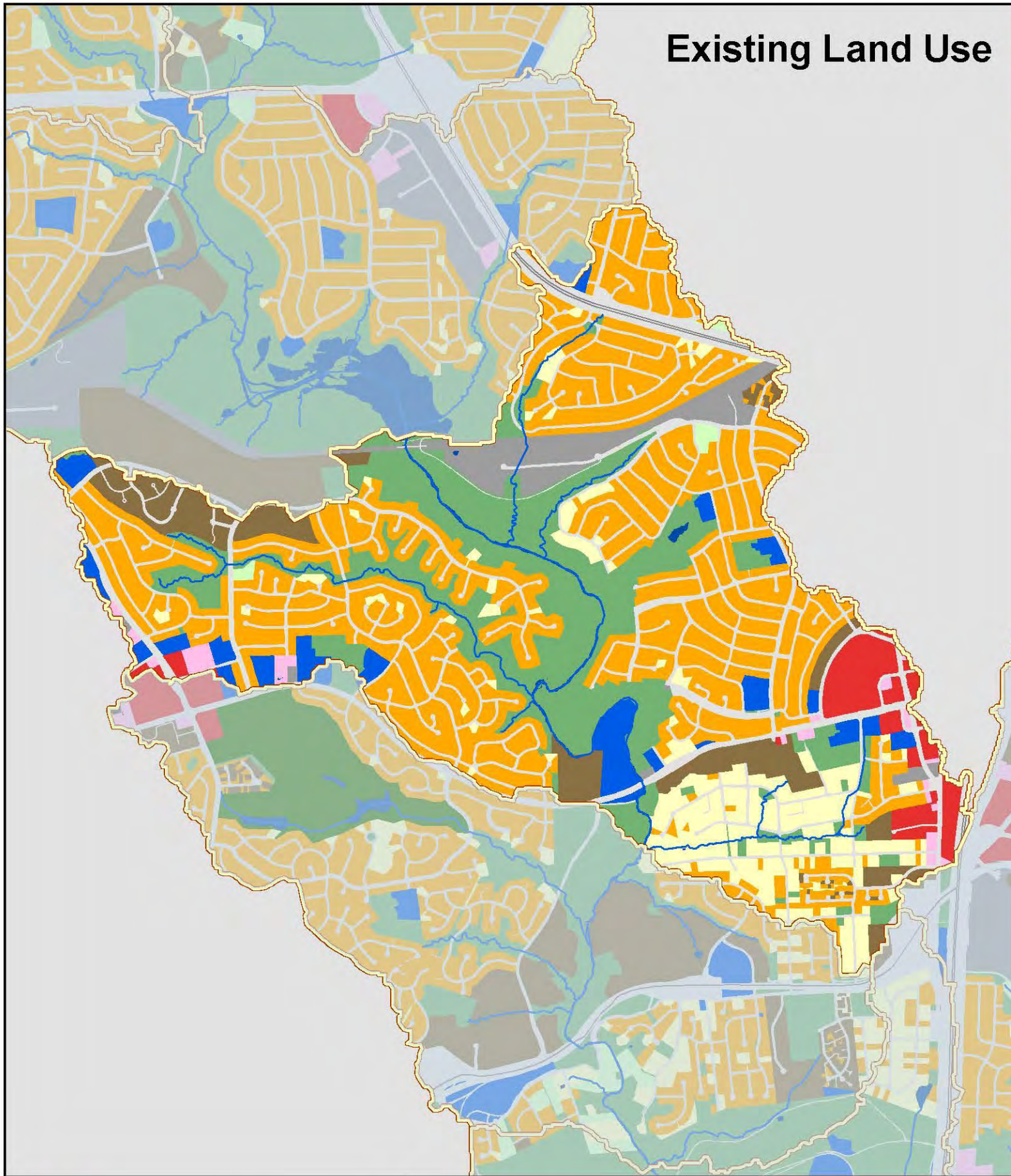
Map 2-27

Stream Condition Map

Mainstem 4
Mainstem 5
Mainstem 6

Existing Land Use

Future Land Use



Land Use

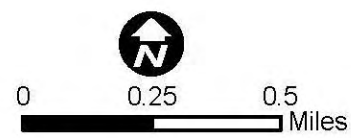
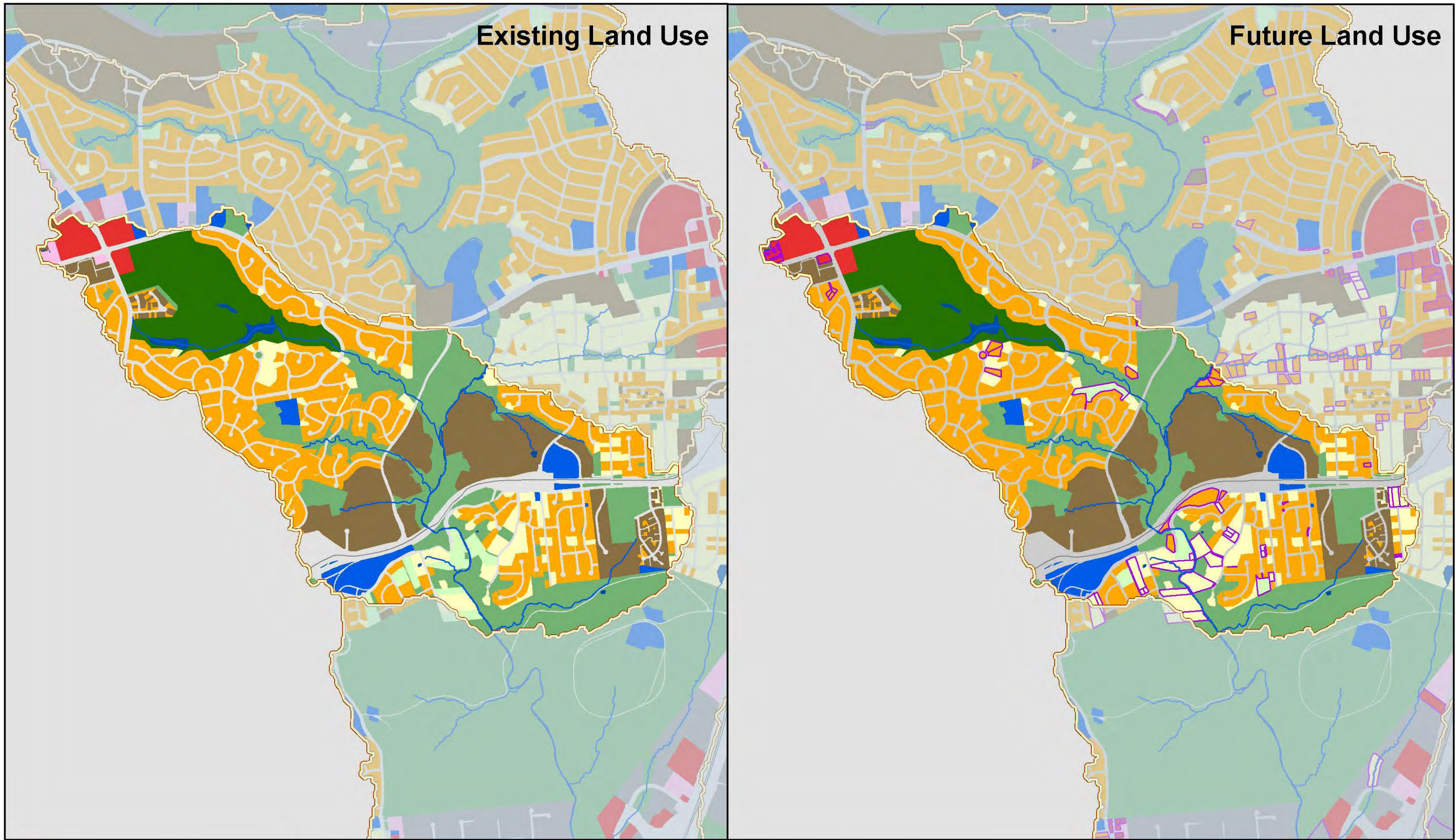
- | | | | | |
|--------------------------|---------------------------|----------------------------|----------------|--------------------|
| Estate Residential | High Intensity Commercial | Low Density Residential | Open Space | WMA Boundary |
| Golf Course | Industrial | Low Intensity Commercial | Transportation | Change in Land Use |
| High Density Residential | Institutional | Medium Density Residential | Water | |

Map 2-28

Land Use Map
Mainstem 5

Existing Land Use

Future Land Use



Land Use

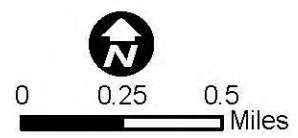
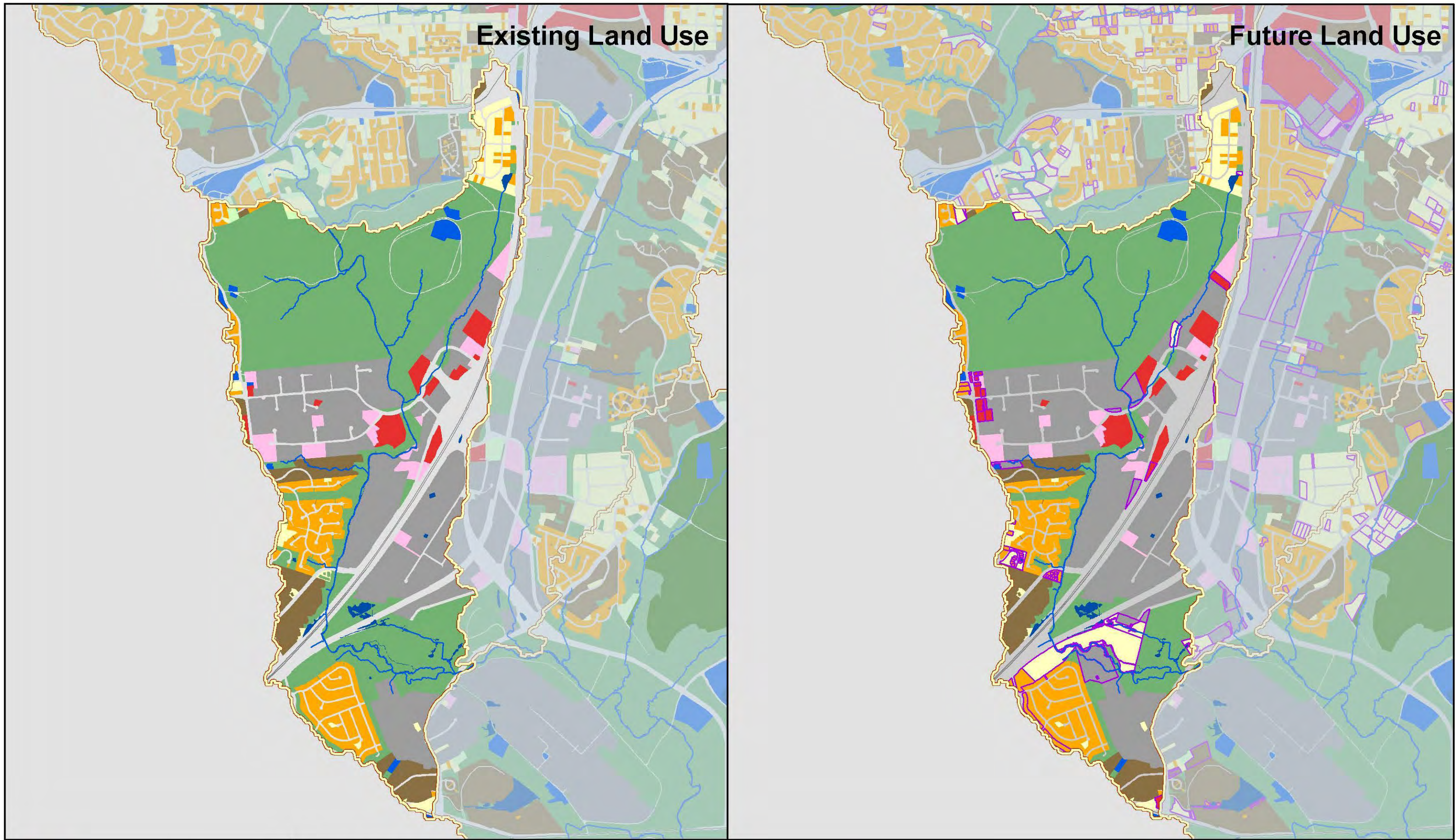
- | | | | | |
|--------------------------|---------------------------|----------------------------|----------------|--------------------|
| Estate Residential | High Intensity Commercial | Low Density Residential | Open Space | WMA Boundary |
| Golf Course | Industrial | Low Intensity Commercial | Transportation | Change in Land Use |
| High Density Residential | Institutional | Medium Density Residential | Water | |

Map 2-29

Land Use Map
Mainstem 6

Existing Land Use

Future Land Use



Land Use

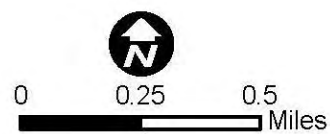
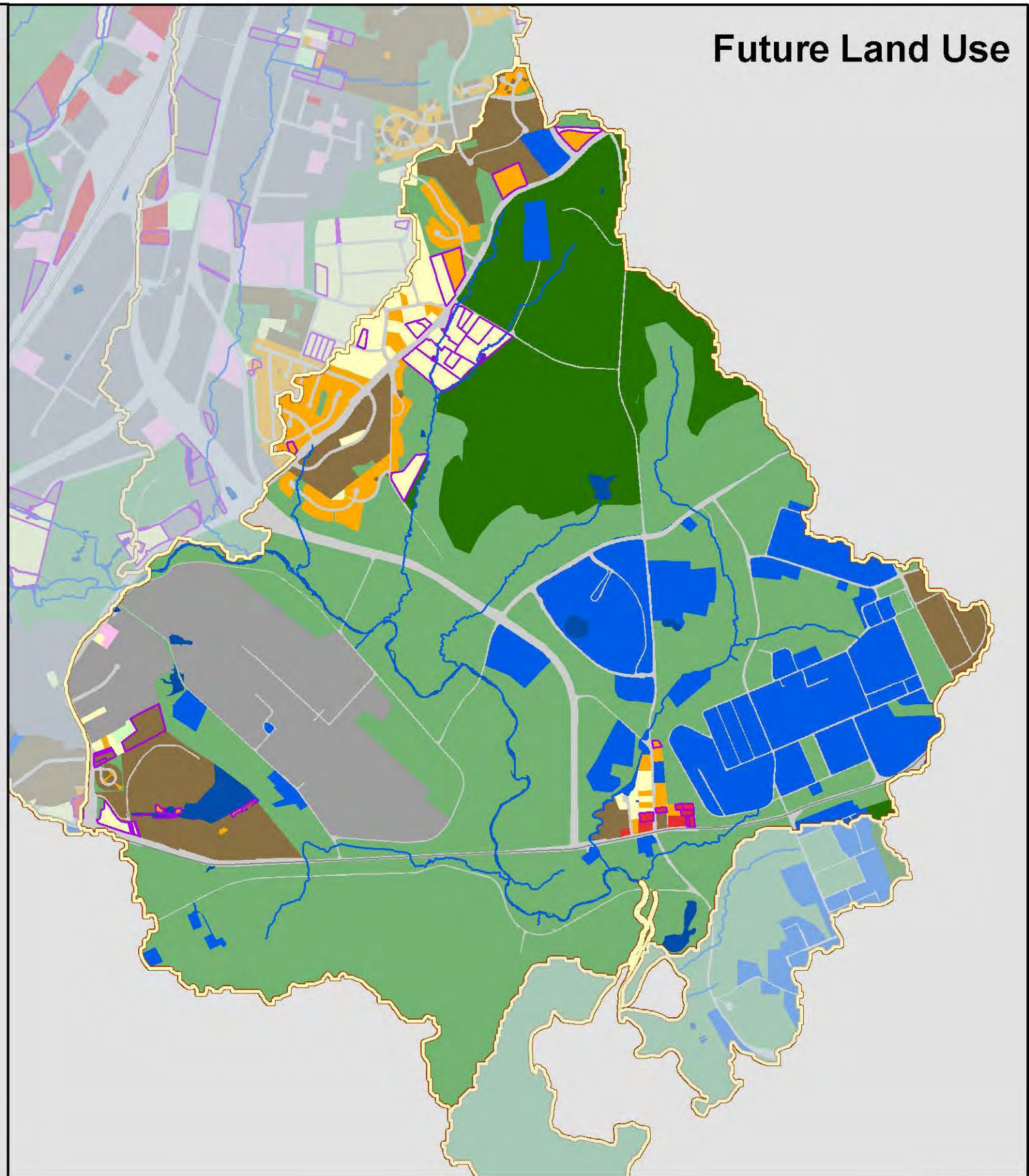
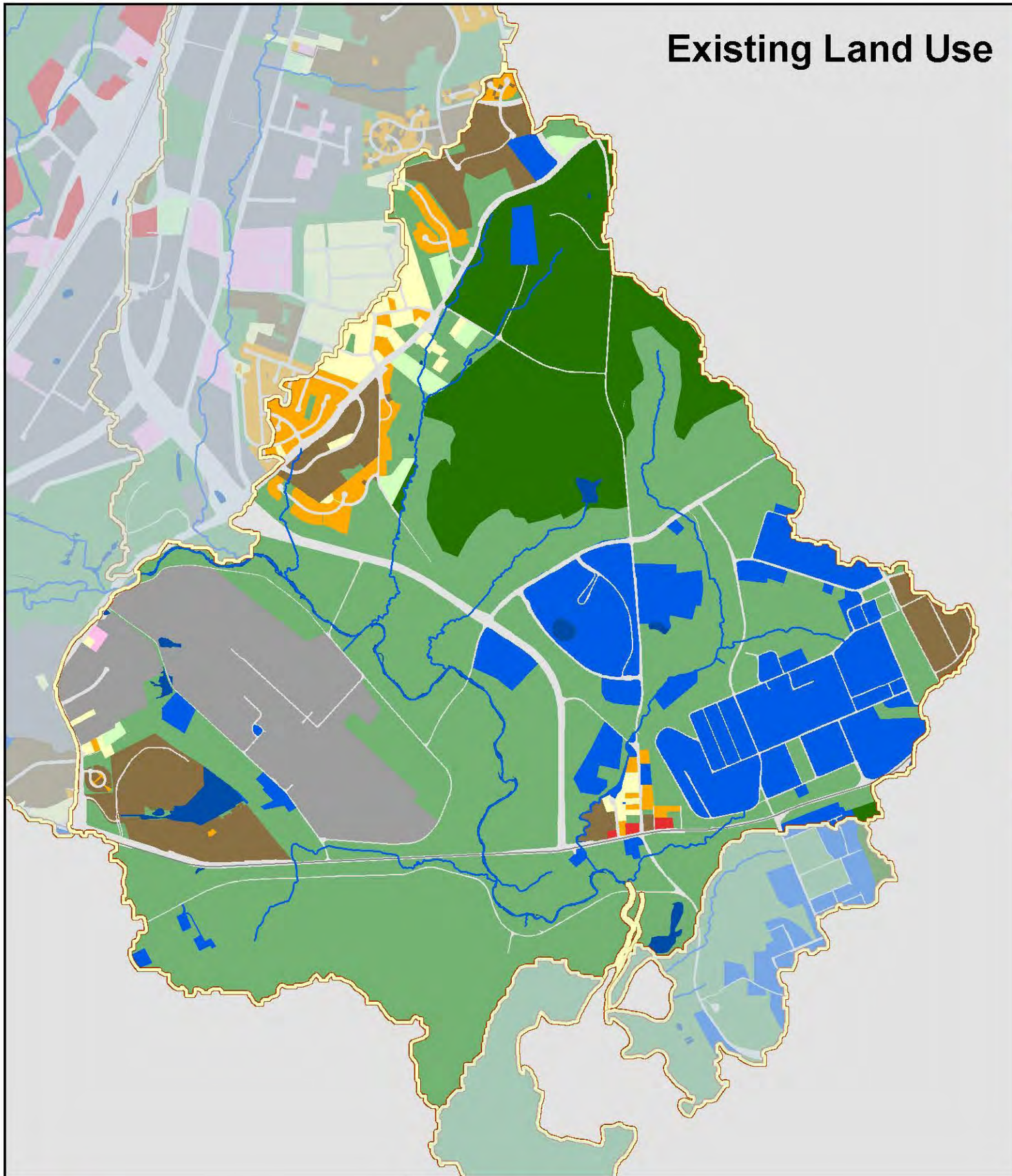
- | | | | |
|--------------------------|---------------------------|----------------------------|--------------------|
| Estate Residential | High Intensity Commercial | Low Density Residential | Open Space |
| Golf Course | Industrial | Low Intensity Commercial | Transportation |
| High Density Residential | Institutional | Medium Density Residential | Water |
| | | | WMA Boundary |
| | | | Change in Land Use |

Map 2-30

Land Use Map
Mainstem 7

Existing Land Use

Future Land Use

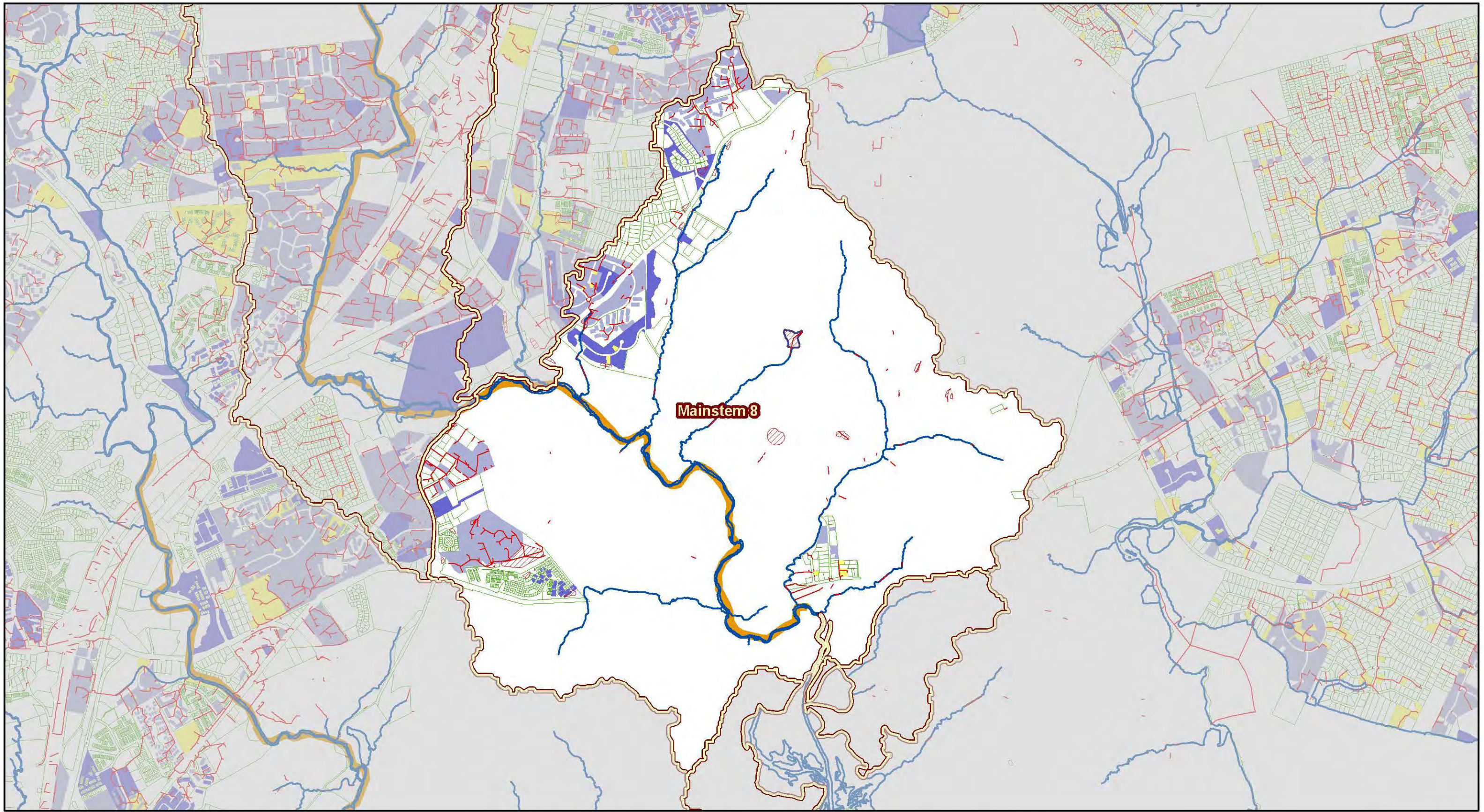


Land Use

- | | | | | |
|--------------------------|---------------------------|----------------------------|----------------|--------------------|
| Estate Residential | High Intensity Commercial | Low Density Residential | Open Space | WMA Boundary |
| Golf Course | Industrial | Low Intensity Commercial | Transportation | Change in Land Use |
| High Density Residential | Institutional | Medium Density Residential | Water | |

Map 2-31

Land Use Map
Mainstem 8



Mainstem 8



0 0.25 0.5 Miles

- | | | | |
|---------------------|-----------------------|----------------------|---|
| WMA Boundary | Regional Ponds | Subarea | MSMD Flooding/Drainage Complaints |
| 303d Listed Streams | Constructed | Quantity and Quality | STMDRN; SWM/BMP |
| Stormnet Facilities | Planned | Quantity | Public Identified Problem Areas 2003 - 2006 |
| Stormnet Arcs | | | |
| Parcels | | | |

Map 2-32

Stormwater Infrastructure Map

Mainstem 8