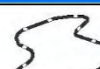


0 250 500 1,000  
Feet  
Prepared for Fairfax County by Woolpert LLP

 Subwatershed Boundary

 Buildings

 Roads

 Water

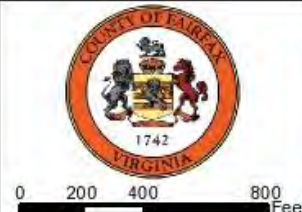
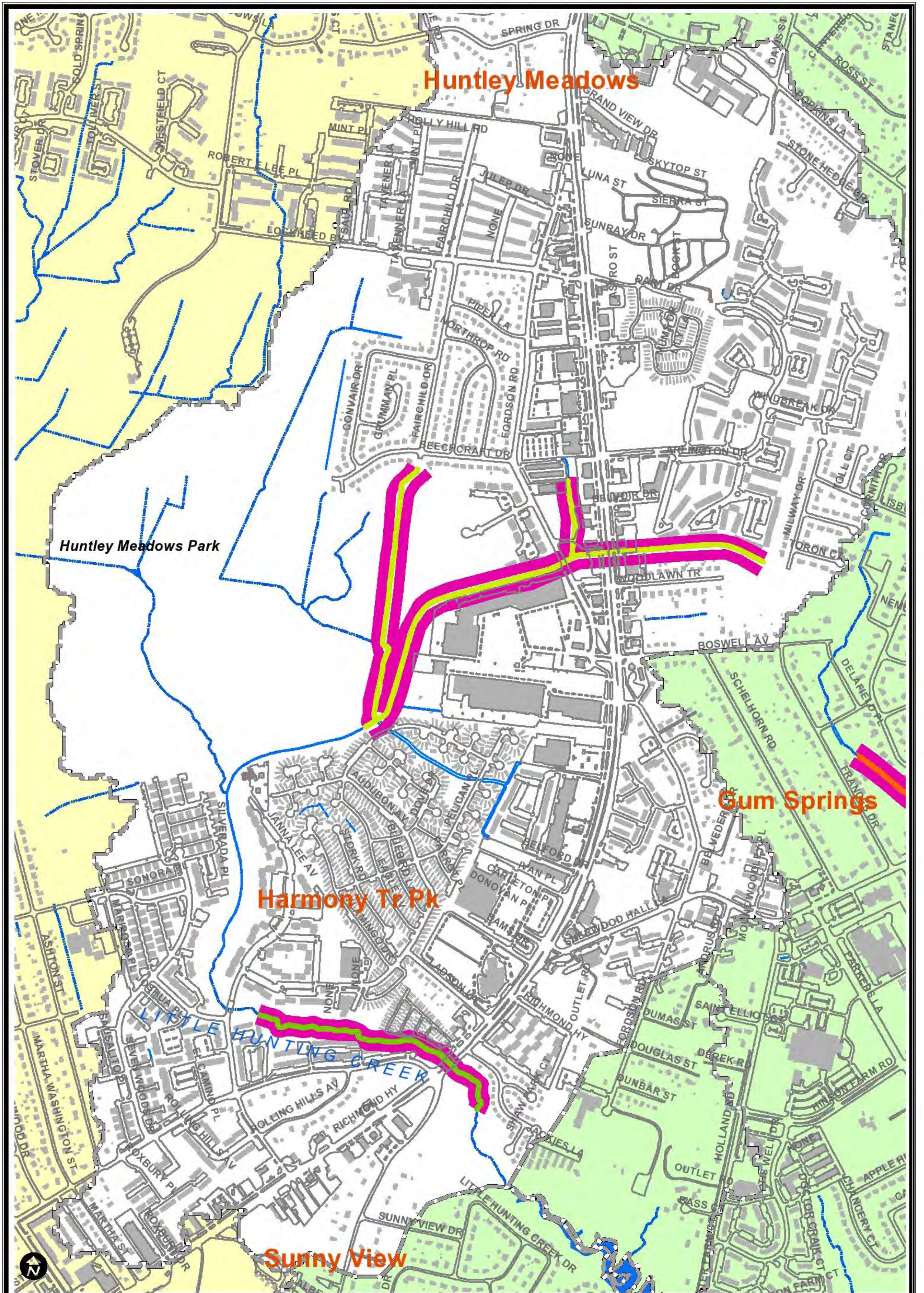
 Creeks/Streams

 5 ft Contours

 10 Year Future  
Proposed Floodplain

**Map 4.5**  
**Little Hunting Creek Watershed**  
**10 Year Future**  
**Proposed Floodplain**





- Subwatershed Boundary
- Roads
- Buildings
- Paved Ditch
- Creeks/River
- Water

- Modifications to Stream Channel**
- Placement of In-stream Habitat Structures
  - Placement of In-stream Habitat Structures & Channel Reconfiguration
  - Placement of In-stream Habitat Structures, Channel Reconfiguration & Floodplain Creation

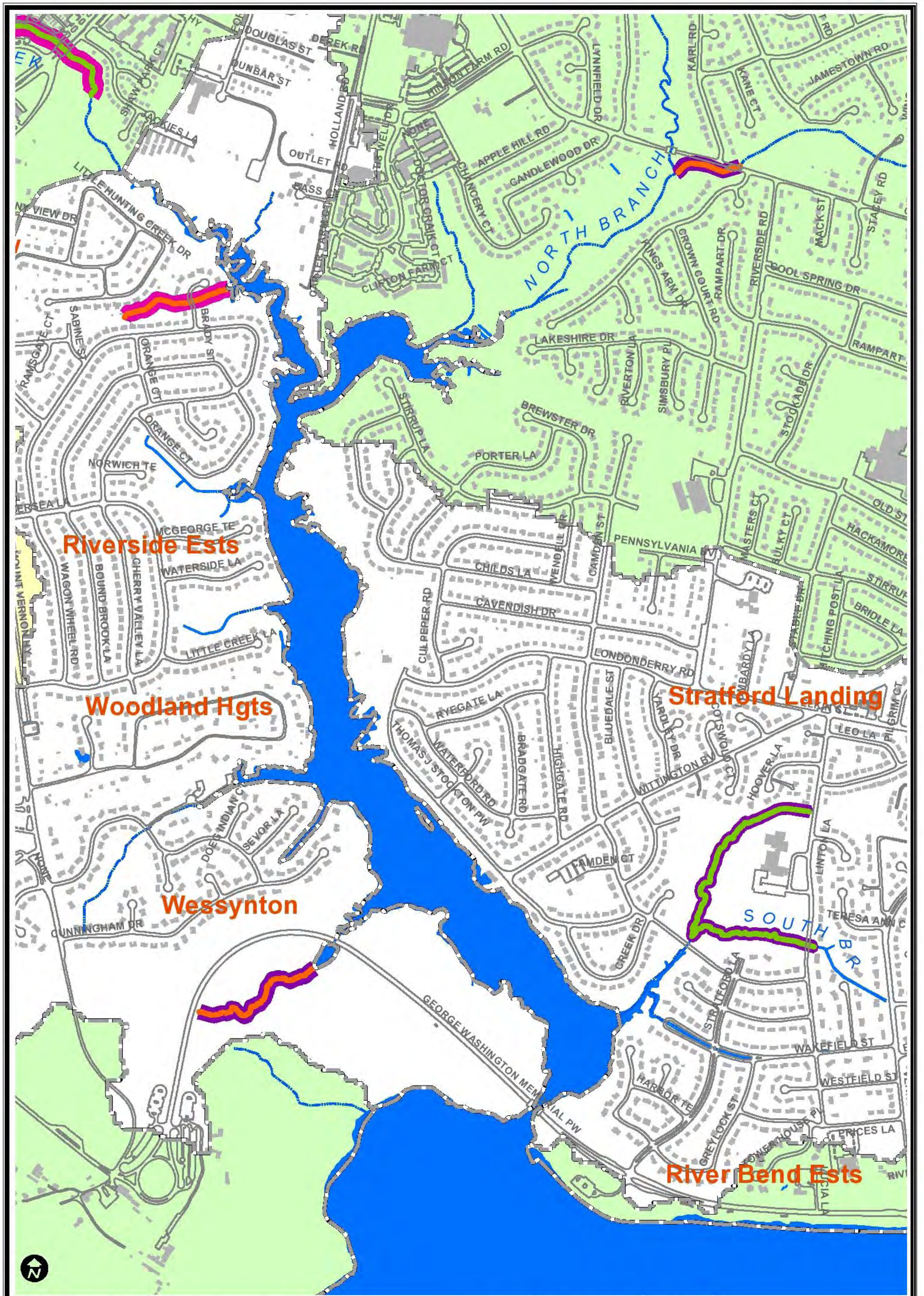
- Restoration of the Riparian Corridor**
- Placement of In-stream Habitat Structures, Channel Reconfiguration, Floodplain Creation, & Bioengineering of Stream Banks
  - Placement of In-stream Habitat Structures, Channel Reconfiguration & Bioengineering of Stream Banks

- Removal of Invasive & Vegetation Planting
- Removal of Invasive, Vegetation Planting, & Removal of Unstable Trees



**Map 4.6**  
**Little Hunting Creek Watershed**  
**Stream & Riparian Restoration**  
**North Little Hunting Creek**





- Subwatershed Boundary
- Roads
- Buildings
- Paved Ditch
- Creeks/River
- Water

- Modifications to Stream Channel**
- Placement of In-stream Habitat Structures
  - Placement of In-stream Habitat Structures & Channel Reconfiguration
  - Placement of In-stream Habitat Structures, Channel Reconfiguration & Floodplain Creation

- Restoration of the Riparian Corridor**
- Placement of In-stream Habitat Structures, Channel Reconfiguration, Floodplain Creation, & Bioengineering of Stream Banks
  - Placement of In-stream Habitat Structures, Channel Reconfiguration & Bioengineering of Stream Banks

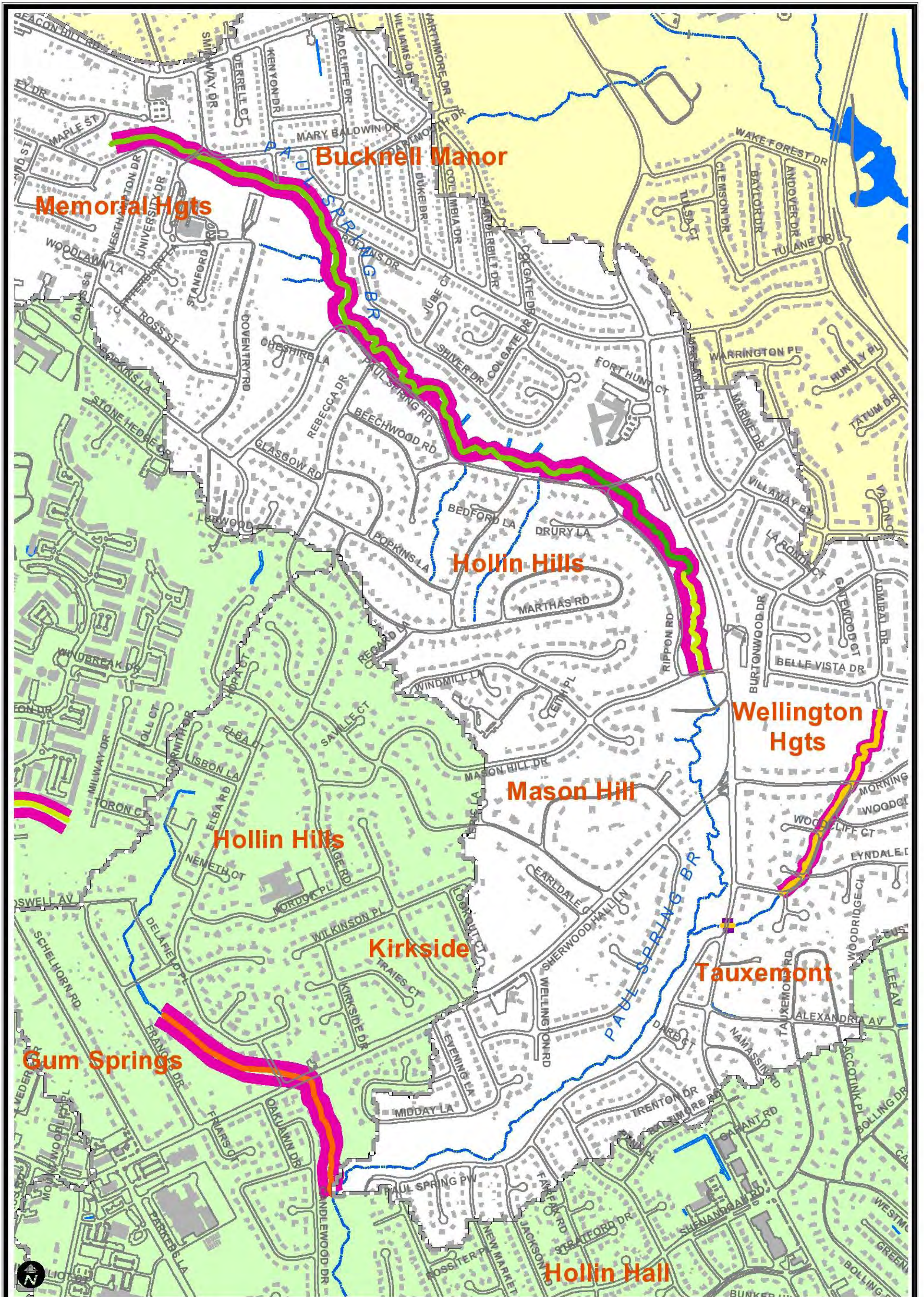
- Removal of Invasive & Vegetation Planting
- Removal of Invasive, Vegetation Planting, & Removal of Unstable Trees



**Map 4.7**  
**Little Hunting Creek Watershed**  
**Stream & Riparian Restoration**  
**South Little Hunting Creek**

0 200 400 800 Feet





- Subwatershed Boundary
- Roads
- Buildings
- Paved Ditch
- Creeks/River
- Water

- Modifications to Stream Channel**
- Placement of In-stream Habitat Structures
  - Placement of In-stream Habitat Structures & Channel Reconfiguration
  - Placement of In-stream Habitat Structures, Channel Reconfiguration & Floodplain Creation

- Placement of In-stream Habitat Structures, Channel Reconfiguration, Floodplain Creation, & Bioengineering of Stream Banks
- Placement of In-stream Habitat Structures, Channel Reconfiguration & Bioengineering of Stream Banks

- Restoration of the Riparian Corridor**
- Removal of Invasive & Vegetation Planting
  - Removal of Invasive, Vegetation Planting, & Removal of Unstable Trees



**Map 4.8**  
**Little Hunting Creek Watershed**  
**Stream & Riparian Restoration**  
**Paul Spring Branch**