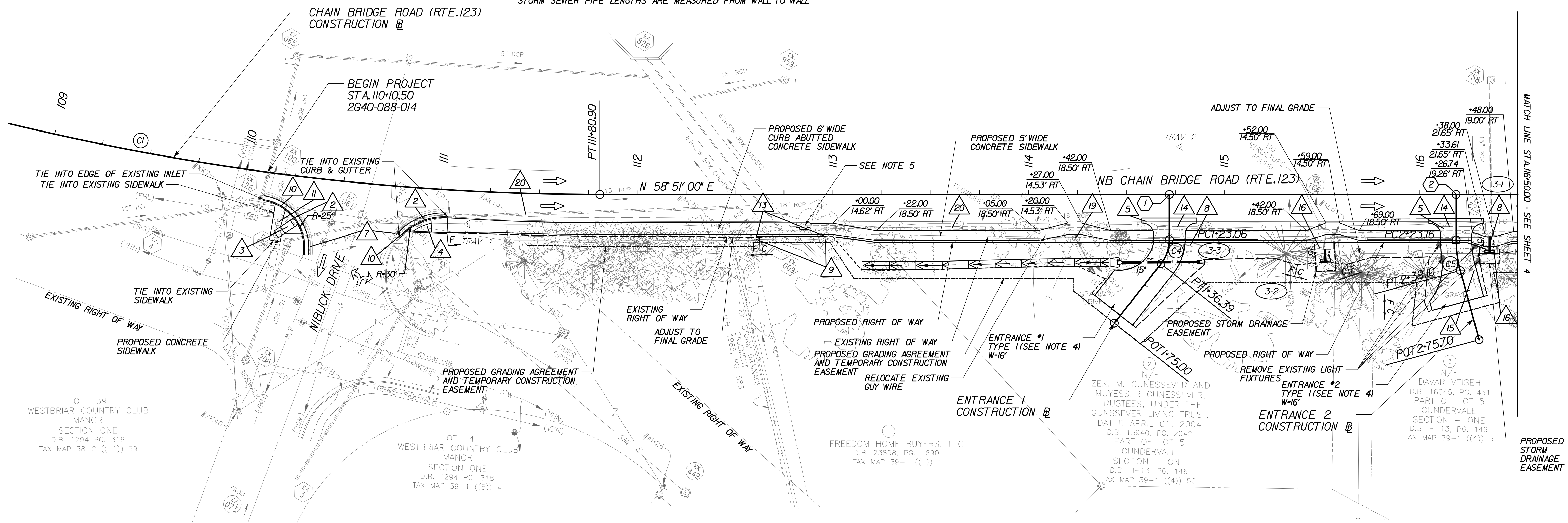


PROJECT MANAGER JIM BEALL, P.E. (703) 877-5673
 SURVEYED BY DATE FAIRFAX COUNTY (09-17-2015)
 DESIGN BY WHITMAN, REQUARDT & ASSOCIATES, LLP (703) 293-9717
 SUBSURFACE UTILITY BY DATE ACCUMARK, INC. (10-28-2015)

DRAINAGE DESCRIPTIONS

- 3-1 1-ST'D EW-15" REQ'D
INV.(IN)-384.25
- 3-1 EX822 8'-15" STORM SEWER PIPE REQ'D.(2' COVER)
INV.(IN)-384.25, INV.(OUT)-384.15
- EX822 MODIFY EXISTING STRUCTURE TO ACCEPT 15" PIPE
- 3-2 1-ST'D EW-15" REQ'D
INV.(IN)-381.36
- 3-2 EX6A EX. PIPE TO BE EXTENDED WITH 5' - 15" CONC. PIPE REQ'D.
TOTAL 15' - 15" STORM SEWER PIPE (2' COVER)
INV.(IN)-381.36, INV.(OUT)-381.30
- 3-3 40'-15" PIPE REQ'D.(1' COVER)
INV.(IN)-381.8 INV.(OUT)-381.50
2 ST'D ES-1 REQ'D (15")
3 TONS EC-CLASS 1 REQ'D

STORM SEWER PIPE LENGTHS ARE MEASURED FROM WALL TO WALL



LOT 39
WESTBRIAR COUNTRY CLUB
MANOR
SECTION ONE
D.B. 1294 PG. 318
TAX MAP 38-2 ((11)) 39

LOT 4
WESTBRIAR COUNTRY CLUB
MANOR
SECTION ONE
D.B. 1294 PG. 318
TAX MAP 39-1 ((5)) 4

ZEKI M. GUNESSEVER AND
MUYESSER GUNESSEVER,
TRUSTEES, UNDER THE
GUNSEVER LIVING TRUST,
DATED APRIL 01, 2004
D.B. 15940, PG. 2042
PART OF LOT 5
GUNDERVALE
SECTION - ONE
D.B. H-13, PG. 146
TAX MAP 39-1 ((4)) 5C

FREEDOM HOME BUYERS, LLC
D.B. 23898, PG. 1690
TAX MAP 39-1 ((1)) 1

WRA
 Whitman, Requardt & Associates, LLP
 3701 Pender Drive, Suite 450, Fairfax, Virginia 22030

PRE-FINAL SUBMISSION
 THESE PLANS ARE UNFINISHED
 AND UNAPPROVED AND ARE NOT
 TO BE USED FOR ANY TYPE
 OF CONSTRUCTION OR THE
 ACQUISITION OF RIGHT OF WAY.

- LEGEND**
- 1 ST'D VDOT CG-6 REQUIRED
 - 2 ST'D VDOT RADIAL CG-6 REQUIRED
 - 3 ST'D VDOT CG-12 TYPE A REQUIRED
 - 4 ST'D VDOT CG-12 TYPE B REQUIRED
 - 5 ST'D VDOT CG-9D REQUIRED
 - 6 REMOVE & RESET EXISTING FENCE ALONG PROPOSED RIGHT OF WAY LINE
 - 7 FULL DEPTH SAW CUT
 - 8 REMOVE EXISTING PIPE
 - 9 REMOVE EXISTING HANDRAIL
 - 10 REMOVE EXISTING CURB & GUTTER
 - 11 REMOVE EXISTING SIDEWALK
 - 12 ST'D VDOT CG-2 REQUIRED
 - 13 ST'D VDOT HR-1 TYPE III REQUIRED STA 112+61 TO STA 112+96
 - 14 REMOVE EXISTING ENTRANCE GUTTER
 - 15 REMOVE AND RESET EXISTING GATE
 - 16 REMOVE DRAINAGE STRUCTURE
 - 17 VDOT MODIFIED CG-12 MEDIAN REQUIRED
 - 18 REMOVE EXISTING WALL
 - 19 GRADE AROUND EXISTING UTILITY POLE
 - 20 EXISTING PIPE TO BE CLEANED OUT

Point Table

Point #	Description	Northing	Easting	Elevation
1	TRAV 1	7017197.80	11838629.76	385.58
2	TRAV 2	7017420.17	11838921.29	385.44

- NOTES:**
- 1) PROPOSED SIDEWALK SHALL DRAIN TOWARDS THE ROADWAY AT 2% UNLESS OTHERWISE NOTED
 - 2) GRADE AROUND SIDEWALK TO ENSURE POSITIVE DRAINAGE (2% MAX, 3% PREFERRED).
 - 3) CONTRACTOR RESPONSIBLE TO PROTECT FROM HARM OR REPLACE UNDER LICENSED LAND SURVEYOR ALL PROPERTY MONUMENTATION DISTURBED BY CONSTRUCTION.
 - 4) ALL PRIVATE ENTRANCES SHALL BE TYPE III TO THE RIGHT OF WAY. FOR EXISTING GRAVEL ENTRANCES, ENTRANCES TO BE TYPE I BEYOND RIGHT OF WAY TO TIE IN. FOR EXISTING ASPHALT ENTRANCES, ENTIRE ENTRANCE TO BE TYPE III. (SEE SHEET 2B)
 - 5) CONTRACTOR SHALL TIE SIDEWALK INTO EXISTING STORM STRUCTURE TO ENSURE LEVEL WALKING SURFACE.
 - 6) ALL STORM SEWER PIPES SHALL BE CONCRETE, UNLESS OTHERWISE NOTED. CONCRETE PIPES SHALL MEET VDOT ROAD AND BRIDGE SPECIFICATIONS.

- 1 Sta. 114+71.98 CHAIN BRIDGE ROAD @
Sta. 1+00.00 ENTRANCE 1 @
Δ = 90° 00' 00"
- 2 Sta. 116+18.57 CHAIN BRIDGE ROAD @
Sta. 2+00.00 ENTRANCE 2 @
Δ = 90° 00' 00"

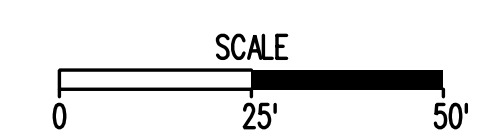
- C1 Curve RTE123-1
PI = 109+59.83
DELTA = 20° 04' 37.60" (LT)
D = 4' 29' 38"
T = 225.70'
L = 446.77'
R = 1275.00'
PC = 107+34.13
PT = 111+80.90
- C4 Curve ENTRANCE-1
PI = 129.98
DELTA = 38° 12' 35.42" (RT)
D = 286' 28' 44"
T = 69.3'
L = 13.34'
R = 20.00'
PC = 123.06
PT = 136.39
- C5 Curve ENTRANCE-2-1
PI = 231.8
DELTA = 15° 12' 50.80" (LT)
D = 95' 29' 35"
T = 8.0'
L = 15.93'
R = 60.00'
PC = 223.16
PT = 239.10

ENTRANCE #1 CONSTRUCTION BASELINE

POT 1+00.00 TO PC 1+23.06	S 31° 09' 00" E
PT 1+36.39 TO POT 1+75.00	S 7° 03' 35" W

ENTRANCE #2 CONSTRUCTION BASELINE

POT 2+00.00 TO PC 2+23.16	S 31° 09' 00" E
PT 2+39.10 TO POT 2+75.70	S 46° 21' 51" E



REFERENCES
 (PROFILES, DETAIL & DRAINAGE DESCRIPTION SHEETS, ETC.)

Staking Detail Sheet	2C(1)
Storm Sewer Profile	2K
Route 123 Profile	3A
Erosion & Sediment Control Plans	3B
Entrance Profiles	9(1)

EMERGENCY POLICE - FIRE - RESCUE 911
 FAIRFAX COUNTY, VIRGINIA
 DEPARTMENT OF PUBLIC WORKS AND ENVIRONMENTAL SERVICES-UTILITIES DESIGN & CONSTRUCTION DIVISION
 12000 GOVERNMENT CENTER PARKWAY, SUITE 463 FAIRFAX, VA., 22035-0052

OFFICE OF CAPITAL FACILITIES
 703-324-5800

CHAIN BRIDGE ROAD WALKWAY
 FROM NIBLICK DRIVE TO HORSE SHOE DRIVE
 PLAN SHEET

PROJECT NO: 2640-088-014

SCALE 1"=25'	DESIGNED: JRT DRAFTED: LTW CHECKED: RBH	SHEET 3
-----------------	---	------------

FUND # 400-C40011