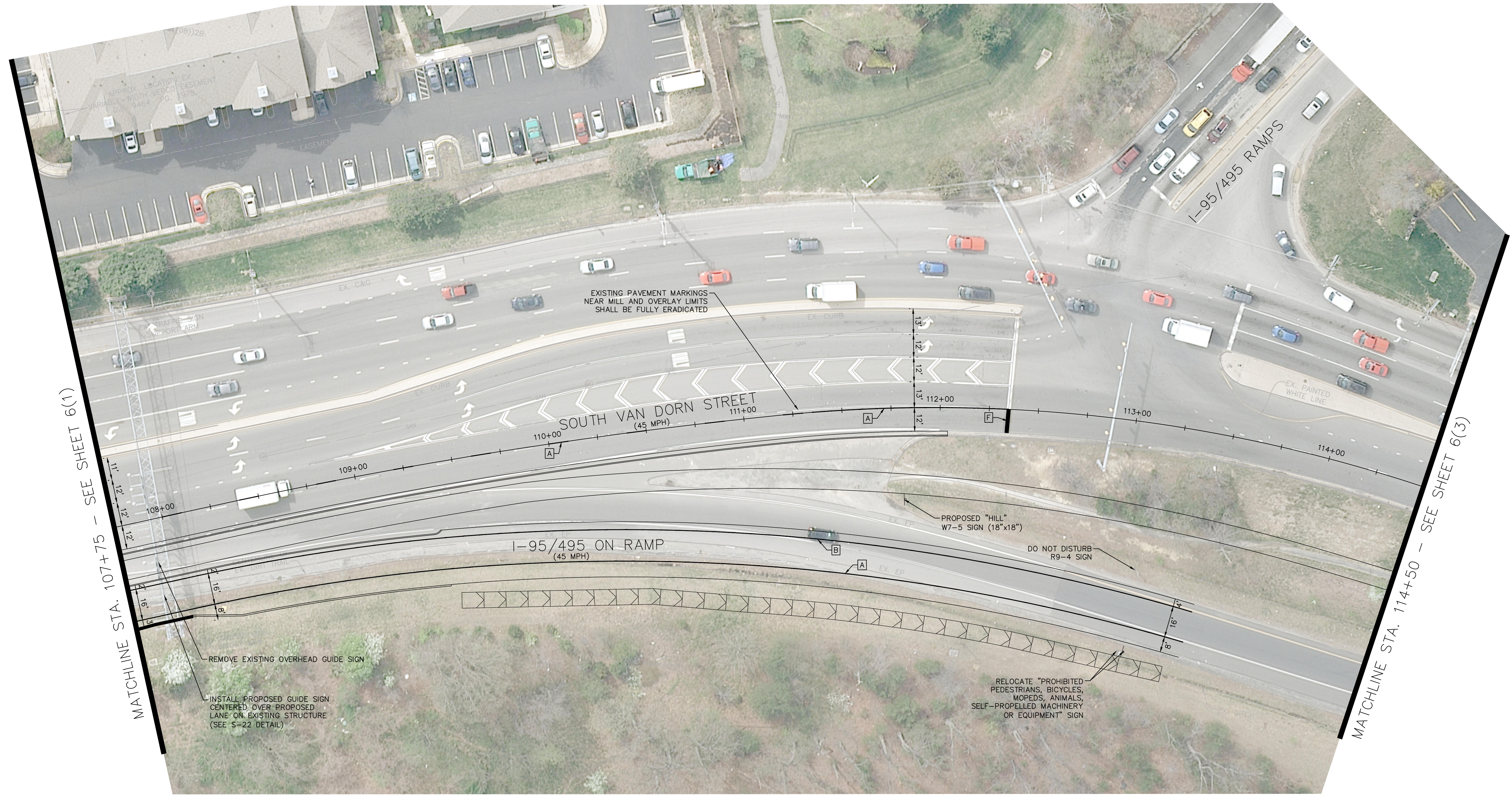


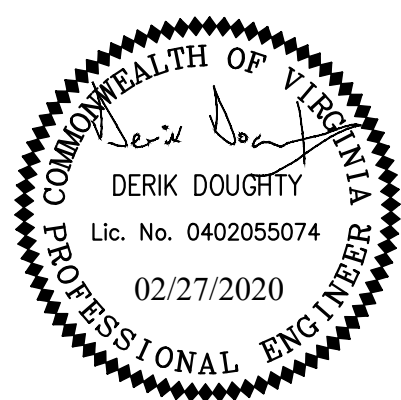
PROJECT MANAGER: LATESA TURNER, P.E.  
 SURVEYED BY, DATE: CHRISTOPHER CONSULTANTS, 3/27/2018  
 DESIGNED BY: KIMLEY-HORN AND ASSOCIATES, INC.  
 SUBSURFACE UTILITY BY, DATE: ACCUMARK, 10/23/2019

# SIGNING AND STRIPING PLAN



**LEGEND**

- A TYPE B, CLASS I, WHITE PAVEMENT LINE MARKING 4" WIDTH, SOLID OR 10' LINE WITH 30' SPACE
- B TYPE B, CLASS I, YELLOW PAVEMENT LINE MARKING 4" WIDTH, SOLID
- C TYPE B, CLASS I, WHITE PAVEMENT LINE MARKING 4" WIDTH, 3' LINE WITH 9' SPACE
- D TYPE B, CLASS I, WHITE PAVEMENT LINE MARKING 4" WIDTH, 2' LINE WITH 6' SPACE
- E TYPE B, CLASS I, WHITE PAVEMENT LINE MARKING 8" WIDTH, SOLID
- F TYPE B, CLASS I, WHITE PAVEMENT LINE MARKING 24" WIDTH, SOLID
- G TYPE B, CLASS I, WHITE PAVEMENT ARROW MARKING



GRAPHIC SCALE IN FEET  
 0 12.5 25 50

**Kimley»Horn**

KIMLEY-HORN AND ASSOCIATES, INC.  
 11400 Commerce Park Drive, Suite 400, Reston, VA 20191  
 Phone: 703-674-1300

|                                                                                                                                                         |                                                     |                                                                                               |  |
|---------------------------------------------------------------------------------------------------------------------------------------------------------|-----------------------------------------------------|-----------------------------------------------------------------------------------------------|--|
| EMERGENCY POLICE - FIRE - RESCUE 911                                                                                                                    |                                                     |                                                                                               |  |
| FAIRFAX COUNTY, VIRGINIA                                                                                                                                |                                                     |                                                                                               |  |
| DEPARTMENT OF PUBLIC WORKS AND ENVIRONMENTAL SERVICES PLANNING & DESIGN DIVISION<br>12000 GOVERNMENT CENTER PARKWAY, SUITE 449 FAIRFAX, VA., 22035-0052 |                                                     |                                                                                               |  |
| OFFICE OF CAPITAL FACILITIES<br>703-324-5800                                                                                                            |                                                     | SOUTH VAN DORN STREET<br>BIKE AND PEDESTRIAN ACCESS IMPROVEMENTS<br>SIGNING AND STRIPING PLAN |  |
| CONTRACT NO. CN                                                                                                                                         |                                                     | PROJECT NO. AA1400141-2016                                                                    |  |
| SCALE<br>SEE GRAPHIC<br>SCALE                                                                                                                           | DESIGNED BY: DD<br>DRAFTED BY: MW<br>CHECKED BY: MA | SHEET<br>6(2)                                                                                 |  |
| APPROVED BY THE TRANSPORTATION DESIGN DIVISION                                                                                                          |                                                     |                                                                                               |  |

Plotted By: Doughty, Derik. Sheet Set: South Van Dorn Street. Signing and Striping Plan. February 27, 2020 08:37:15pm. K:\NVA\_RD\WV\110213060\_South Van Dorn Street\CAD\PlanSheets\SIGNING AND STRIPING PLAN.dwg